

Farmer Helping Farmer

The objective of this project is to support farmers in drought affected areas such as the Heytesbury region by expanding access to domestic and stock water.

To achieve this, the project is seeking expression of interest from farmers who would be willing to provide access to their privately owned bores for the provision of water to other farmers during periods of water shortage.

This project will support landowners who wish to participate in this project by any of the following ways:

- Cover all costs associated with providing access to the water supply and the carrying out of any improvements to the water supply infrastructure.
- Prepare site access agreements that include conditions requested by the landowner to ensure safe access and the satisfaction of any bio-security requirements.
- Provision of other incentives such as infrastructure improvements, financial contributions to cover utility expenses etc...

Who should you contact if you have any questions regarding this project?

Contact Simon Ilsley from Southern Rural Water on 0447 506 997 or by email at simoni@srw.com.au.

What's next if you are interested in participating in this project?

Complete the Expression of Interest form on the following three pages.

What's happens after you submit the EOI form?

Southern Rural Water will contact you to arrange a site visit of your property.



3. Onsite access:

Are there any works required to facilitate the connection to your bore?

4. Offsite access:

If **off-site** access is preferred, what is the approximate distance to the road side?

Less than 50 metres

Between 50 and 100 metres

Greater than 100 metres

Is there an area on road verge that is:

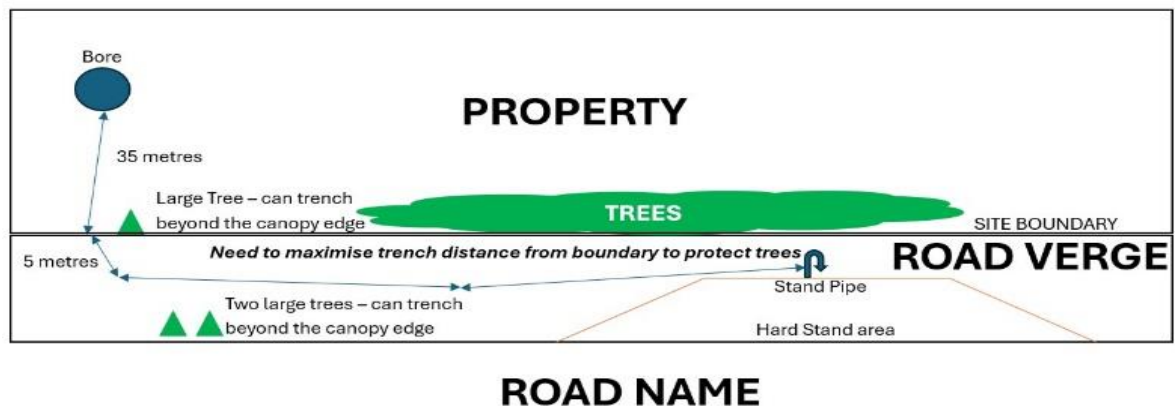
Sufficiently wide enough to park a water carting truck?	Yes	No
Clear of native vegetation?	Yes	No
Not obstructed by drainage infrastructure or power poles	Yes	No

5. Commitment

<p>This program is seeking a commitment from you that you will support other farmers on an ongoing-basis when there is a need for water to operate their farm during water shortage periods</p> <p>This commitment will be subject to the collection of water from your bore satisfying all requirements that you stipulate as a part of an agreement.</p>	Do you understand this commitment?
	Yes

6. Site plan

Please draw a site plan if it is easier to explain your site conditions.



Email this completed form to srw@srw.com.au or send via post to:

Southern Rural Water
PO Box 153
MAFFRA, Victoria, Australia, 3860