

# MCCC AGENDA

## Meeting no. 194

10.00am  
Tuesday 27 September 2022  
SRW Maffra

*We acknowledge the Gunaikurnai people, Traditional Owners of this land on which we meet and we pay our respects to their Elders past and present.*



**Southern  
Rural Water**

Managing Water. Serving Communities.



## Our Vision

Great value for customers and community through excellence in rural water management

### Trademark Behaviours

- Always Safe
- United
- Ambitious
- Results Driven
- Customer First
- Innovative
- Respectful

1		PROGRAM	PRESENTER
		OPENING	CHAIR
2		Welcome and apologies	CHAIR
3		Declaration of conflicts of interest	CHAIR
4		Confirmation of minutes	CHAIR
5		Business arising from previous meetings	CHAIR
		<u>FOR DISCUSSION</u>	
6		PRINCIPAL MATTERS	
	6.1	Chairperson's report	CHAIR
	6.2	Significant issues or actions	CHAIR
	6.3	Matters referred by the Board	BOARD MEMBER
	6.4	Guest Presentation - Place of Take Project	DELWP
	6.5	Water Supply update	GENERAL MANAGER SERVICE DELIVERY
	6.6	Central and Gippsland Region Sustainable Water Strategy	MANAGING DIRECTOR
	6.7	Price Submission update	MANAGING DIRECTOR
	6.8	Critical Assets presentation	MANAGER ASSET RELIABILITY
7		FOR NOTING	CHAIR
	7.1	Correspondence	
	7.2	Communications update	
	7.3	Feedback register	
8		GENERAL BUSINESS	ALL
9		Next meeting	
10		Close	

2. **WELCOME AND APOLOGIES; AGENDA LISTING**

3. **DECLARATION OF CONFLICTS OF INTEREST**

4. **CONFIRMATION OF MINUTES**

**RECOMMENDATION**

That the committee **approves** the minutes of the meeting held on **Tuesday 26 July 2022**.

**REPORT**

Draft minutes of the MCCC meeting held on Tuesday 26 July 2022, are included at 4.1.

## 4.1 CONFIRMATION OF MINUTES, MEETING 193

### MACALISTER CUSTOMER CONSULTATIVE COMMITTEE

#### MINUTES OF MEETING 193 Held 10.00am Tuesday 26 July 2022 SRW, Maffra

#### PRESENT

Mrs Raelene Hanratty, Chair  
Mr Norm Drew  
Ms Kate Lamb  
Mr Alan Clyne  
Mr Graeme Anderson, OAM, via MS Teams  
Mrs Jeannette Howie, via MS Teams  
Mr Brad White

#### SRW Representatives

Mr Cameron FitzGerald, Managing Director  
Mr Simon Wilkinson, Acting General Manager Service Delivery  
Mr Matthew Cook, Acting Manager Water Supply East  
Mr Craig Smith, Manager Strategy & Business Planning, via MS Teams  
Mrs Pamela Crawford, Customer Relations Officer

#### APOLOGIES

Ms Joanne Butterworth-Gray, SRW Board Chair  
Mr Benn Thexton, Deputy Chair  
Mr Steve Dwyer

## 2. WELCOME AND APOLOGIES; AGENDA LISTING

The Chair opened the meeting by acknowledging the traditional owners of the land and waters of the MID.

The Committee noted the apologies.

## 3. DECLARATION OF CONFLICTS OF INTEREST

Mr Alan Clyne declared an interest in the Newry pipeline project.

## 4. CONFIRMATION OF MINUTES

The committee **approved** the minutes of the meeting held on **Tuesday 24 May 2022**.

**Moved:** Mr G Anderson

**Seconded:** Mr A Clyne

## **5. BUSINESS ARISING FROM PREVIOUS MEETINGS**

Meeting	Agenda Item #	Action	Action Officer	Status
April	6	Mrs Crawford to co-ordinate the creation of a Conflict of Interest table for the agenda.	Crawford	Ongoing  Members to contact Mrs Crawford with any additional COI's.
April	6.6	<i>Mr Wilkinson to include a definition and map of the Thomson Macalister system in the MCCC workshop pack.</i>	Wilkinson	Complete

## **6. PRINCIPAL MATTERS**

### **6.1 CHAIRPERSON'S REPORT**

- The Chair provided a report which included:
  - A MID Modernisation PCG meeting update where it was identified that work was continuing on auditing the water savings from Phase 1B. This could see up to 10GL available in early 2023. Mrs Hanratty said the water, once audited, should be made available and advertised as soon as possible.
  - An update that the Pricing Submission subcommittee was to be held in the afternoon of the 26 July 2022.
  - The launch of the SRW website and some disappointment that the Committee did not get advised before it was launched.
  - Recognition of the resignation of Mr Hugh Christie. Mrs Hanratty said Mr Christie has been a great support for the MIA and MCCC. On behalf of the MCCC we wish him well.

### **6.2 SIGNIFICANT ISSUES OR ACTIONS**

- There are no significant current issues or actions.

### **6.3 MATTERS REFERRED BY THE BOARD**

- The current Pricing Submission status has been referred by the board for feedback. This is included as an item on the agenda.

### **6.4 WATER SUPPLY UPDATE**

- Mr Simon Wilkinson, Acting General Manager Service Delivery provided an update including:
  - End of season wrap up (report included with agenda).
    - Minimal water was used this season, with 2021-22 deliveries being the lowest recorded since the late 1950's.

- Approximately 626,000ML was released down the river through the season. This was a positive outcome for environmental freshes.
- Mrs Hanratty said that this information needs to be communicated to the public to dispel the rumour that farmers are causing the Blue Green Algae issues in the Gippsland Lakes.

### **6.5 SALINITY UPDATE**

- Mr Matt Cook, Acting Manager Water Supply East presented the Salinity Update, which was included with the agenda to the Committee.

The following was discussed:

- The 2021-22 season was wetter than average which has impacted the level of the water table in areas across the MIA.
- The operation and maintenance of the groundwater pumps are now managed through the Manager of Water Supply.
- The CMA have compiled salinity mapping for the MIA. The mapping illustrates salinity occurrence over a 3 year period.
- The Committee noted that salinity impacts will be felt on farms once conditions dry out.
- Mr Cook noted that AgVic was already preparing plans to manage this issue.
  - It was questioned who funds the replacement and monitoring of the infrastructure. Mr Cook said monitoring is funded through the CMA. Replacements need to go through the SRW capital planning process and funding sourced.

### **6.6 PRICING SUBMISSION - FINAL PRICE PROPOSALS**

- Mr Craig Smith, Manager Strategy and Business Planning, joined the meeting and presented the Pricing Submission final price proposals.
- The following was discussed:
  - Customer engagement has now been completed. SRW is now reporting back the findings to Customer Committees and Customer Reference Groups.
  - The tariff structure is currently being finalised. The intention is to deliver the draft submission to the Board at its August meeting, with the final proposal to be presented to the September Board meeting before submission with the ESC.
  - Mr Smith discussed customer feedback which included:
    - Reliable supply of water at a fair and reasonable price.
    - A 1% per annum productivity saving.
    - A commitment to maintain current staffing levels.
    - Meeting current obligations.
    - A capital program that focusses on compliance-based projects.
    - Indication that the investment SRW and federal governments are making on modernisation works is understood and support of the pricing proposal of a 1.5% year on year increase (plus CPI) that will be used to support completion of modernisation works.

- More efficient ways will be explored for delivering the Salinity Program. The consultation highlighted that education about the program is required.
- Customers have asked for more investment in the drainage program.
- There was support from the Committee for the proposals presented by Mr Smith. It was commented that SRW have done a good job at keeping the costs in hand. This is the first time in some years there has been an increase.

### **6.7 MODERNISATION UPDATE**

- Mr Cameron FitzGerald, Managing Director, led discussions.
  - A paper will be presented to the Board next week with a proposed pathway forward for phase 2 works.
  - The next step after going to the Board is to gain DELWP approval to communicate the pathway, which may take some time.
  - The Committee discussed co-contributions and the negotiation of final contracts. Mr Cook said that these discussions will take priority.
  - Mr FitzGerald said he greatly appreciates all the work Mr Cook has put into this project and his commitment to communicating with affected customers.

### **6.8 FEBRUARY WORKSHOP PACK – COMMENTS FROM COMMITTEE**

- Mr Wilkinson advised some feedback has been received and is happy to receive more over the coming week.
- The document will then be published and be made available on the SRW website.
- The Committee briefly discussed education in schools. Mr Wilkinson advised that education packs have been developed and will be circulated to schools. A copy will be sent with the minutes.

## **7.0 FOR NOTING**

### **7.1 CORRESPONDENCE**

- The Committee noted that there was no correspondence since the last meeting.

### **7.2 FEEDBACK REGISTER (RELEVANT TO MID)**

- The Committee noted that there was no feedback since the last meeting.

### **7.3 COMMUNICATIONS UPDATE**

- The Committee noted the Communications report.

## **8.0 GENERAL BUSINESS**

- The Chair referred to the conflict-of-interest table and invited members to declare other interests before opening the floor to General Business. No other interests were declared.



- Timing for election of Chair and Deputy Chair.
  - Mr Wilkinson sought feedback from the Committee on when to hold the election of Chair or Deputy Chair and it was agreed that it would be best to hold off until later in the year after recruitment of new members had occurred.
  - The Committee agreed to wait until recruitment had been finalised to hold the election.
  - The need for diversity within the Committee, from all areas of the MIA and industries, was discussed.
- The Committee discussed the new SRW website. The Committee are asked to provide any feedback through Mrs Crawford.

### **9.0 NEXT MEETING**

The next meeting No. 194 of the Macalister Customer Consultative Committee is scheduled for 10.00 am on Tuesday 27 September 2022.

Topics to be discussed include:

- Chairpersons report
- Annual financial report
- Manager Water Supply Update
- Environment water release strategy

<b>Meeting</b>	<b>Date</b>
MCCC 194	Tuesday, 27 <sup>th</sup> September 2022
MCCC 195	Tuesday, 25 <sup>th</sup> October 2022
MCCC 196	Tuesday, 13 <sup>th</sup> December 2022

### **10.0 MEETING CLOSE**

With there being no further business the meeting closed at 11.54am.

**CONFLICT OF INTEREST TABLE**

<b>Name of Committee member</b>	<b>Description of interest</b>	<b>Interested parties</b>	<b>Is the interest current?</b>
Kate Lamb	Beef grazing operation in Denison	Kate Lamb	Yes
Raelene Hanratty	Owens irrigation land at Upper Maffra West and Newry	Water Share holder	Yes
	SRW Project Control Group.	SRW and DELWP	Yes
	Deputy Chair RDA Gippsland	Federal & State Governments	Yes
	Deputy Chair RFCS Gippsland	Farmers and Small Businesses	Yes
Brad White	Owner of irrigated farm business in Riverslea	Brad White	Yes

	July 2021	Sept 2021	Oct 2021	Dec 2021	Feb 2022	April 2022	May 2022	July 2022	Sept 2022	Oct 2022	Dec 2022
Raelene Hanratty	✓	✓	✓	✓	✓	✓	✓	✓			
Graeme Anderson	✓	✓	✓	✓	Apol	✓	✓	✓			
Stephen Dwyer	✓	✓	✓	✓	Apol		Apol	Apol			
Jeanette Howie	✓	✓	✓	✓	✓	Apol	✓	✓			
Norm Drew	✓	✓	✓	✓	✓	✓	✓	✓			
Alan Clyne	✓	✓	✓	✓	✓	✓	✓	✓			
Kate Lamb	✓	✓	✓	✓	✓	✓	✓	✓			
Brad White	Apol	✓	✓	✓	✓	Apol	✓	✓			
Benn Thexton	✓	✓	✓	✓	✓	✓	✓	Apol			

- ✓ Attended Meeting
- Apol Notification of apology
- Blank Did not attend

**5. BUSINESS ARISING FROM PREVIOUS MEETINGS**

Meeting	Agenda Item #	Action	Action Officer	Status
April	6	Mrs Crawford to co-ordinate the creation of a Conflict of Interest table for the agenda.	Crawford	Ongoing

**6. PRINCIPAL MATTERS**

**6.1 CHAIRPERSON’S REPORT**

- The Chair will provide a report.

**6.2 SIGNIFICANT ISSUES OR ACTIONS**

- There are no significant current issues or actions.

**6.3 MATTERS REFERRED BY THE BOARD**

- The Board member present will update the Committee.

**6.4 GUEST PRESENTATION – PLACE OF TAKE PROJECT**

- Representatives from DELWP will join the meeting to discuss.

**6.5 WATER SUPPLY UPDATE**

- Mr Simon Wilkinson, General Manager Service Delivery provide an update.

**6.6 CENTRAL AND GIPPSLAND SUSTAINABLE WATER STRATEGY**

- Mr Cameron FitzGerald, Managing Director, will lead discussions.

**6.7 PRICING SUBMISSION UPDATE**

- Mr Cameron FitzGerald, Managing Director, will provide an update.

**6.8 CRITICAL ASSETS PRESENTATION**

- Mr Wayne Fleming, Manager Asset Reliability, will join the meeting to discuss critical assets in the MIA.

## **7.0 FOR NOTING**

### **7.1 CORRESPONDENCE**

- Nil since last meeting.

### **7.2 FEEDBACK REGISTER (RELEVANT TO MID)**

- Nil since last meeting.

### **7.3 COMMUNICATIONS UPDATE**

- The Communications report is included with the agenda for noting.

## **8.0 GENERAL BUSINESS**

- The Chair will refer to the conflict-of-interest table and go around the table inviting members to declare other interests.
- SRW Communications – Norm Drew
- MIA Booklet, inclusion of 2003 Board policy – Norm Drew

## **9.0 NEXT MEETING**

The next meeting No. 195 of the Macalister Customer Consultative Committee is scheduled for 10.00 am on Tuesday 25 October 2022.

<b>Meeting</b>	<b>Date</b>
MCCC 195	Tuesday, 25 <sup>th</sup> October 2022
MCCC 196	Tuesday, 13 <sup>th</sup> December 2022

## **10.0 MEETING CLOSE**

**CONFLICT OF INTEREST TABLE**

<b>Name of Committee member</b>	<b>Description of interest</b>	<b>Interested parties</b>	<b>Is the interest current?</b>
Kate Lamb	Beef grazing operation in Denison	Kate Lamb	Yes
Raelene Hanratty	Owns irrigation land at Upper Maffra West and Newry	Water Share holder	Yes
	SRW Project Control Group.	SRW and DELWP	Yes
	Deputy Chair RDA Gippsland	Federal & State Governments	Yes
	Deputy Chair RFCS Gippsland	Farmers and Small Businesses	Yes
Brad White	Owner of irrigated farm business in Riverslea	Brad White	Yes

Item No: **6.5**

Subject: **September Update**

Action: **For discussion**

Author: **Matt Cook**

Responsible Executive: **Simon Wilkinson**

Date: **19/09/2022**

---

## **PURPOSE**

1. To update the MCCC on current funded projects and a seasonal update.

**RECOMMENDATION: The MCCC members note the report and discuss with members involved. Any further discussion required is taken on notice.**

## **REPORT**

### **2. Place of Take - Customer Consultative Committee**

DELWP has been invited to the October MCCC meeting to present on the work being undertaken on the 'Place of Take' project.

The Place of Take project is being implemented to:

- Provide water users more certainty about their rights to have water delivered down our rivers and enable more flexibility to manage their own delivery risks.
- Enable the Minister to make rules to cap and allow for the trade of these delivery rights.
- Protect the rights of existing entitlement holders in water systems where delivery risks are increasing.
- Give water users confidence there are strong penalties to protect them from impacts of others taking more than their fair share during any river rationing.

These changes will not affect SRW channel regulated customers and will only apply to SRW river customers to provided surety of extraction rights. Changes are due to come into effect by July 2023.

To help implement the new approach, the Department of Environment, Land, Water and Planning (DELWP) is creating a Place of Take Approvals Consultative Committee. The Committee will provide advice to the DELWP during the implementation of this new approach. Expressions of Interest to any interested SRW customers that would like to be involved with the committee has been advertised by DELWP.

The Committee will be run by DELWP in collaboration with water corporation implementation partners: Goulburn-Murray Water, Lower Murray Water and Southern Rural Water who will be invited to **'observe'** the proceedings of the Committee.

The purpose of the Consultative Committee is to enable private water users the ability to provide advice during the implementation of the Place of Take project, to ensure that rules developed are workable.

DELWP and the water corporation implementation partners will also be seeking advice on how to best to support water users in understanding and preparing for the upcoming changes. Advice from the Consultative Committee will form part of a broader program of communications and engagement being conducted by DELWP and implementation partners.

### 3. **Latrobe Reserve.**

SRW holds the Latrobe Reserve Bulk Entitlement (*Bulk Entitlement (Latrobe Reserve) Order 2013*) in the regulated Latrobe River system which has been set aside to allow for temporary water (allocation) to be made available for entitlement holders to purchase during dry conditions.

The bulk entitlement states that the DELWP, in collaboration with SRW as the manager of the reserve, must review the performance of the Latrobe Reserve and its management arrangements before October 2021.

DELWP, in consultation with SRW engaged Alluvium Consulting (in partnership with DG Consulting) to undertake an independent review of the past performance of the reserve since its establishment and evaluate the existing management arrangements for the Latrobe Reserve against the principles and rules of the Latrobe Reserve bulk entitlement. The internal component of the review was completed in early October 2021.

As part of the review, Latrobe system entitlement holders and the West Gippsland CMA were invited to provide their views on the past performance and management arrangements of the reserve. All section 51 licence holders were invited to participate in a written survey.

Alluvium's findings indicate that SRW has been managing the reserve according to its purpose – *'to make temporary water available for purchase by entitlement holders during periods of water scarcity'*.

SRW has set thresholds to assess water scarcity and calculate the volume of water to be made available and the volume to set aside for future contingency. These thresholds or scenarios are embedded into the monthly resource assessment process and monthly balance sheets. SRW has only made water allocations available from the Latrobe Reserve in line with the rules specified within the Latrobe Reserve bulk entitlement.

Several recommendation were made to assist SRW with enhancing its processes. These included recommendations on:

- Governance and documentation
- Sales process and communications
- Resource Assessment
- Assigning water allocations

The project of completing the agreed recommendations is currently underway and expected to be completed by June 30 2023. SRW staff involved include Pam Crawford, Lucas Snow, Matt Cook and Ed Smith.



#### 4. **Barriers to water utilisation in the MID Project (including Allocation review and Trading platform).**

The first part of this DELWP funding project was an external review was conducted on SRW's Allocation model covering the collection of data, the water balance model and the practice of calculating and announcing water allocations against High Reliability Water Shares (HRWS) and Low Reliability Water Shares (LRWS). The review concluded that SRW is currently meeting all of its policy requirements and natural resource management commitments.

Opportunities were identified to value add to the model including providing seasonal predictive modelling, utilising further communication tools and customer education opportunities. These opportunities are currently being explored.

The second part of this project is an external review of the current trading platform. SRW has been briefing the MCCC regularly on progress of the project and has conducted a workshop with MCCC members to ensure member feedback has been captured specifically.

On the basis of this input and the review of the consultant, SRW has gone to market with a scope of works to trial an online trading platform. SRW is currently evaluating responses from the market with the view of trialling the preferred platform in the MIA.

Further updates on this will be provided once a tenderer is in place and we will be looking for MCCC members input whilst implementing.

#### 5. **Season to date.**

On the 1<sup>st</sup> July we opened with a High Reliability Water Share of 100%. As inflows continued to be higher than average, Glenmaggie levels have been managed using a filling curve (scenario and data driven) to assist with flood mitigation. Glenmaggie continues to be managed and will be slowly brought up to an operational full supply level. Thomson reserve currently sits at 45,000 ML which is the maximum we can store in the Thomson storage.

Melbourne water has now started to manage the water levels in the Thomson dam and will start pre releasing up to 500 ML/d through the Thomson river system.

To date we have released 127,200 ML from Glenmaggie in excess of orders. Due to the continuing releases and the system being filled, Spill was made available from the 6<sup>th</sup> September and is in place for review on the 4<sup>th</sup> October. To date 650 ML of water has been utilised with in the regulated system.

With a La Nina now declared along with a Negative Indian Dipole the BoM predicts a continued wetter then normal season. This will be closely monitored in line with Spill and allocation requirements and notifications will be provided.

#### **NEXT STEPS**

<b>Who</b>	<b>Action</b>
<b>Manager Water Supply -East</b>	<b>Update on Place of Take and the Transform project. How they will complement each other. – Dec/Jan</b>

<b>Project Officer – Water utilisation</b>	<b>To present on outcome of the allocation review and give an update on the trading platform project - Nov</b>
<b>Service Delivery Officer</b>	<b>To present on the ongoing Latrobe Reserve project – Jan/Feb</b>

# Central and Gippsland Region Sustainable Water Strategy

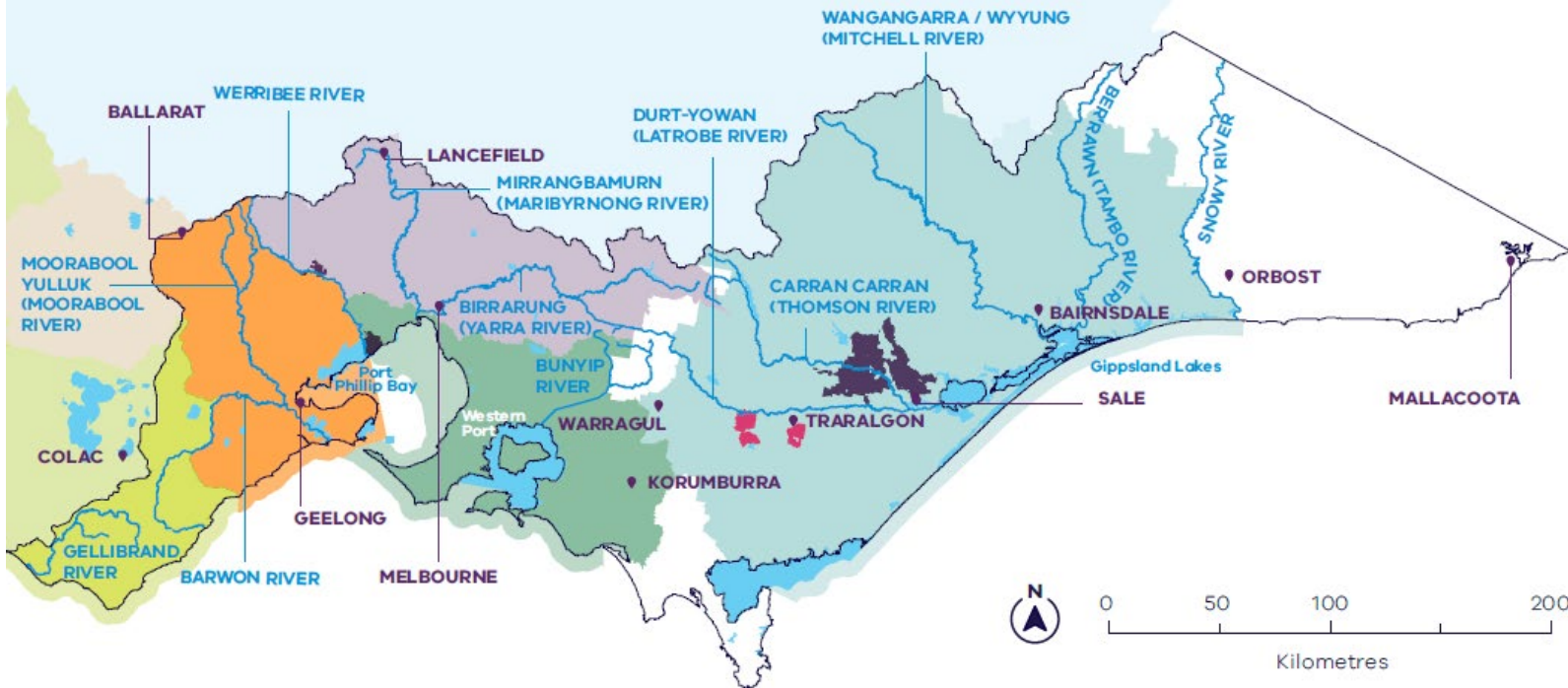


Environment,  
Land, Water  
and Planning

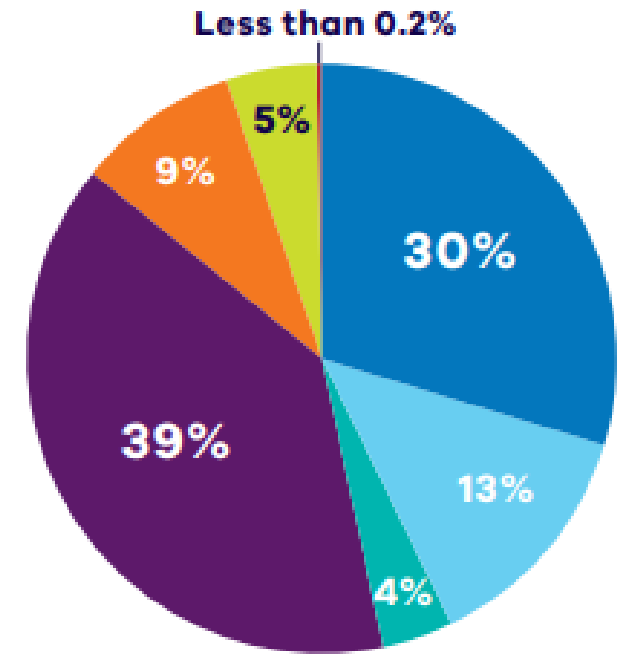
# The Central and Gippsland Region

**Notes:** Latrobe Valley mines are represented as the mining licence areas and therefore are shown larger than the actual mine pit voids.

- Gunaikurnai Land and Waters Aboriginal Corporation
- Wurundjeri Woi-wurrung Cultural Heritage Aboriginal Corporation
- Bunurong Land Council Aboriginal Corporation
- Wadawurrung Traditional Owners Aboriginal Corporation
- Eastern Maar Aboriginal Corporation
- Central and Gippsland Region
- Irrigation District
- Latrobe Valley mines
- City or major town
- River



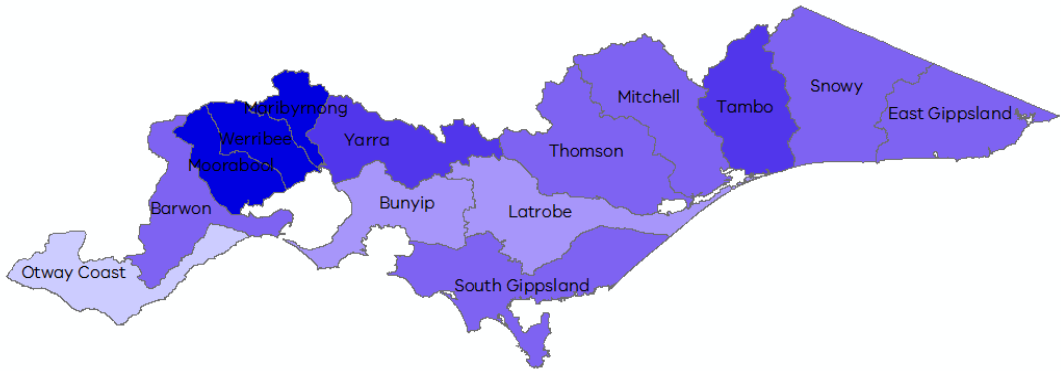
**Distribution of surface water and groundwater entitlements**



- Cities and towns - residential water use\*
- Cities and towns - non-residential (commercial, industrial and public spaces)\*
- Cities and towns - non-revenue (system losses)\*
- Agriculture
- Power generation
- Environmental entitlements
- Traditional Owners

\*Supplied by urban water corporations

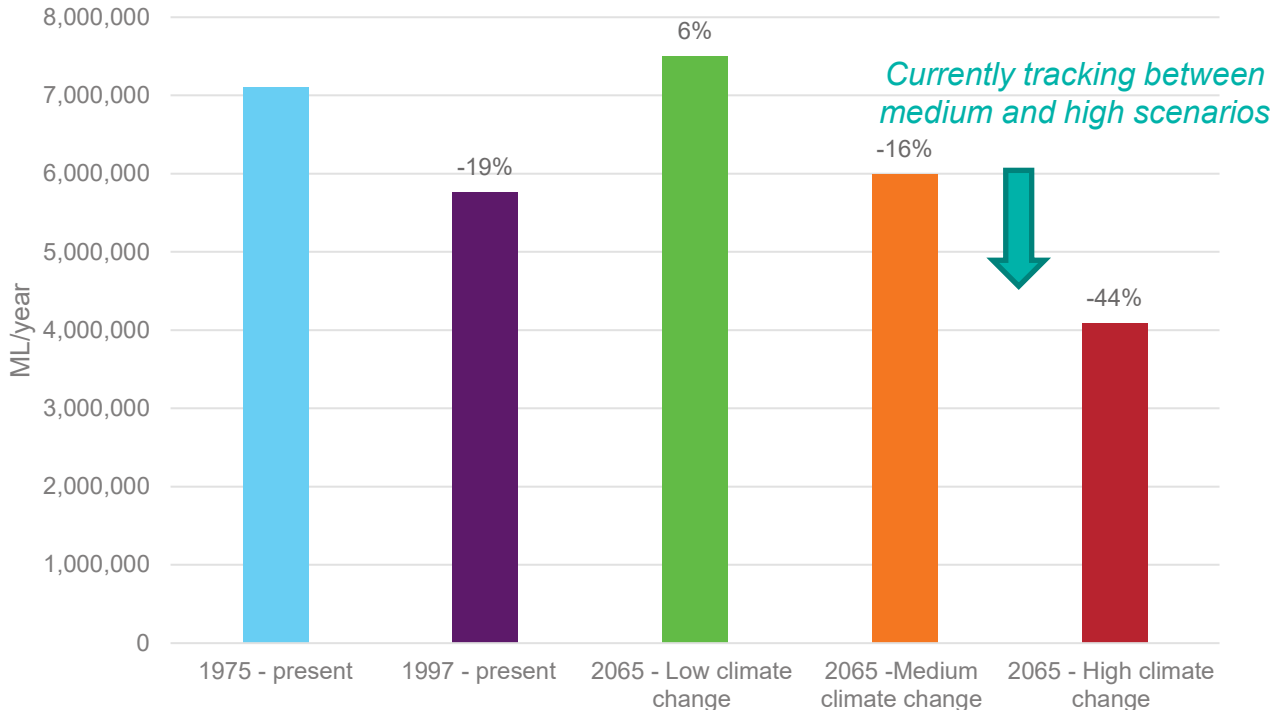
River water has already declined across the region due to drier conditions and lower on average rainfall



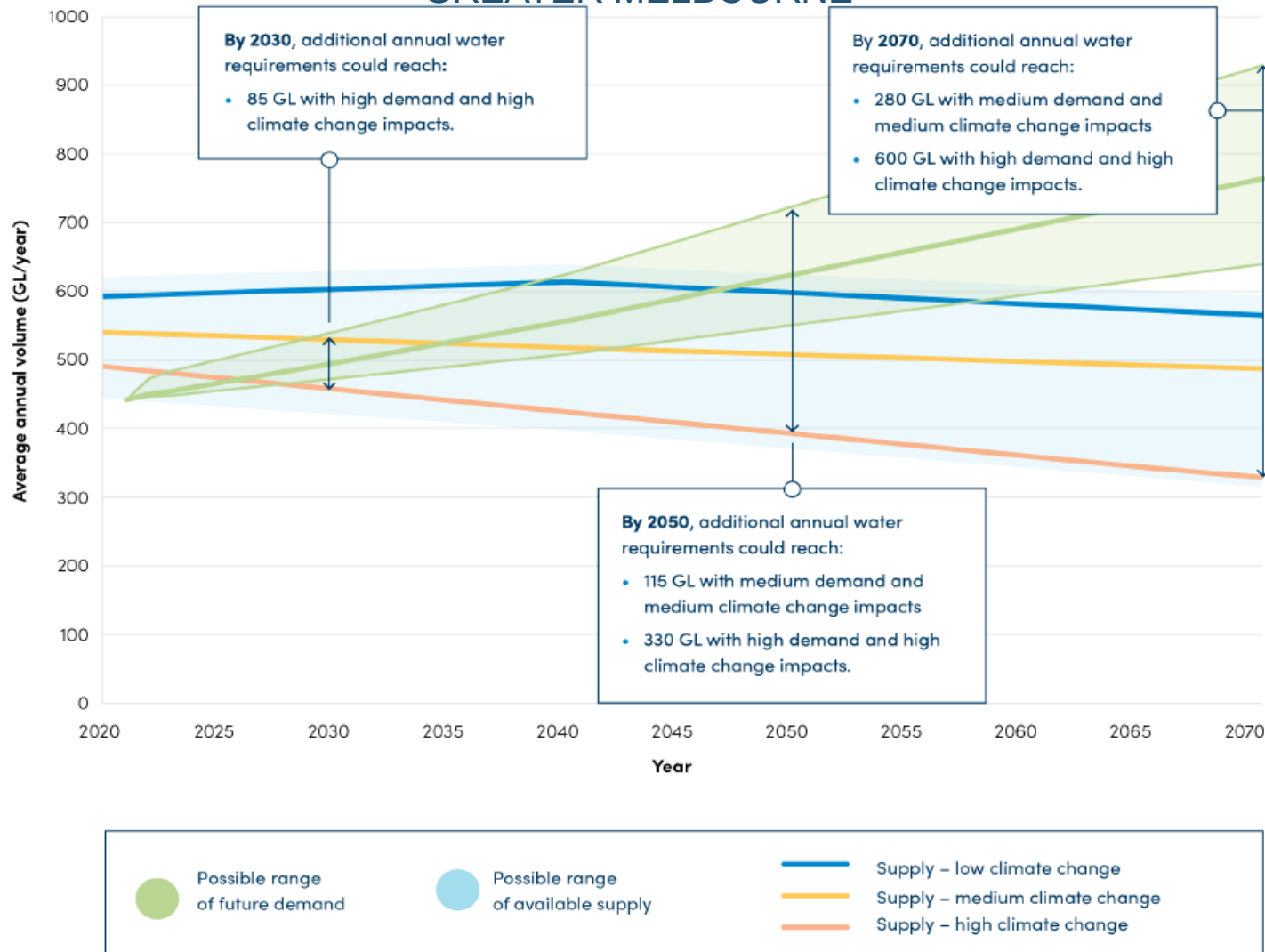
### Decline in long-term water availability

- 0% - 5% decline
- 5% - 10% decline
- 10% - 15% decline
- 15% - 20% decline
- 20% - 25% decline

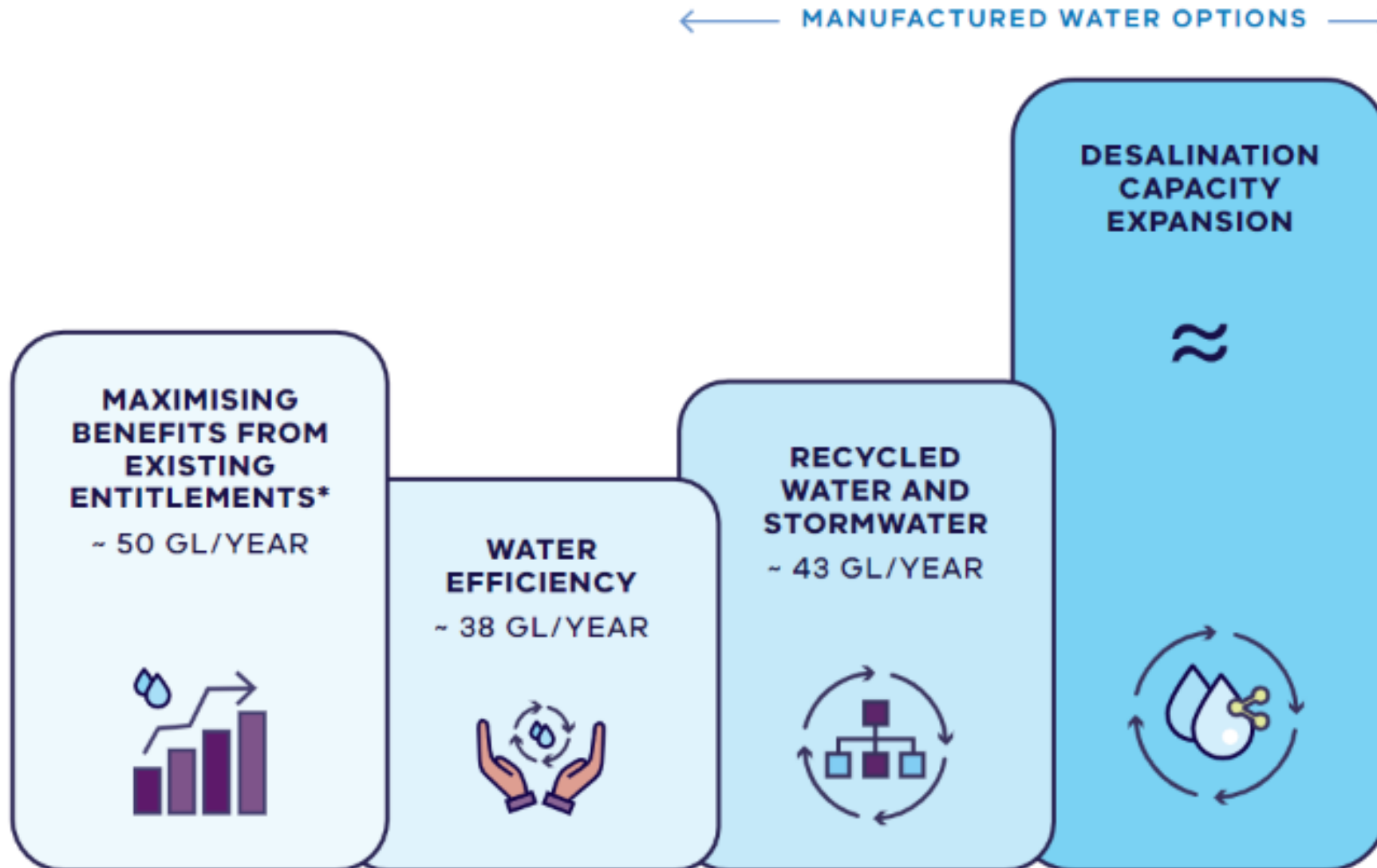
Water availability for low, medium and high climate scenarios for 2065 for the Central and Gippsland Region with percentage change from '1975-present'.



## PROJECTED FUTURE URBAN DEMANDS VS SUPPLIES FOR GREATER MELBOURNE

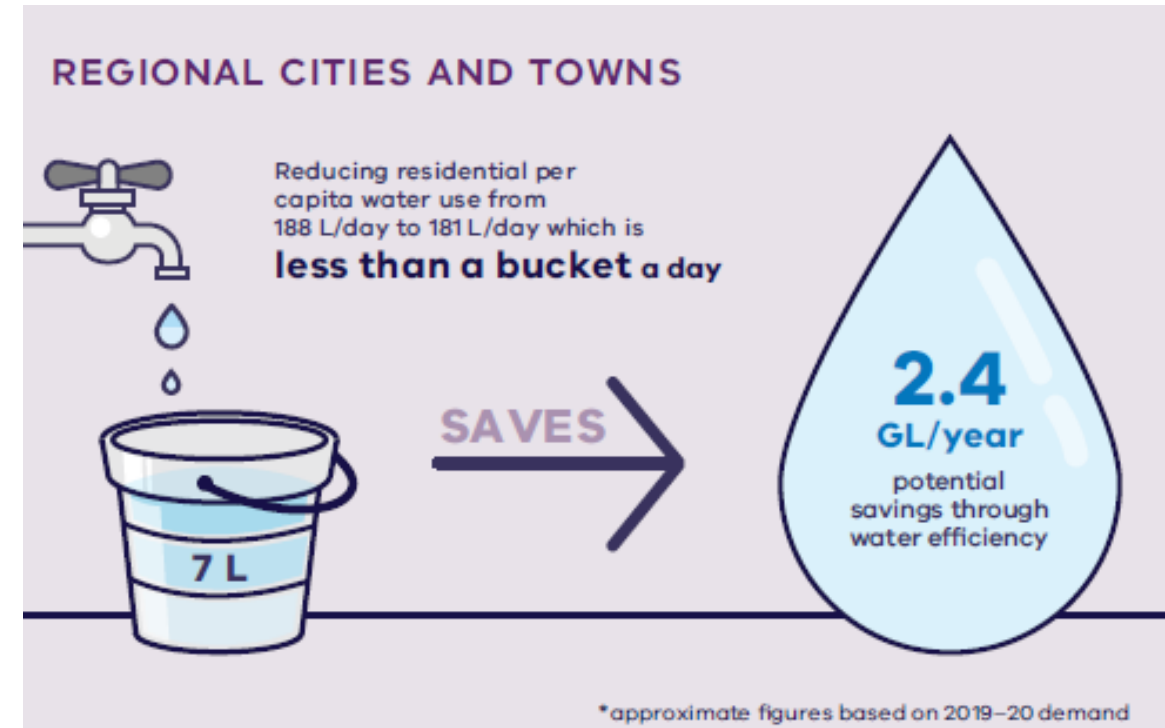
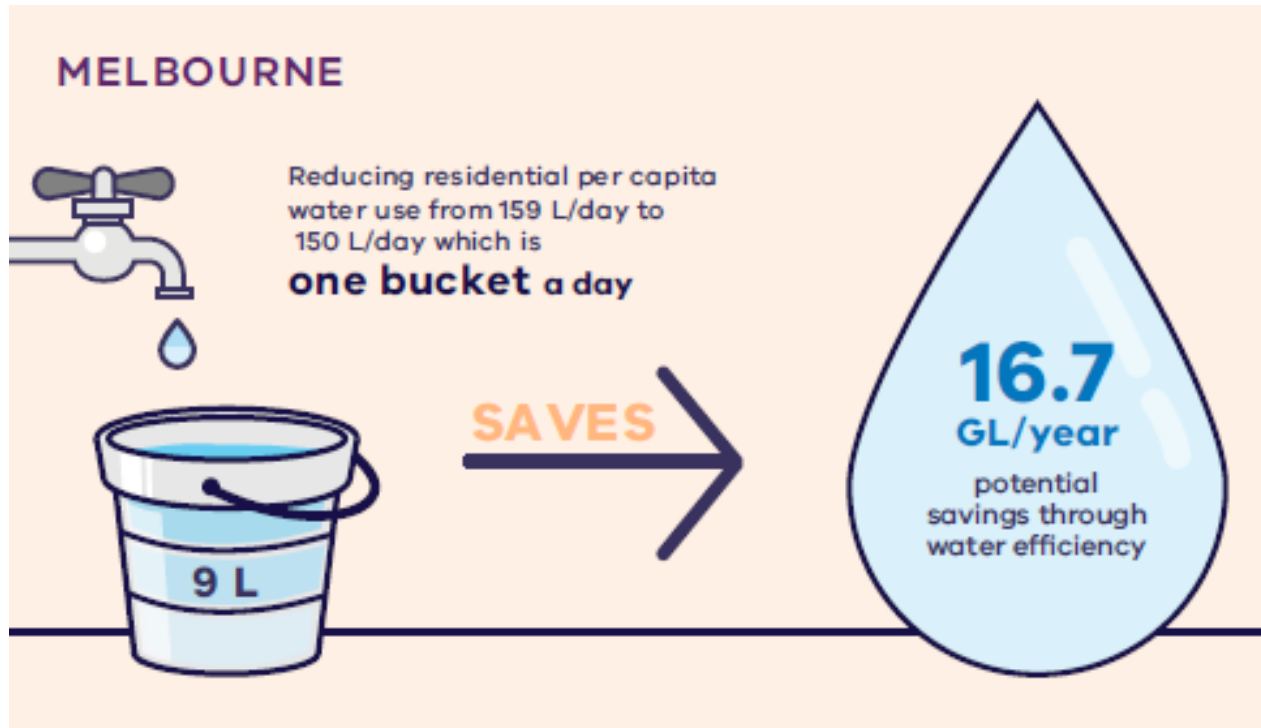


- Our population and demand for water is growing
- There is no 'spare water', even with the desalination plant operating
- More water is needed for all users and flow-stressed rivers
- Traditional Owners have a right to water justice



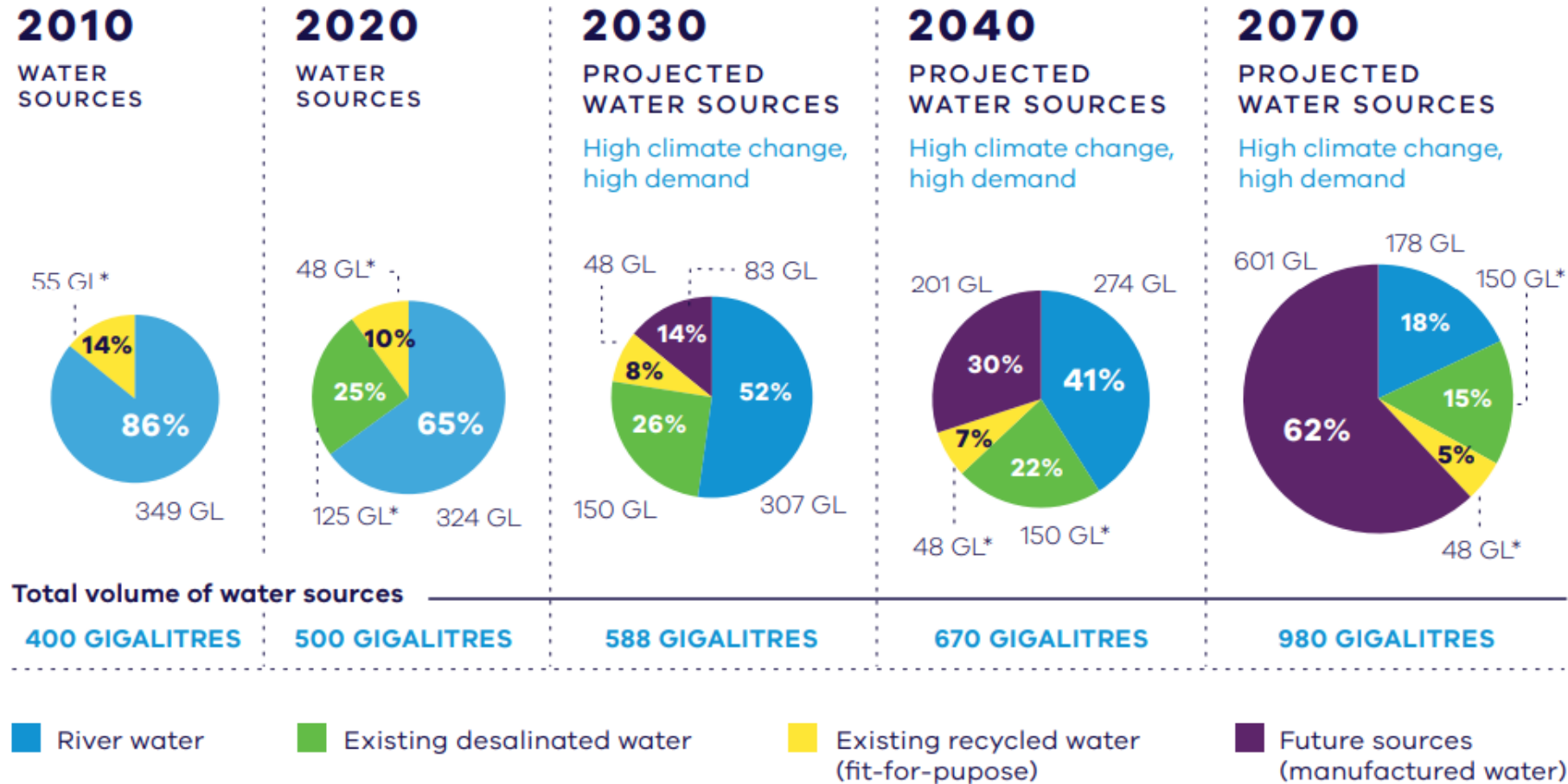
\* Water will not be taken from farmers and all existing water entitlements provided under the Water Act 1989 (Vic) will be protected

Reducing per capita consumption has significant water security implications.  
For example, we could save:





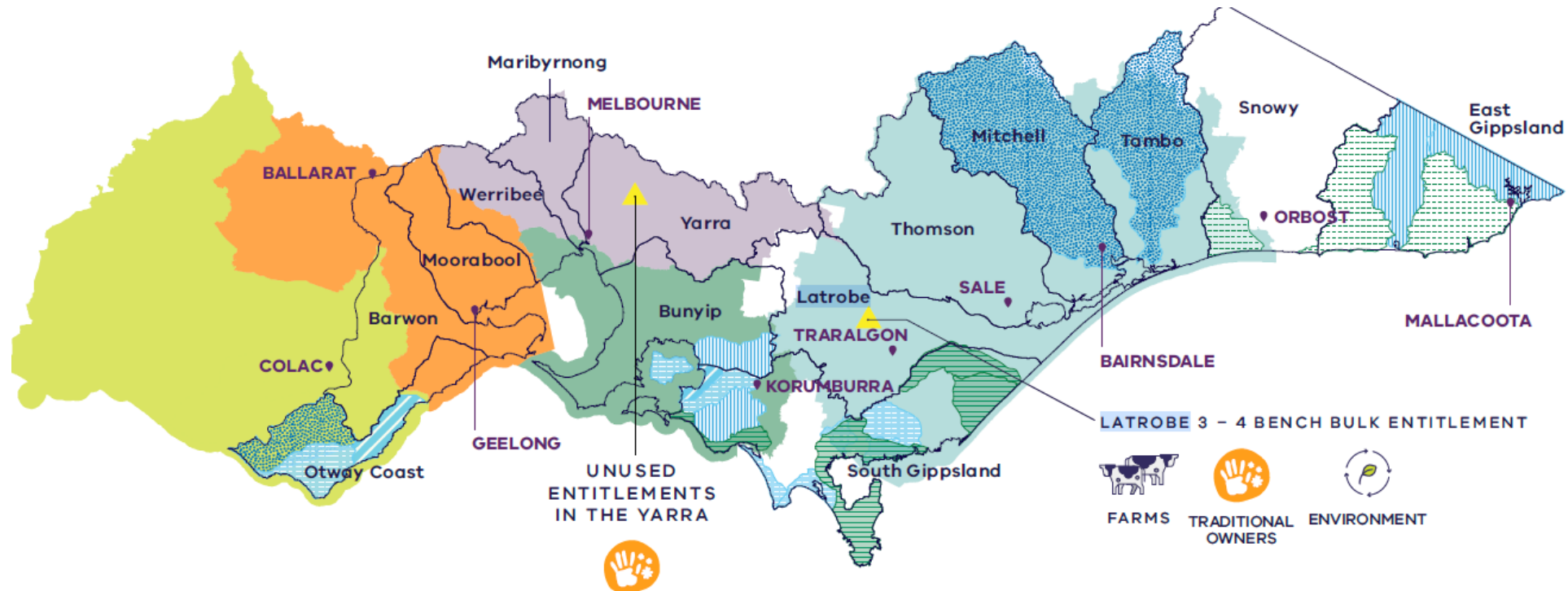
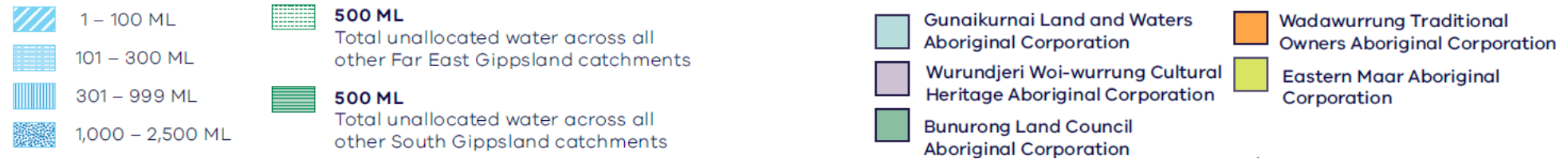
## Greater Melbourne's expected transition to using more manufactured water



\* Existing desalination and recycled water use is not being reduced, the existing desalination and recycled water percentages decrease with each total water sources volume increase

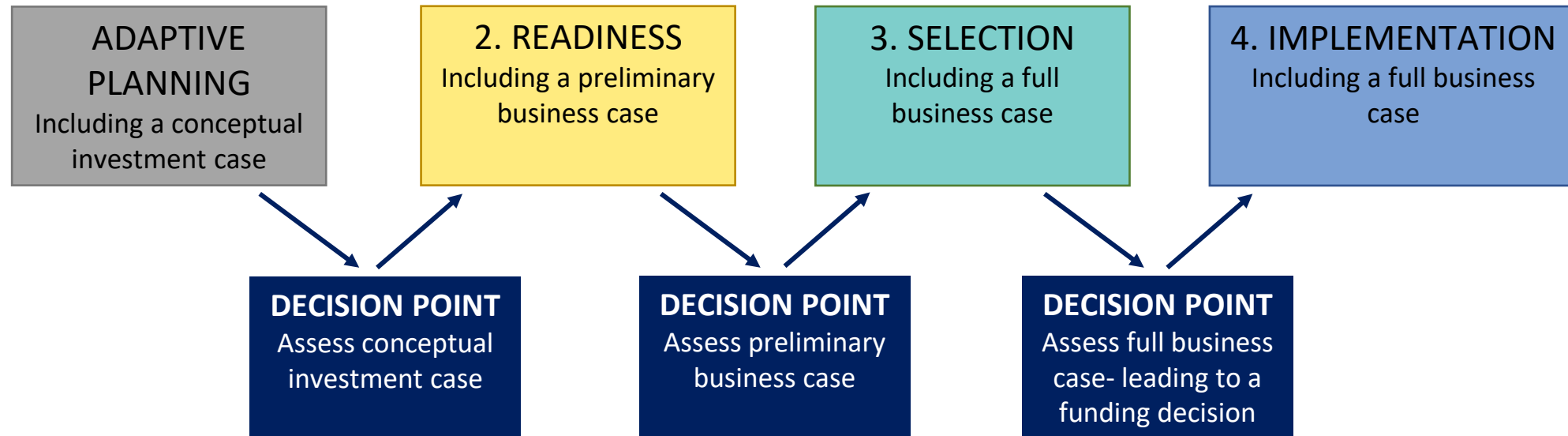
# Maximising the use of all sources of water

## UNALLOCATED RIVER WATER AND ENTITLEMENTS AVAILABLE FOR REALLOCATION



# Planning early for major water supply infrastructure projects

A Water Grid Plan will be developed to identify, prepare and progress a portfolio of preferred future urban water supply options that are regionally significant. The inaugural Water Grid Plan is planned for release in 2023 and will be updated regularly.





## Cities and towns

- Improve household and commercial/industrial water efficiency
- Investigate options to increase desalination capacity
- Increase use of recycled and stormwater for non-drinking purposes, including investigating a citywide alternative water network.
- Develop a Water Grid Plan to identify near-term and regionally significant water supply options



## Agriculture

- Improve agricultural water-use efficiency both on farm and to rural infrastructure
- Consider ways to increase the use of recycled water & stormwater for agriculture
- Help farmers get the most from the water market by improving information, trialling an online water market exchange and making water trade rules more flexible



## Traditional Owners

- A proportion of unallocated water is made available to Traditional Owners urgently
- Water returned to Traditional Owners as the use of climate-resilient water supplies increase.
- Strengthening the role of Traditional Owners in water resource planning and management



## Environment

- Identifies priority environmental water targets required to achieve waterway health improvements and options to achieve these as the use of climate-resilient water supplies increase.
- Proposes complimentary works to achieve the best environmental outcomes

## Moorabool, Barwon, Otways sub-region

- Transition to manufactured water to meet growing demands
- Return water to the Wadwurrung and Eastern Maar Traditional Owners
- Upgrades to the Geelong – Melbourne pipeline
- A focus on Integrated Water Management
- Moorabool as a case study of water resource risks in small, dry, peri-urban catchments
- Environmental water recovery for the region including in the Moorabool Yulluk (Moorabool River) and Barwon River
- Actions to improve the health of Anglesea River and estuary, Pinkalac Creek and Gellibrand River
- Complementary actions to improve overall environmental health, such as improving fish passage at Buckley Falls and rehabilitating the Moorabool Yulluck (Moorabool River) at Batesford Quarry



## Central sub-region

- Transition to manufactured water to meet growing demands
- Return water to the Wurundjeri Woi-wurrung, Wadawurrung and the Bunurong
- Reconfiguration of the Werribee system
- A focus on Integrated Water Management
- Maribyrnong as a case study of water resource risks in small, dry, peri-urban catchments
- Environmental water recovery for the region including in the Wirribi Yaluk (Werribee River), Mirrangbamurn (Maribyrnong River), Bunyip River and Birrarung (Yarra River)
- Managing pollutant loads for Port Phillip Bay and Western Port
- Complementary actions that include improving waterway health, such as fish passage in the the Wirribi Yaluk (Werribee River)



## Gippsland

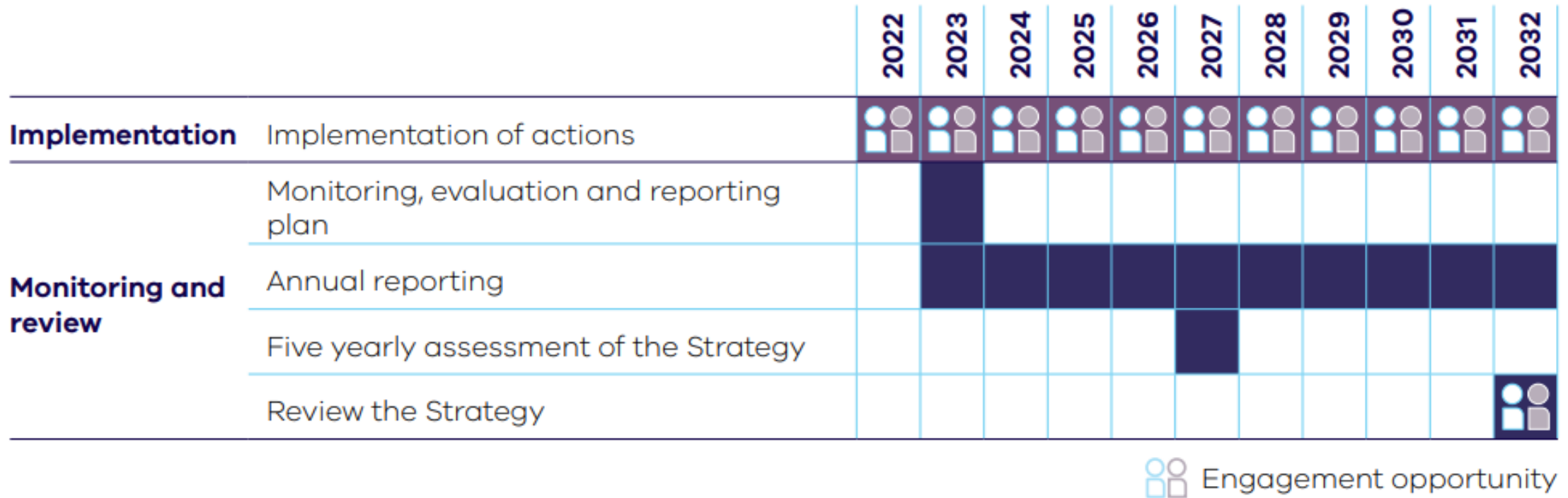
- Secure Warragul and Drouin's urban water supply
- Reallocation of some of the Latrobe 3–4 Bench bulk entitlement.
- Return water to the Gunaikurnai and Bunurong
- Next steps for the Southern Victorian Irrigation Development Project
- Environmental water recovery for the region
- Complementary actions to support waterway health, such as fish passage at Maffra Weir and upgrade of regulators for the lower Latrobe wetlands
- Review of management arrangements for the Wangangarra / Wyyung (Mitchell River)
- Managing pollutant loads for Lake Wellington and Corner Inlet and Nooramunga
- Developing a vision and plan for the water transition in the Latrobe Valley
- Reviewing the Latrobe Reserve

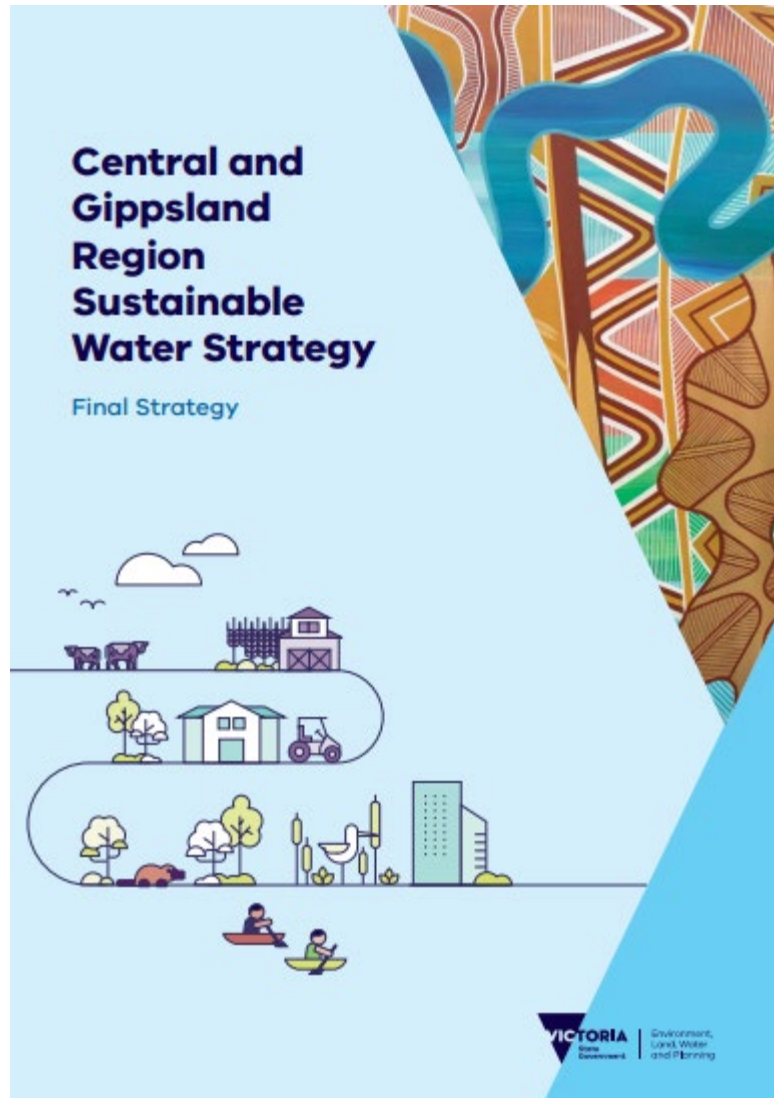


# What we heard from the community









The final Strategy and other resources, such as webinars and short videos, are available online:

[www.water.vic.gov.au/sws](http://www.water.vic.gov.au/sws)

# MID ASSET MANAGEMENT UPDATE

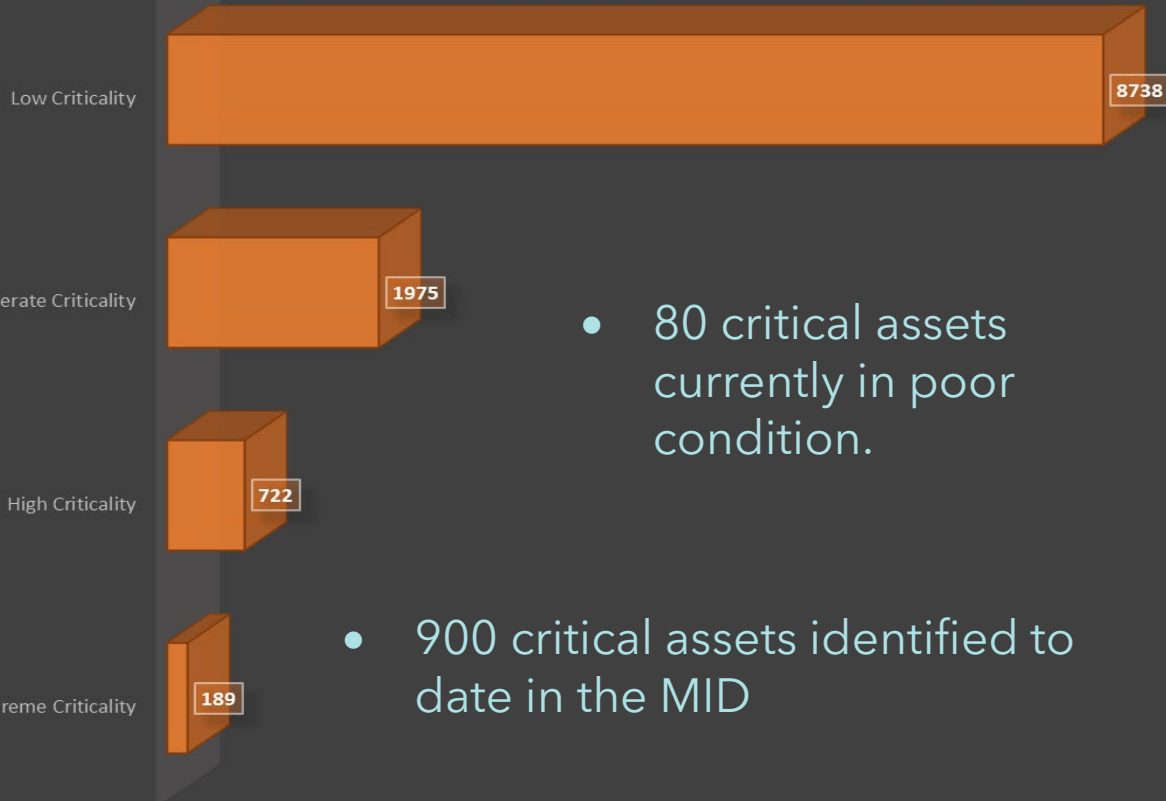
WAYNE FLEMING

MANAGER ASSET RELIABILITY

# CRITICALITY & CONDITION RATINGS

## ASSET CRITICALITY

- Criticality rated 11,624 assets to date.

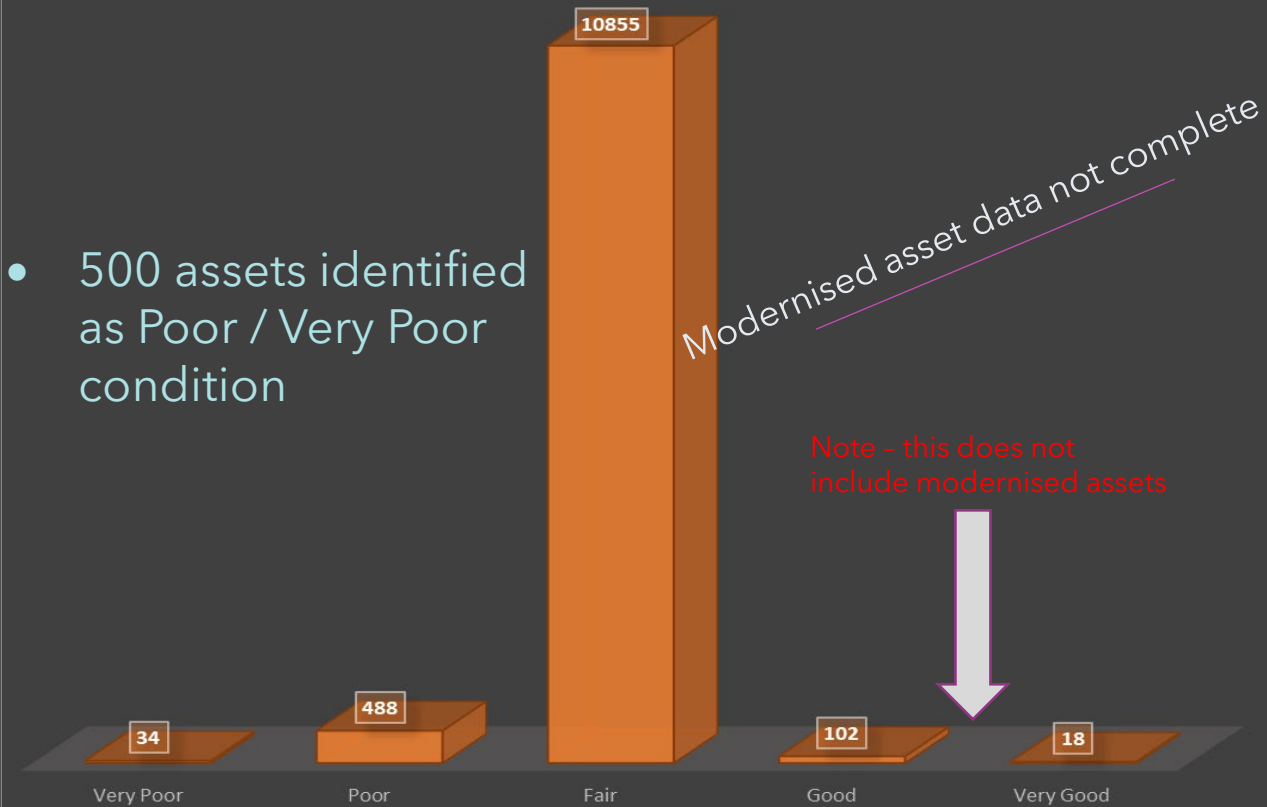


- 80 critical assets currently in poor condition.

- 900 critical assets identified to date in the MID

## ASSET CONDITION

- Condition rated 11,497 assets to date.



- 500 assets identified as Poor / Very Poor condition

Modernised asset data not complete

Note - this does not include modernised assets



# Assessing Criticality

Criteria	Unit	CRITICAL	HIGH	MODERATE	LOW	NOT
		Certain 5	Likely 4	Possible 3	Unlikely 2	Rare 1
Condition Rating		Very Poor	Poor	Fair	Good	Very Good
Asset Age	Years	>80	>60	>40	>20	>10
Performance	hrs	24hrs	12hrs	6hrs	3hrs	1hr
Customers Effected	%	100%	75%	50%	25%	<25%
Capacity	ML/d	250+	150-250	75-150	25-75	0-25
Environmental Impact	CRM	Certain	Likely	Some Chance	Unlikely	Rare
Property Damage	CRM	Certain	Likely	Some Chance	Unlikely	Rare
Safety	CRM	Certain	Likely	Some Chance	Unlikely	Rare
Security	CRM	Certain	Likely	Some Chance	Unlikely	Rare
Redundancy	%ML/d	None	25%	50%	75%	100%
Alternate Supply	%ML/d	None	25%	50%	75%	100%
Likelihood of failure		Almost Certain	Likely	Some Chance	Unlikely	Rare

Condition

5	Mod	Mod	High	Extreme	Extreme	
4	Low	Mod	High	Extreme	Extreme	
3	Not	Low	Mod	High	High	
2	Not	Low	Low	Mod	High	
1	Not	Not	Low	Mod	High	
		1	2	3	4	5

Criticality

Service	%	100% Customers	75% Customers	50% Customers	25% Customers	<25% Customers
Safety		Loss of Life Staff / Public	Permanent Injury or Illness	Major Injury Requiring on going treatment	Minor Injury resulting in Hospitalisation	First Aid Injury Not requiring Hospitalisation
Transport Disruption		Freeway, Highway or Railway Disrupted	Aerial Road or Major Use road disrupted	Residential or rural road disrupted	Unpaved Road / Farm Access track disrupted	On farm access disrupted
Revenue Loss	\$	Losses >5M	Losses >1M	Losses >500K	Losses >250K	Losses >100K
Environmental Damage		Permanent and irreversible damage to SRW or neighboring properties	Prolonged damage major rehabilitation required to SRW or neighboring properties	Major damage to SRW and neighboring property requiring rehabilitation	Minor damage to SRW and neighboring property requiring rehabilitation	Minimal environmental damage localised to site
Reputation		Permanent and irrevocable damage with shareholders, customers and media	Significant Damage with shareholders, customer groups and media	Major Damage with Customers and Media	Minor Damage with customers and local media	Minor Damage with customers effected
Customer Losses	\$	Irrigation district area failure Expenditure & Losses >25M	Multiple enterprise failure Expenditure & Losses >5M	Expenditure & Losses >1M	Expenditure & Losses >200K	Expenditure & Losses >40K
Reinstatement Costs	\$	> 250K	<250K	<100K	<50K	<25K

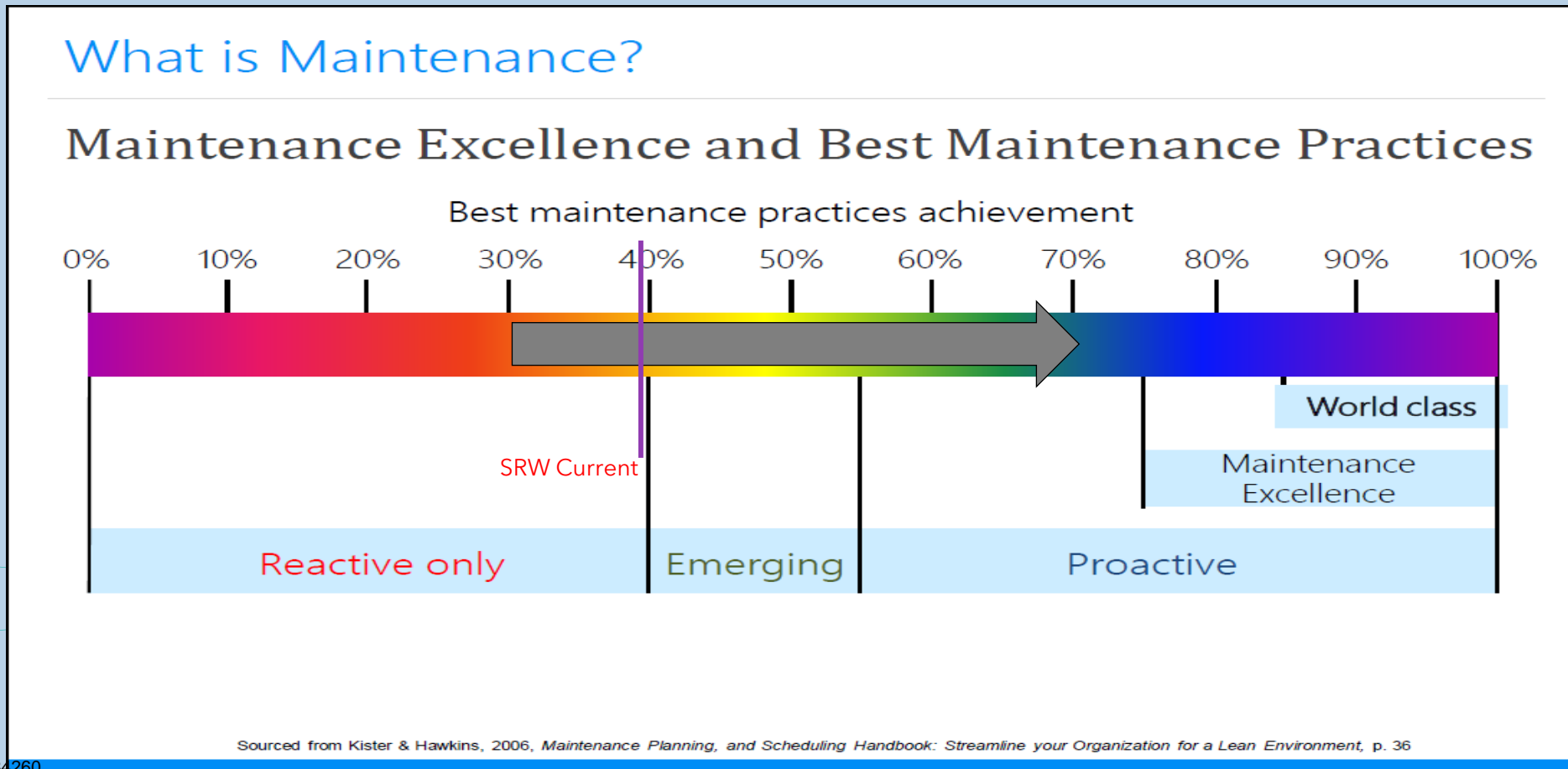
ASSET NAME	Criticality Score with Existing Mitigation	Likelihood of Failure /Condition	Organisational Risk
MW Offtake tunnel	4.27	3	HIGH RISK
2000 Maffra Depot Tower/Node	4.14	3	HIGH RISK
3000 Nambrook Tower/Node	4.14	3	HIGH RISK
4000 Sale Tower/Node	4.14	3	HIGH RISK
5000 Lannigans Tower/Node	4.14	3	HIGH RISK
6000 Luckmans Tower/Node	4.14	3	HIGH RISK
8000 Heyfield Tower/Node	4.14	3	HIGH RISK
MID_MN_002175_IPM835_Regulator (Hanrattys)HANRATTY'S D	4.00	3	HIGH RISK
(ME 000400) IPM1053 Regulator AutomationClarkes doors	4.00	3	HIGH RISK
(MN 025428) IPM929 Regulator Automation80 FOOT DROP	4.00	4	EXTREME RISK
(MSALE 002100) IPM1055 Regulator AutomationMaffra Sale rd	4.00	3	HIGH RISK
(MS 003517) IPM54 Regulator AutomationMS (WILSONS RUN)	4.00	4	EXTREME RISK
(ND 1 000030) IPM285 Regulator AutomationND #1 OFFTAKE	4.00	4	EXTREME RISK
(ND 1 001200) IPM287 Regulator AutomationMcAINCH 2	4.00	4	EXTREME RISK
(ND 4-1 000000) IPM303 Regulator Automation4/1 OFFTAKE	4.00	4	EXTREME RISK
TRS Switching doorsTRS Switching doors	4.00	3	HIGH RISK
TRS OUTFALLTRS OUTFALL	4.00	4	EXTREME RISK
BS InletBS Inlet	4.00	2	MODERATE RISK
BS OutletBS Outlet	4.00	2	MODERATE RISK

Redundancy	Alternate supply	Health Safety Impact	Environmental impact	Reputation Impact	Revenue Loss	Reinstatement Costs	Customer Affected	Customer Losses	Rectification Time	Capacity Loss	Property Damage	Transport Disruption
Single / No	No	HIGH	Low	VERY HIGH	>\$200k	>\$200k	>50%	>\$1m	>4 WEEKS	>100%	>\$1M	NA



# Maintenance and Inspections

- Moving towards increased proactive practices for critical assets



# AM Enhancements

- Capital program development for critical assets
  - **Critical asset replacement programs**
- Inspection and maintenance plans being developed
  - **Based on criticality**
- Improving data collection and recording capabilities
  - **MMS - Authority**
- **Criticality \* Condition = Risk**
  - **Basis for decision making - setting priorities**
- Implementing Proactive maintenance practices for critical assets
  - **Improved reliability, reduce breakdowns, improve productivity, reduce costs**

# Capital Works

- **Capital program development for critical assets**
  - *Main Southern Tunnel No 5 Reline/Repair*
  - *Main Southern Concrete Flume Joint Repair*
  - *Main Northern Channel Erosion Repair*
  - *Critical Regulator Replacement Program*
  - *Main Southern Siphon No 2 Replacement*
  - *Main Northern Siphon No 2 Replacement*
  - *Based on criticality*

Criticality and Condition Ratings being used to determine capital works priorities.



# Any Questions?

Item No: **7.2**  
Subject: **Communications and Engagement report – September 2022**  
Action: **For noting**  
Author: **Kris Perkovic, Senior Community Engagement Adviser**  
Date: **27/09/2022**

---

## **PURPOSE**

- To update the Macalister Customer Consultative Committee on recent communications and engagement activities.

**RECOMMENDATION:** The Committee note the report.

## **PREVIOUS COMMITTEE CONSIDERATIONS**

2. Communications and Engagement activity is reported to each meeting.

## **BACKGROUND**

3. The Communications and Engagement team develops communications plans, issues media releases, manages the website and social media, customer and community engagement activities and looks after media enquiries.

## **REPORT**

### **4. Phase 2 MID2030 tender announcement**

As the committee would be aware, SRW announced on 7 September that Jaydo Construction will deliver the Newry Pipeline under Phase 2 of MID2030 project. Comms activities included:

- Media release: [Phase 2 MID2030 Project tender awarded](#)
- Social media
- Email to MIA customers

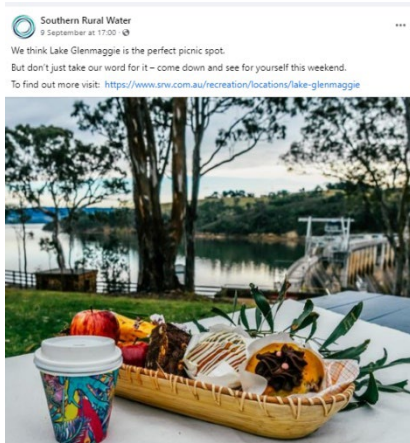
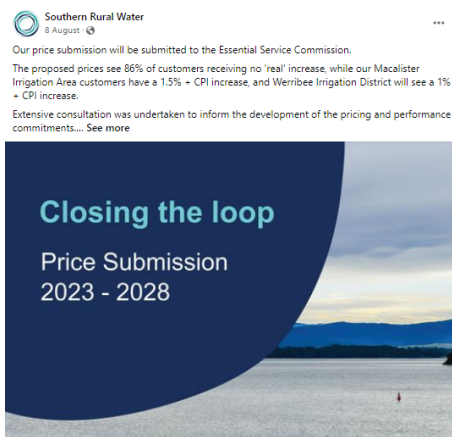
### **5. Other media releases**

[Spill declared in the Macalister Irrigation District](#) (5 September)

[Planned new fishway at Maffra Weir to benefit local environment](#) (19 August)

## 6. Social media

Our social media campaigns have received good responses. Below are some examples of content since the last meeting.



## 7. Newsletters

The weekly MID snapshots are available on our website.

**NEXT STEPS:** A further update will be provided at the next MCCC meeting.