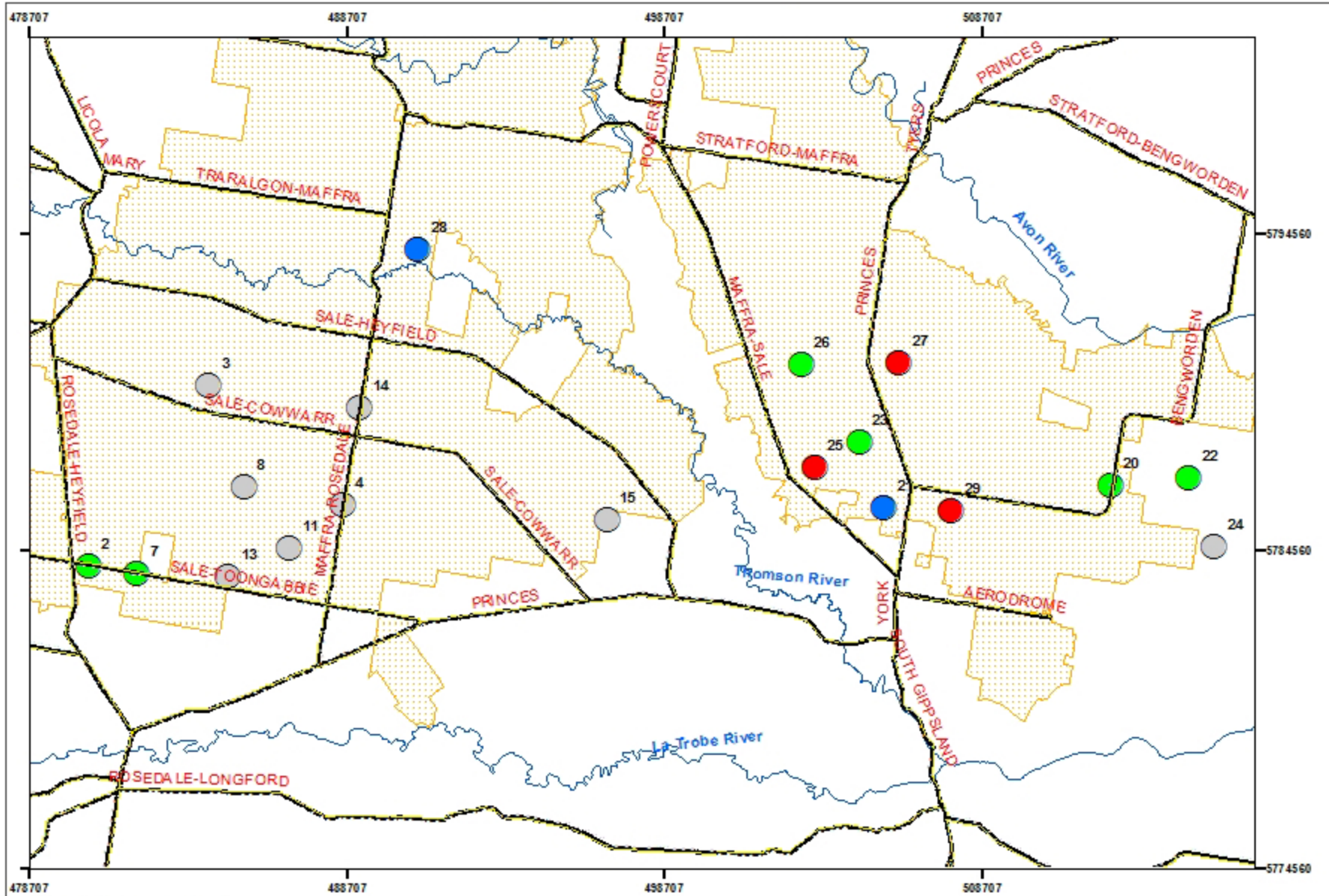
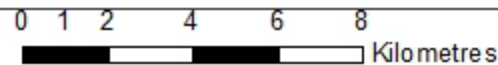


# Groundwater Control Pump Status - February 2018



## Legend

- Sealed Roads
- Major Rivers
- Pumps required to be ON but NOT operational
- Pumps OFF not needed for watertable control
- Pumps undergoing capital upgrade
- Pumps ON for watertable control
- Irrigation District Boundary



Map produced by Southern Rural Water.  
 For further information contact: (03) 5139 3100.  
 Produced By: Becky Van Baalen

Date: Wednesday, 7 February 2018

Map Projection: GDA\_1994\_MGA\_Zone\_55

### Source and Accuracy

Data information is primarily sourced from data supplied and used with the permission of the Department of Natural Resources and Environment, Victoria.

Care has been taken to ensure the accuracy of this map, however Southern Rural Water does not accept responsibility for any errors or omissions.

