



# Bunyip & Mornington Peninsula Basin Local Water Report 2019-20

## Introduction

Welcome to our annual Local Water Report for our Bunyip and Mornington Peninsula customers. This report provides information on:

- how our rivers fared last season (2018-19);
- groundwater level trends;
- the number of irrigation licences in each of our systems;
- how much water irrigators used last season, compared with previous years; and
- emerging local water issues.

## What happened with your local rivers last season?

### Bunyip/Tarago River system

The Bunyip/Tarago system maintained steady flows throughout the season, some minor releases from the Tarago Reservoir were required in late December 2019 to mid January 2020 to support irrigation demand from the river system, however no further releases were required, due to good rainfall throughout the first half of 2020.

### Lang Lang River/Minnieburn system

The Lang Lang River system maintained relatively steady flows early in the season before dropping in January and increasing in April. Active irrigators were placed on pumping restrictions during this time.

### Other creeks and streams

A majority of the creeks and streams kept reasonable flows throughout the first half of the season. However, drier conditions were experienced during early summer through to the end of the season with lower than usual winter flows.

## Drainage

The drainage system in the Koo Wee Rup – Longwarry Flood Protection District is the responsibility of Melbourne Water.

Melbourne Water, along with Cardinia, Casey and Baw Baw Shire Councils and the local community, look after the district's drains and flood protection structures using funds collected through a special rate by South East Water.

Melbourne Water looks after the precept drains and the carrier drains, while council looks after the council-owned drains and the community is responsible for any private drains.

## Rosters and restrictions

When river, creek and groundwater levels drop, we often have to introduce rosters, restrictions or bans to ensure a fair distribution of available water to all licence holders.

You can find your area's hotline number and local management rules by visiting [www.srw.com.au/customer/rosters-and-restrictions](http://www.srw.com.au/customer/rosters-and-restrictions)

## Surface water figures

The table below compares last season's usage with the previous four years.

River system	Number of licences #	Licensed volume (ML)#	Total Volume Extracted (ML)				
			2019-20	2018-19	2017-18	2016-17	2015-16
Bunyip Tarago	373	7239	1,290	2,728	2,149	1,931	2,631
Lang Lang River	49	1048	340	449	430	402	431
Cardinia Creek	41	745	66	143	184	181	371
Watsons Creek	10	764	646	303	205	325	196
Toomuc Creek	14	219	74	71	89	93	106
Deep Creek	7	150	45	57	25	42	25
Clyde Creek	4	449	119	261	220	20	41
Yallock Creek	41	829	372	405	419	453	404
Dandenong Creek	27	1025	660	983	828	507	719
Main Creek	12	80	48	44	55	60	45
Stony Creek	25	374	19	20	20	17	20
Bunyip Basin Misc	6	107	279	372	275	314	298
Peninsula Basin Misc	64	1653	665	405	517	530	577
<b>Totals</b>	<b>689</b>	<b>14970</b>	<b>4,623</b>	<b>6,241</b>	<b>5,416</b>	<b>4,875</b>	<b>5,864</b>

# Does not include farm dam registration licences

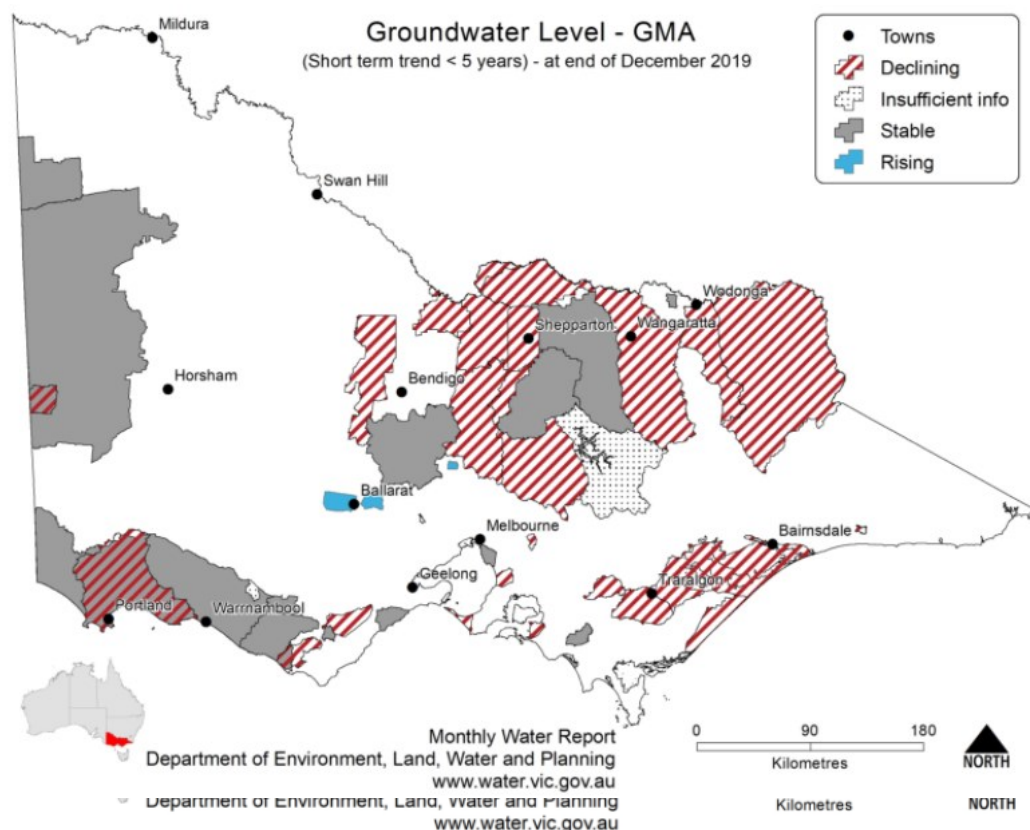
# What happened with your local groundwater last season?

## Overview

There are four Groundwater Management Units within the Bunyip and Peninsula basin - Frankston, Moorabbin, Nepean and Koo Wee Rup. The main aquifers in Frankston Moorabbin and Nepean are shallow and sandy. In Koo Wee Rup, the main aquifer is deep and confined.

Water quality and yield can vary greatly across the region and groundwater is generally used for irrigation or domestic and stock purposes. The Department of Environment, Land, Water and Planning (DELWP) has limited State Observation Bore Network coverage in Frankston and Moorabbin, but has quite extensive coverage in Nepean and Koo Wee Rup.

Follow this [link](#) if you would like to know more about groundwater management in your area.



Use this [link](#) to view groundwater trends across Victoria.

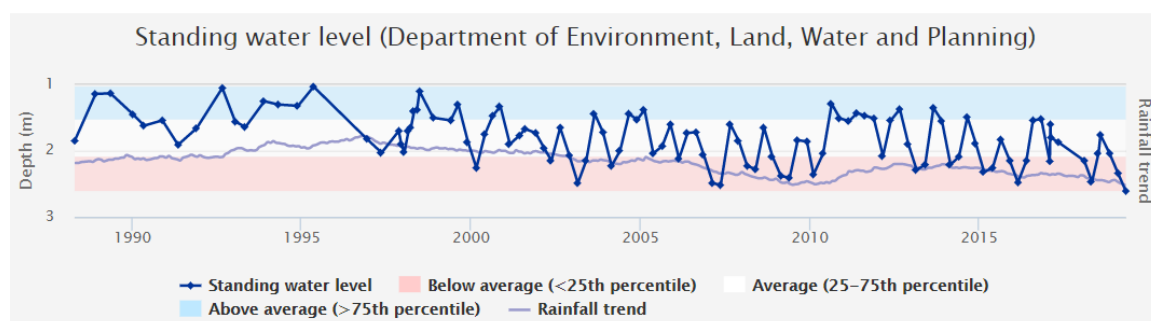
## Koo Wee Rup Water Supply Protection Area (WSPA)

The 2019-20 annual report for the Koo Wee Rup Water Supply Protection Area is available to download [here](#).

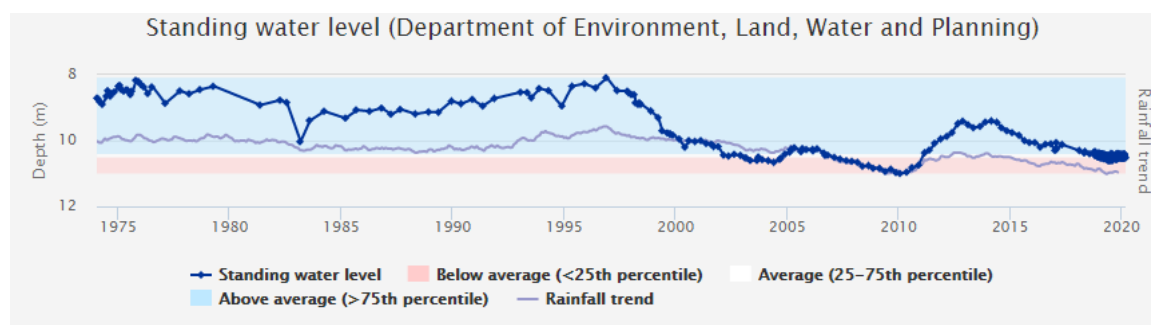
For more information on the management of the Koo Wee Rup Water Supply Protection Area click [here](#) to read the Groundwater Management Plan

## Frankston

Frankston GMA received 795mm of rain at the Bonbeach rain gauge station which was approximately 90mm more than the long term average of 708mm. Groundwater usage last year was 686ML compared to the long term average of 207ML. Water levels this year are average to below average.



## Frankston – Stevensons Road Road (76210)

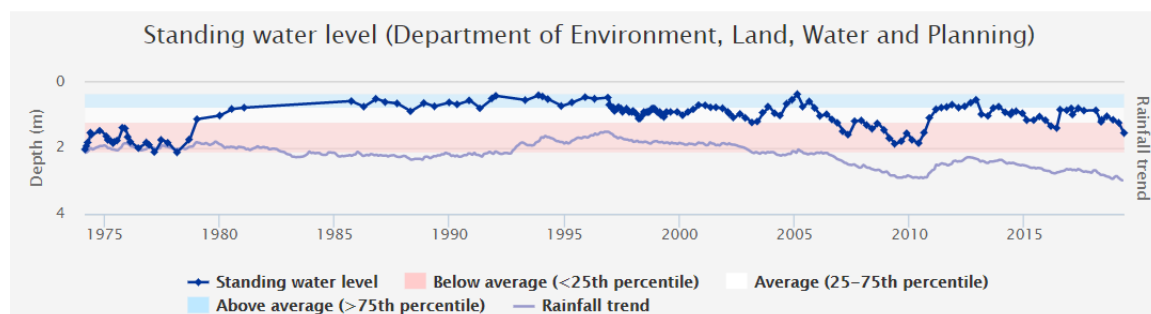


## Frankston - Dandenong Hasting Road (62949)

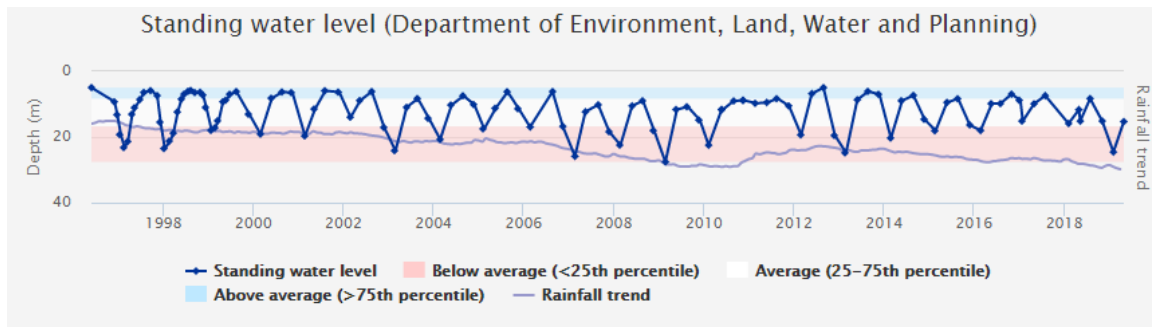
## Moorabbin

Moorabbin GMA received 805mm of rain at the Moorabbin Airport rain gauge station which was 100mm more than the long term average of 705mm. Groundwater usage last year was 816ML compared to the long term average of 1,127ML. Water levels this year are average to below average.

Water levels this year are average to below average.



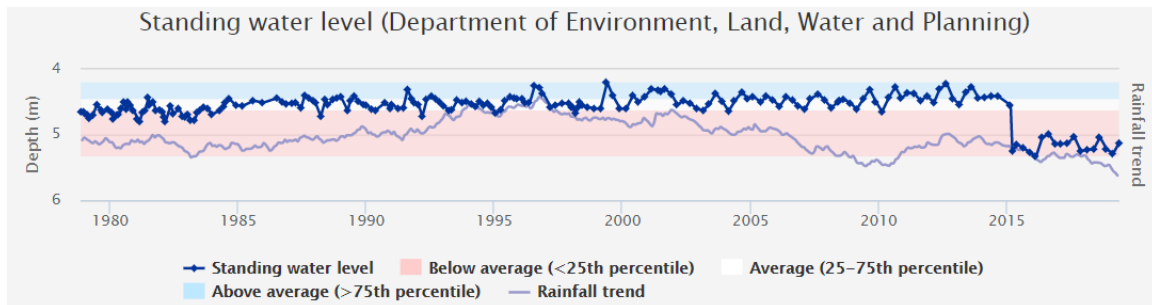
## Moorabbin – Bunney Road (81425)



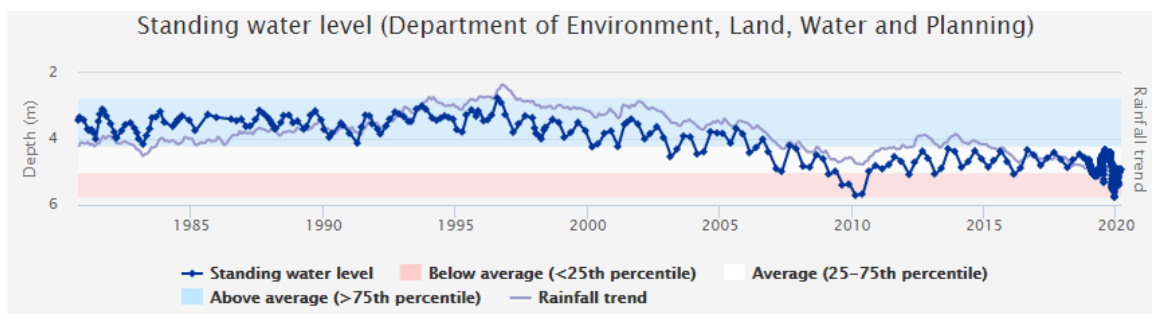
Moorabbin – Farm Road (127480)

### Nepean (Mornington Peninsula)

Nepean GMA received 793mm of rain at the Rosebud rain gauge station which was approximately 10mm more than the long term average of 782mm. Groundwater usage last year was 2,812ML compared to the long term average of 2,989ML. Water levels this year are average to below average.



Nepean – Melbourne Road (84884)



Nepean – Boneo Road (100023)

To find out more information about the bore depths in your area visit:

[https://www.vvg.org.au/vvg\\_map.php](https://www.vvg.org.au/vvg_map.php)

## Groundwater figures

Groundwater system	Number of licences	Licensed volume (ML)	Total Volume Extracted (ML)				
			2019-20	2018-19	2017-18	2016-17	2015-16
Koo Wee Rup WSPA Zone 1	340	12,575	153	361	385	338	495
Koo Wee Rup WSPA Zone 2A			86	236	210	182	241
Koo Wee Rup WSPA Zone 2B			428	875	682	705	992
Koo Wee Rup WSPA Zone 3			1	2	5	22	20
Koo Wee Rup WSPA Zone 4			274	392	393	346	539
Koo Wee Rup WSPA Zone 5			222	347	217	239	319
Koo Wee Rup WSPA Zone 6			22	27	27	21	34
Koo Wee Rup WSPA Zone 7			1,726	1,724	1,532	1,650	1,707
Unincorporated	225	10,317	1,321	1,609	1,062	1,028	1,434
Frankston GMA	28	2212	686	183	119	148	301
Moorabbin GMA*	53	2604	816	1,228	1,212	925	1,293
Nepean GMA	75	6104	2,812	2,856	3,024	2,304	2,961
<b>Totals</b>	<b>721</b>	<b>33,812</b>	<b>8,445</b>	<b>9,731</b>	<b>8,797</b>	<b>7,098</b>	<b>10,336</b>

The table above compares last season's usage with the previous four years.

\*Also included in the Yarra Basin

## Water trading for 2019-20

The table below shows the number and volume (ML) of water trades. Temporary and permanent volume trades show water trades across different locations, as distinct from ownership changes that are part of land transfers.

1. Previous years water trade ML volumes , numbers and traded price can be found at: <http://waterregister.vic.gov.au/water-trading/take-and-use-licence-trading>

Basin / GMU	Permanent trade		Temporary trade	
	Number	Volume (ML)	Number	Volume (ML)
Koo Wee Rup WSPA	1	100	17	671.6
Moorabbin GMA	1	2	1	2
Nepean GMA	0	0	7	233
Bunyip Basin	7	175.2	8	366

## More information

For more information about rural water use in your area, please contact your local field officers: **Frank Crameri** on **0427 564 367** or **Mathew Grivas** on **0427 317 436** or phone Southern Rural Water on 1300 139 510.

Southern Rural Water is publishing local water reports for all basins. You can view these online at our website ([www.srw.com.au](http://www.srw.com.au))

### ***PLEASE DON'T DRINK OUR WATER***

ANY water from sources managed or licensed by Southern Rural Water, including irrigation storages, channels, rivers and creeks, groundwater and farm dams, is untreated. It should not be considered safe for human consumption without proper treatment.