

This is the results of dam break model when the breach occurs in **1 minute**.

Figure 1 - Location of Breach for Operating Level of 12mAHD and Maximum Flood Level

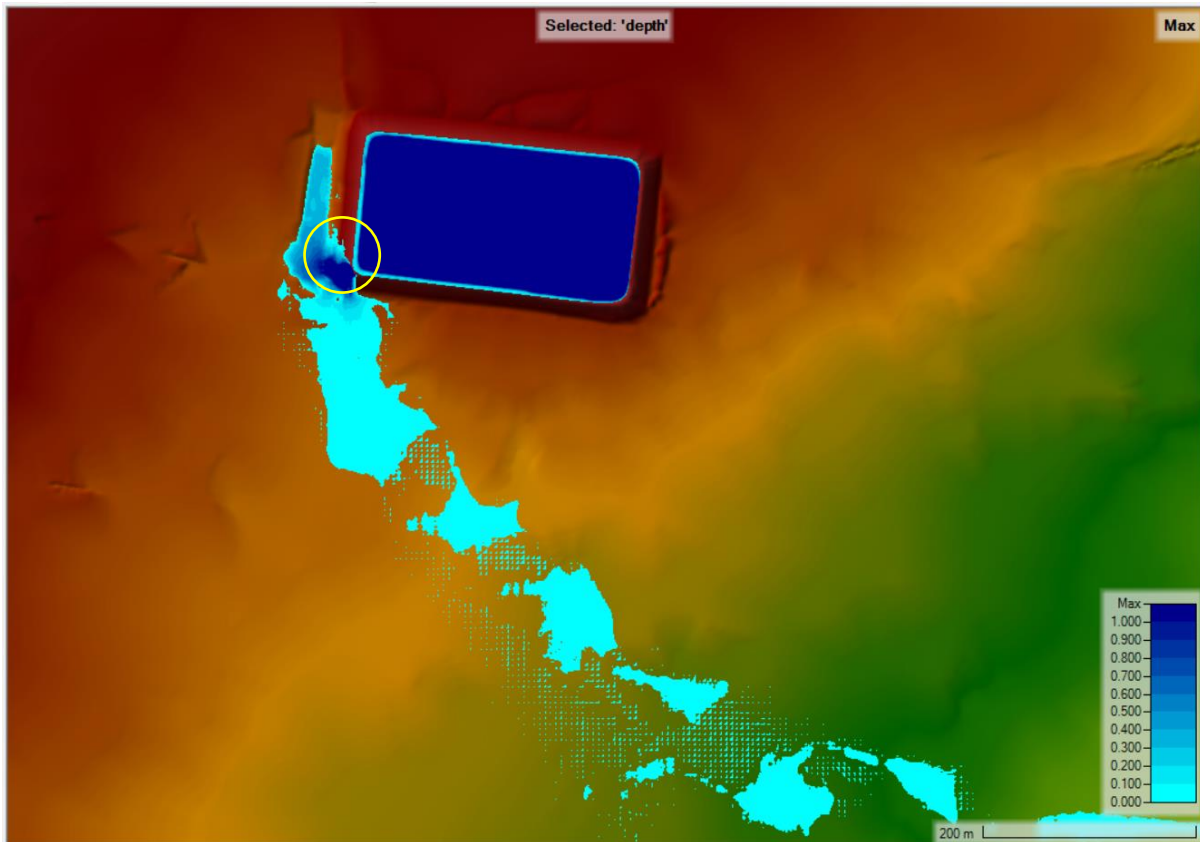


Figure 2 - Flood Level 1 Minute After Dam Break

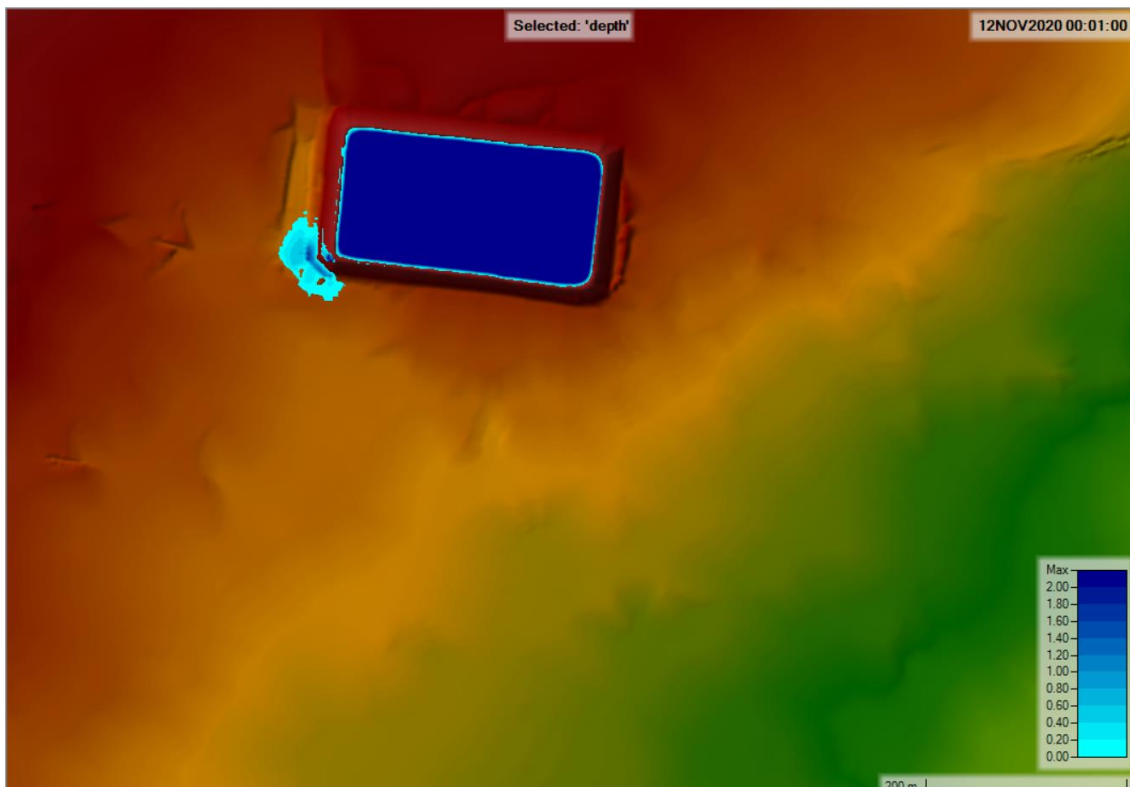


Figure 3 - Flood Level 3 Minutes After Dam Break

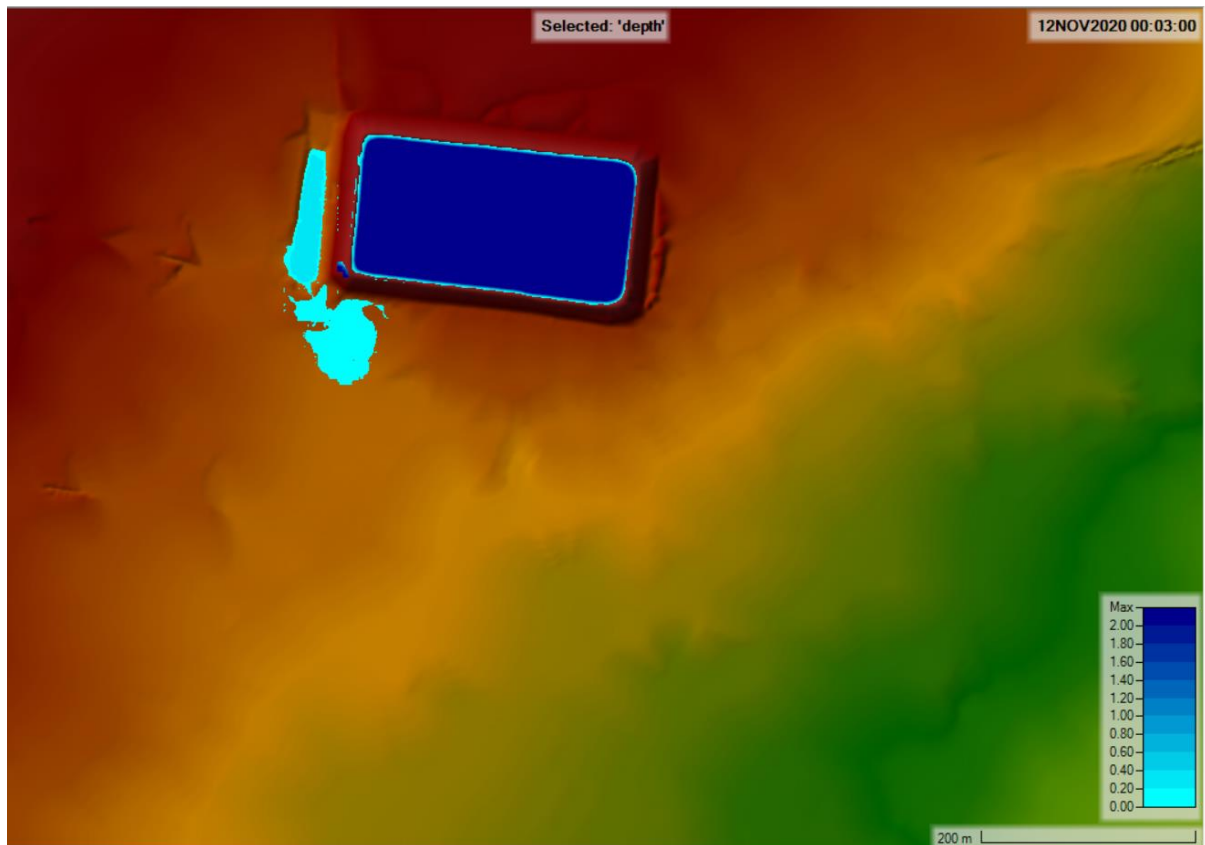


Figure 4 - Flood Level 5 Minutes After Dam Break

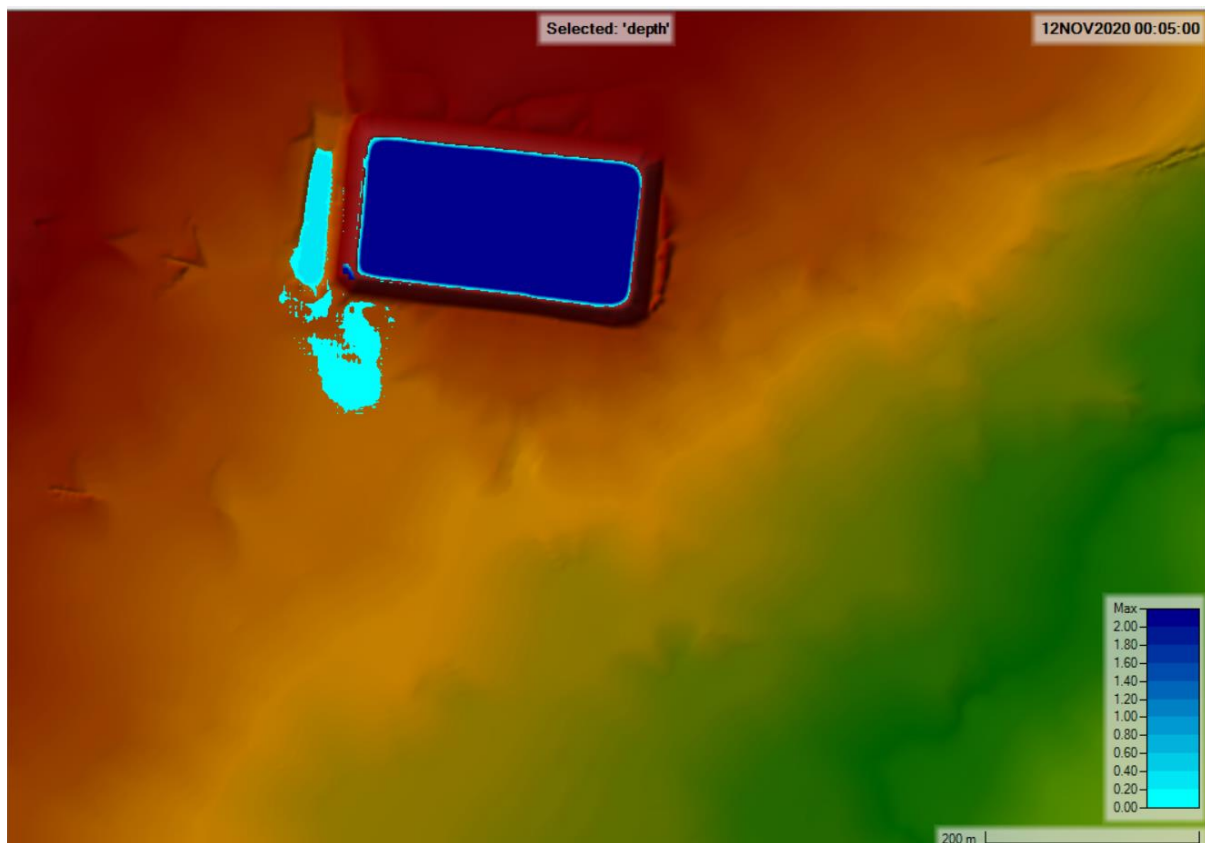


Figure 5 - Flood Level 8 Minutes After Dam Break

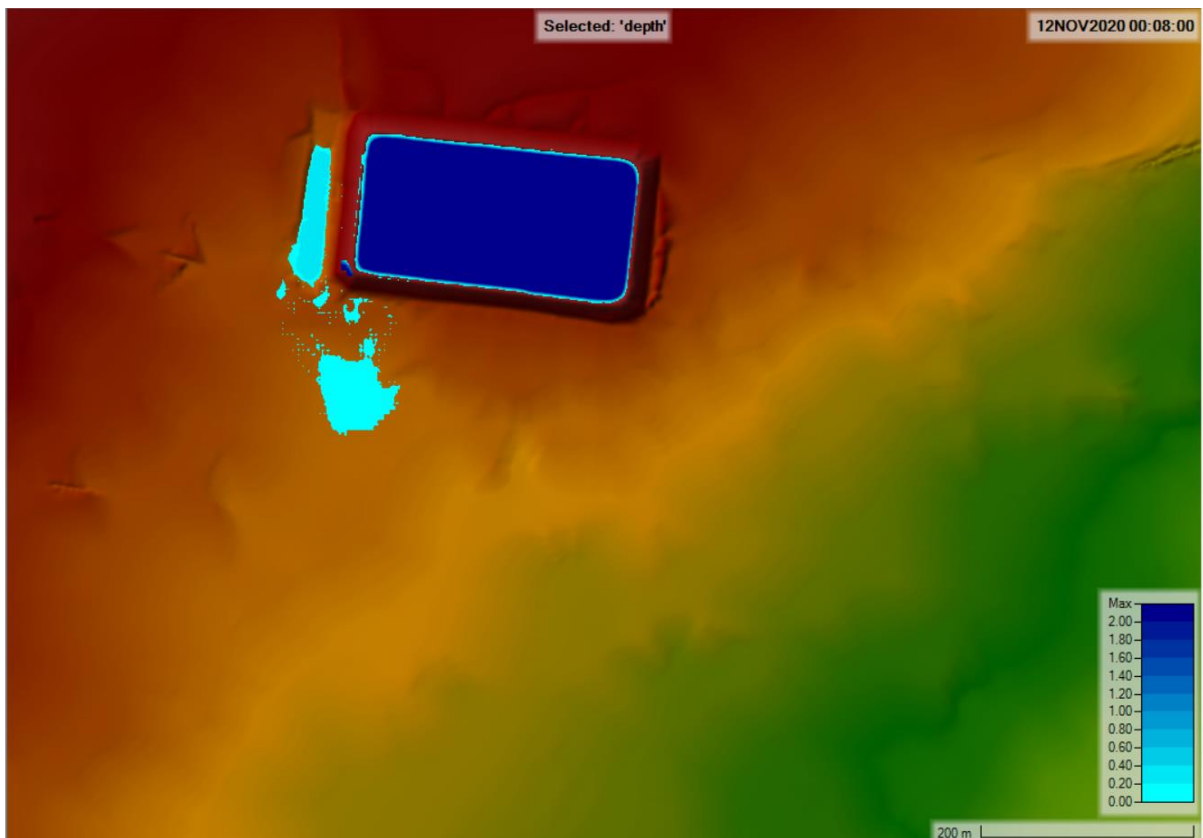


Figure 6 - Flood Level 15 Minutes After Dam Break

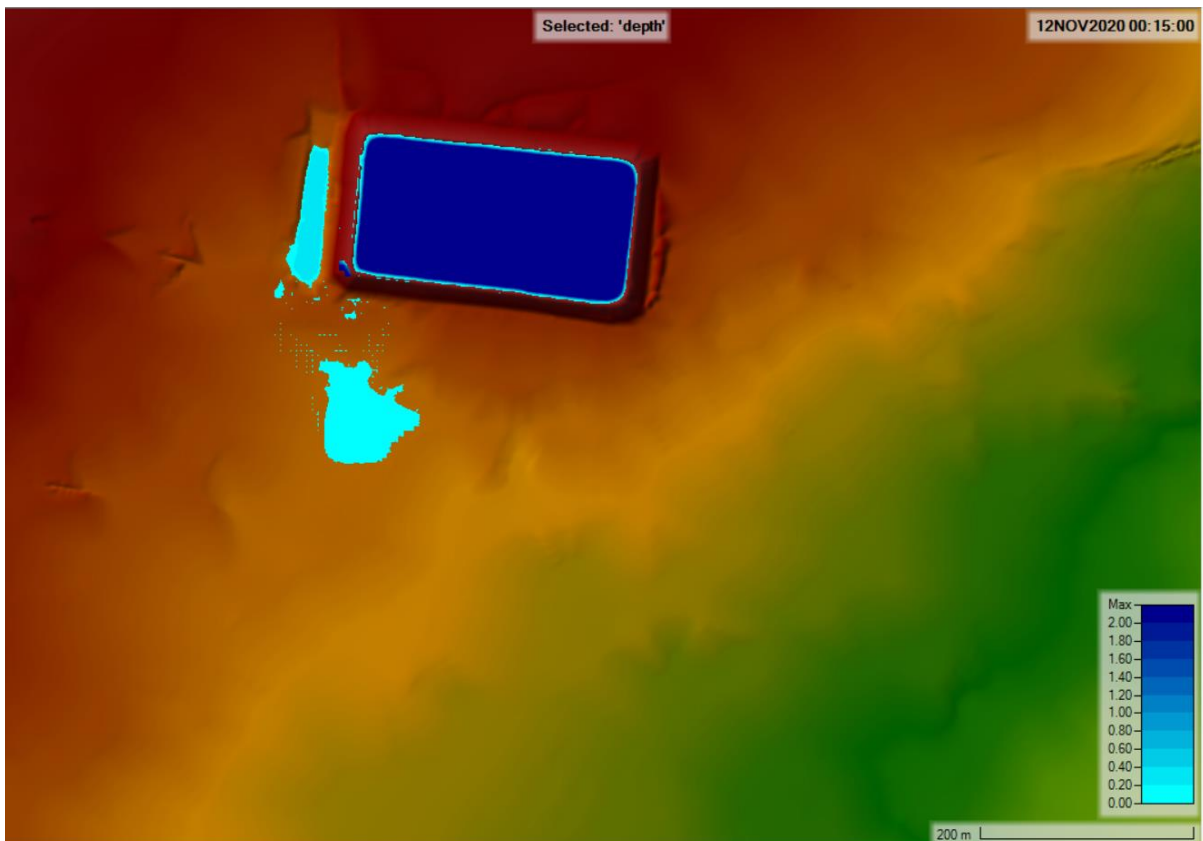


Figure 7 - Flood Level 25 Minutes After Dam Break

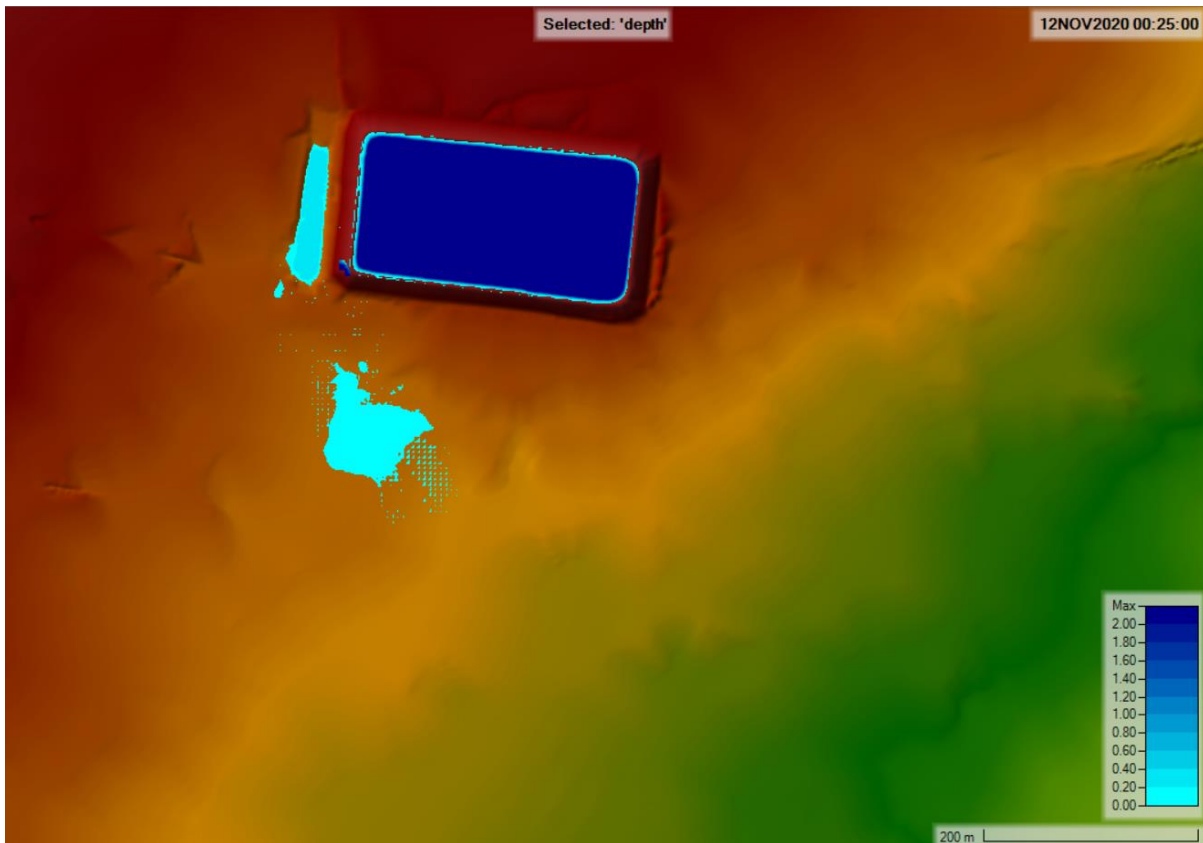


Figure 8 - Flood Level 40 Minutes After Dam Break

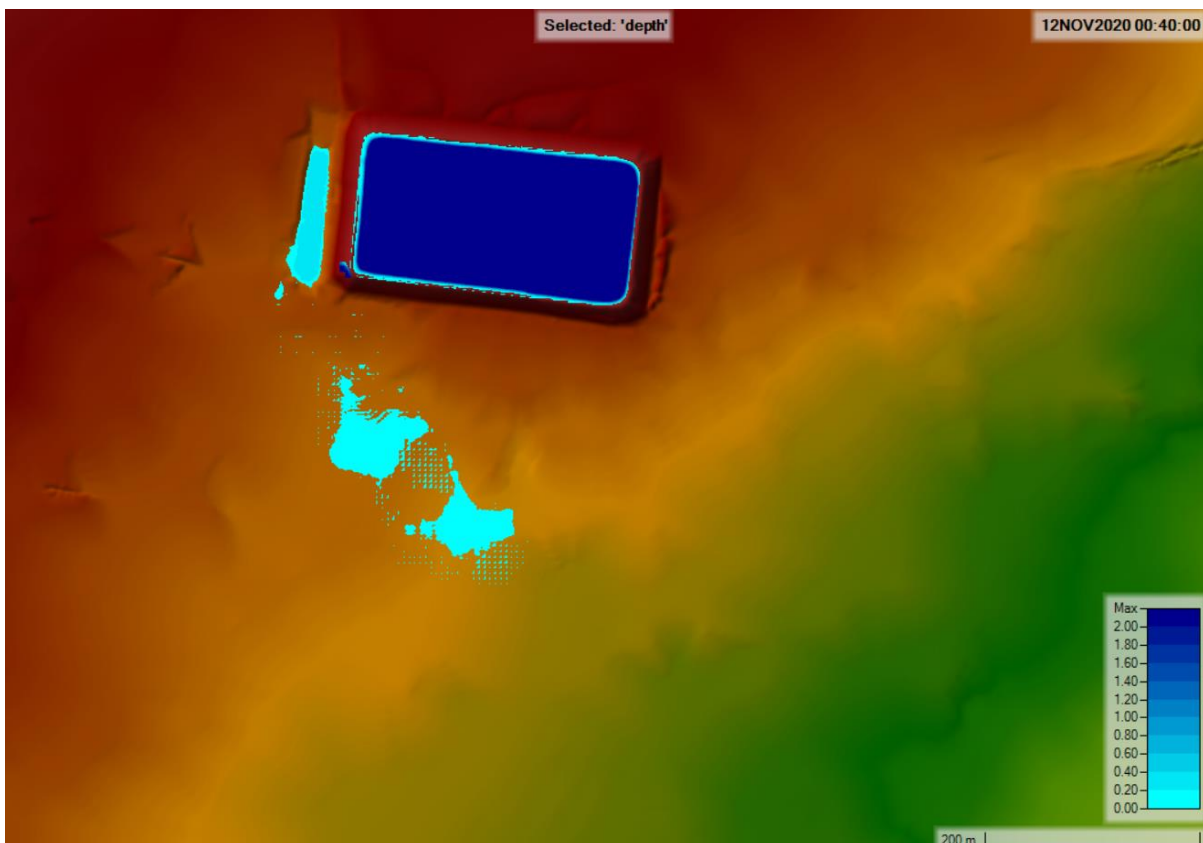


Figure 9 - Flood Level 60 Minutes After Dam Break

