



South Gippsland Basin

Local Water Report 2019-20

Introduction

Welcome to our annual Local Water Report for our South Gippsland customers. This report provides an insight on:

- how our rivers have fared in the last season (2019-20)
- groundwater level trends
- the number of irrigation licences in each of our systems
- how much water irrigators used last season, compared with previous years; and
- emerging local water issues.

What happened with your local rivers last season?

Tarwin River

There were good flows in the river last season, so there was no need for irrigation restrictions.

Tarra River and Griegs Creek

The start of the season was very dry with restrictions from July to August. September through to November the system had steady flows but was back on restrictions from December through to February. Late February the rain came and the Tarra was off restrictions for the remainder of the season.

Tarra River @ Yarram

Stage	Total Days
Stage 1 (100% Roster)	4
Stage 2 (75%)	2
Stage 5 (BAN)	58

Tarra River @ Sth Gippsland Water off-take

Stage	Total Days
Stage 1 (100% Roster)	8
Stage 2 (75%)	1
Stage 5 (BAN)	58

Griegs Creek

Stage	Total Days
BAN	58

Bruthen Creek

Some rain in September helped farmers fill their winter fill dams. It dried off again in early summer but February saw the rain come.

Stage	Total Days
Ban	150

Albert and Jack Rivers

Like the Tarra, a dry start in winter, some rain in spring, drying off again in early summer but an early autumn break came and stayed.

Stage	Total Days
BAN	58

Other river and creek systems

With the below average start to the winter period, irrigation occurred until they were placed on bans from mid-summer when flows dropped off. The rain came in mid-February and no further restrictions were placed.

River water usage

The table below compares last season's usage with the previous four years.

River system	Number of licences *	Licensed volume (ML)*	Total Volume Extracted (ML)				
			2019-20	2018-19	2017-18	2016-17	2015-16
Albert River	41	901.6	112	309	218	187	467
Bass River	28	165.3	37	28	26	0	9
Agnes River	33	409	15	15	11	6	6
Bruthen Creek	25	182	54	36	72	44	50
Franklin River	26	622	97	148	193	164	345
Merrimans Creek	74	938	675	341	431	375	372
Powlett River	25	182	2	4	1	6	15
Tarra River	82	2443	829	950	1,003	707	1,110
Tarwin River	315	4863	812	1,126	1,345	926	1,468
Misc SW Areas	5	284.8	9	13	14	27	43
Total	654	10990.7	2,642	2,970	3,300	2,415	3,842

*Not including farm dam registration licences.

What's happened with your local groundwater?

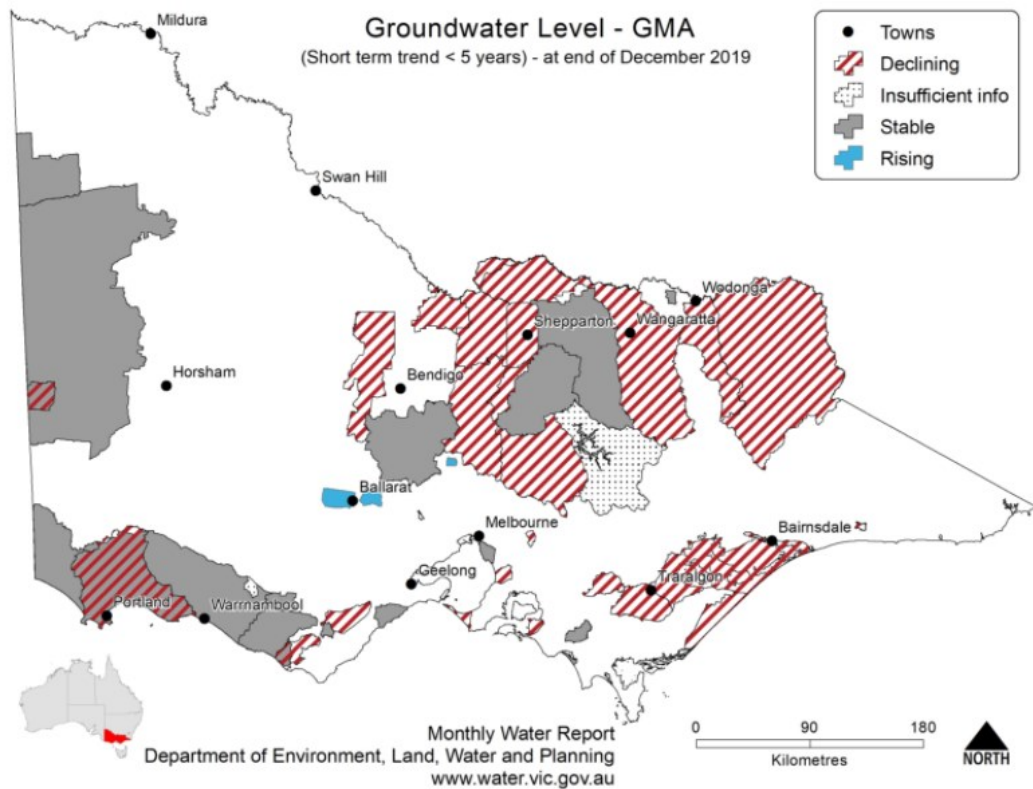
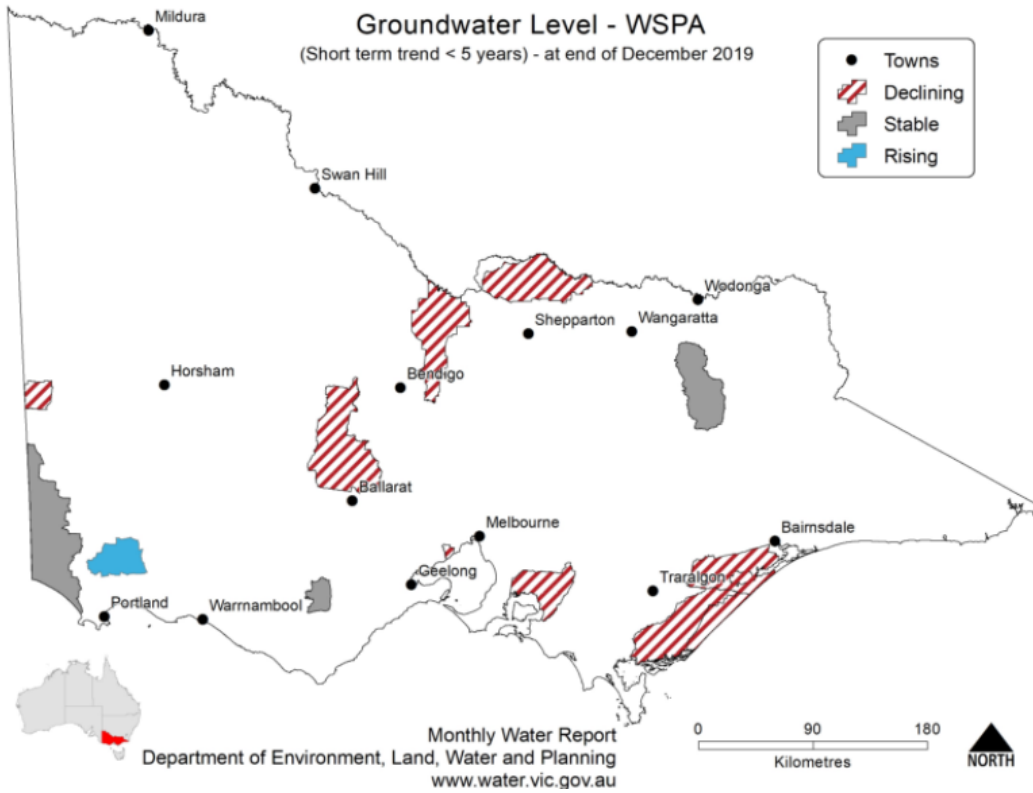
Overview

There are five Groundwater Management Units within the South Gippsland basin - Corinella, Giffard, Leongatha, Tarwin and Yarram.

Corinella and Leongatha are basalt aquifers, Tarwin and Giffard are shallow sand aquifers and Yarram is a deep sand aquifer. The South Gippsland basin is generally covered by the sand or basalt aquifers.

The bedrock aquifer rises to the surface on the Strzelecki Ranges, but has limited quality and yield, and is generally only used for domestic and stock purposes.

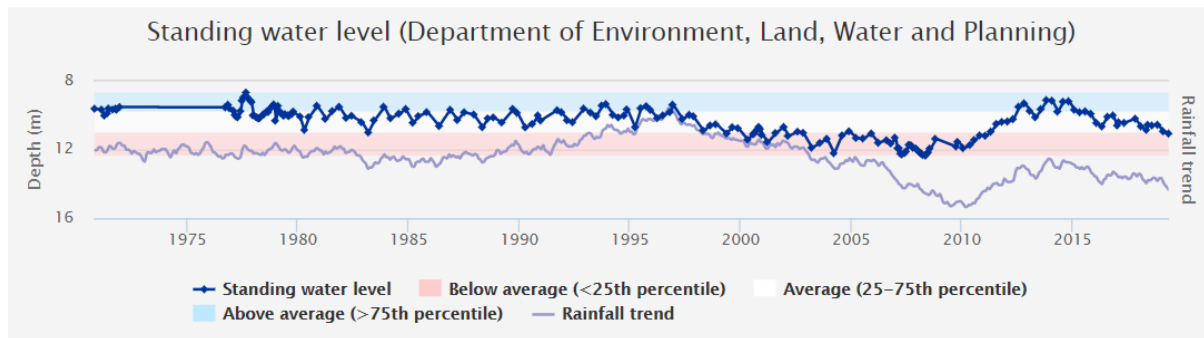
Follow this [link](#) if you would like to know more about groundwater management in your area



Use this [link](#) to view groundwater trends across Victoria.

Corinella

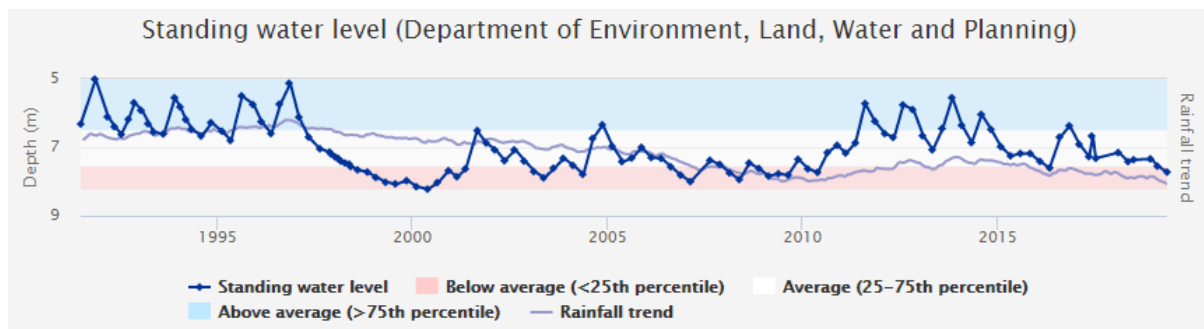
Corinella GMA received 873mm of rain at the Rhyll rain gauge station which was approximately 170mm more than the long term average of 700mm. Groundwater usage last year was 40ML compared to the long term average of 63ML. Average water levels this year are within the long term average (within 25-75th percentile)



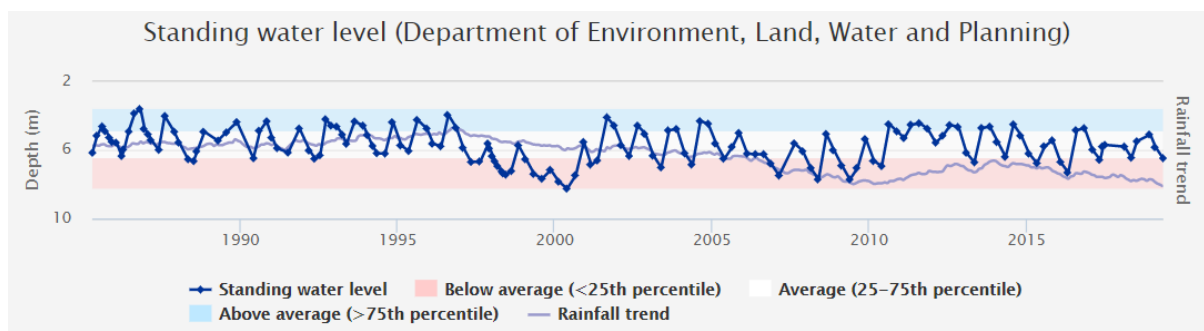
56922 - Stanley Road

Leongatha

Leongatha GMA received 1,330mm of rain at the Korumburra rain gauge station which was approximately 120mm more than the long term average of 1,201mm. Groundwater usage last year was 94ML compared to the long term average of 217ML. Average water levels this year are within the long term average (within 25-75th percentile)



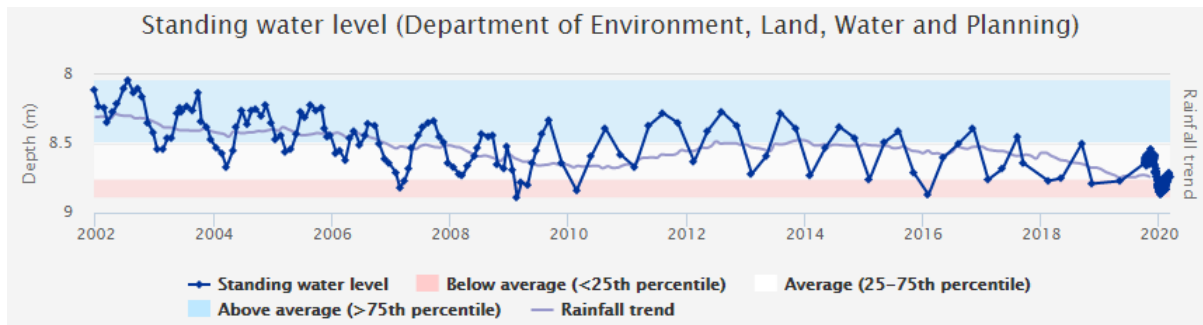
75565 - Old Korumburra Road



75403 - Howards Road

Giffard

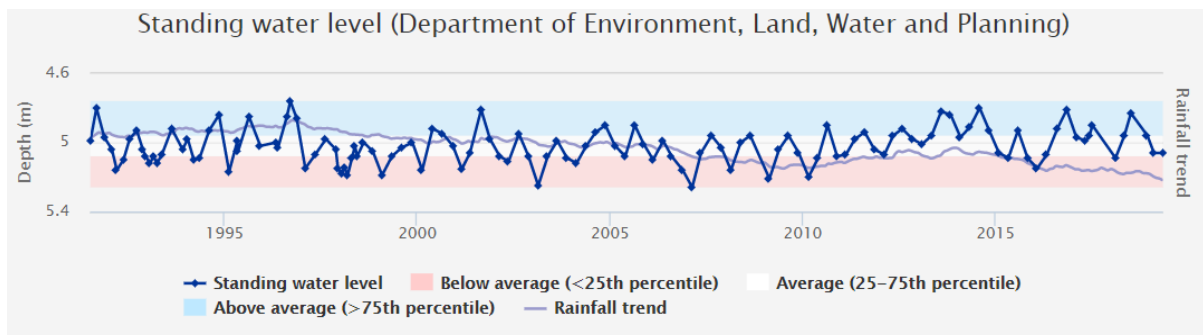
Giffard GMA received 328mm of rain at the Giffard rain gauge station which was approximately 130mm less than the long term average of 563mm. Groundwater usage last year was 5,548ML compared to the long term average of 2,473ML. Water levels this year are average to below average.



145090 – Reeves Beach Road

Tarwin

Tarwin GMA received 1,071mm of rain at the Stony Creek rain gauge station which was approximately 100mm above the long term average of 961mm. Groundwater usage last year was 17ML compared to the long term average of 11ML. Average water levels this year are within the long term average (within 25-75th percentile)



94809 – Paris Crescent

Yarram

The Yarram GMA annual report is available to download [here](#).

To find out more information about the bore depths in your area visit our Groundwater Hub at www.gwhub.srw.com.au

Groundwater figures

The table below compares last season's usage with the previous four years.

Groundwater system	Number of licences	Licensed volume (ML)	Total Volume Extracted (ML)				
			2019-20	2018-19	2017-18	2016-17	2015-16
Corinella GMA	12	661	40	63	56	66	72
Giffard GMA	16	5,429	2,618	5,548	3,784	1,856	2,312
Leongatha GMA	33	1,803	94	149	170	115	206
Tarwin GMA	3	57	10	17	15	5	7
Yarram WSPA	83	25,688	8,194	16,557	14,075	12,246	14,940
Unincorporated*	35	1,377	130	282	217	149	288
Total	182	35,015	11,086	22,616	18,317	14,437	17,825

* within South Gippsland basin

Water trading

The table below shows the number and volume (ML) of water trades. Temporary and permanent volume trades show water trades across different locations, as distinct from ownership changes that are part of land transfers.

Basin / GMU	Permanent trade		Temporary trade	
	Number	Volume (ML)	Number	Volume (ML)
South Gippsland Basin	3	8.3	1	72
Giffard GMA	0	0	3	140
Yarram GMA	1	240	0	0

More information

For more information about rural water use in your area, please contact your local field officer **Dave Lewis on 0427 885 504** or phone Southern Rural Water on 1300 139 510.

Southern Rural Water is publishing local water reports for all basins. You can view these online at our website (www.srw.com.au)

PLEASE DON'T DRINK OUR WATER

ANY water from sources managed or licensed by Southern Rural Water, including irrigation storages, channels, rivers and creeks, groundwater and farm dams, is untreated. It should not be considered safe for human consumption without proper treatment.