



# Latrobe Basin

## Local Water Report 2019-20

### Introduction

Welcome to our annual Local Water Report for our Latrobe Basin customers. This report provides information on:

- how our rivers fared last season (2019-20)
- groundwater level trends;
- the number of irrigation licences in each of our systems;
- how much water irrigators used last season compared with previous years; and
- emerging local water issues.

### What happened with your local rivers last season?

Above average rainfall occurred throughout the catchment during the 2019 -2020 season with no creeks or rivers placed on restriction or ban.

#### Morwell River

Stage	Total Days
Stage 1 (100% with rosters)	0
Stage 2 (75% with rosters)	0
Stage 3 (50% with rosters)	0
Stage 4 (25% with rosters)	0

#### Middle Creek

Stage	Total Days
BAN	0

#### Narracan Creek and Little Naracan

Stage	Total Days
Stage 1 Roster	0
Ban	0

#### Ten Mile Creek

Stage	Total Days
BAN	0

## Moe River

No restrictions occurred.

## Upper Latrobe

No restrictions occurred.

## Rosters and restrictions

When river, creek and groundwater levels drop, we often have to introduce rosters, restrictions or bans to ensure a fair distribution of available water to all licence holders.

You can find your area's hotline number and local management rules by visiting

[www.srw.com.au/customer/rosters-and-restrictions](http://www.srw.com.au/customer/rosters-and-restrictions)

## River water usage

The table below compares last season's usage with the previous four years:

River system <sup>1</sup>	Number of licences	Licensed volume (ML)	Total Volume Extracted (ML)				
			2019-20	2018-19	2017-18	2016-17	2015-16
Little Narracan	28	1524	533	1,091	983	937	1,254
Moe River	44	1014	296	578	529	473	788
Morwell River System	41	4804	956	2,109	1,985	1,835	2,500
Narracan Ck	82	3983	1,319	2,747	2,393	2,222	2,684
Upper Latrobe	43	768	260	411	291	214	253
Latrobe SW	441	13701	95	142	14	27	43
<b>Total<sup>2</sup></b>	<b>679</b>	<b>25,794</b>	<b>3,459</b>	<b>7,078</b>	<b>6,195</b>	<b>5,708</b>	<b>7,522</b>

<sup>1</sup> Does not include farm dam registration licences.

<sup>2</sup> – These figures do not include licences from the Lower Latrobe River which is supported by releases from Blue Rock Dam and are semi-regulated. This approach is consistent with previous years reporting.

## What happened with your local groundwater last season?

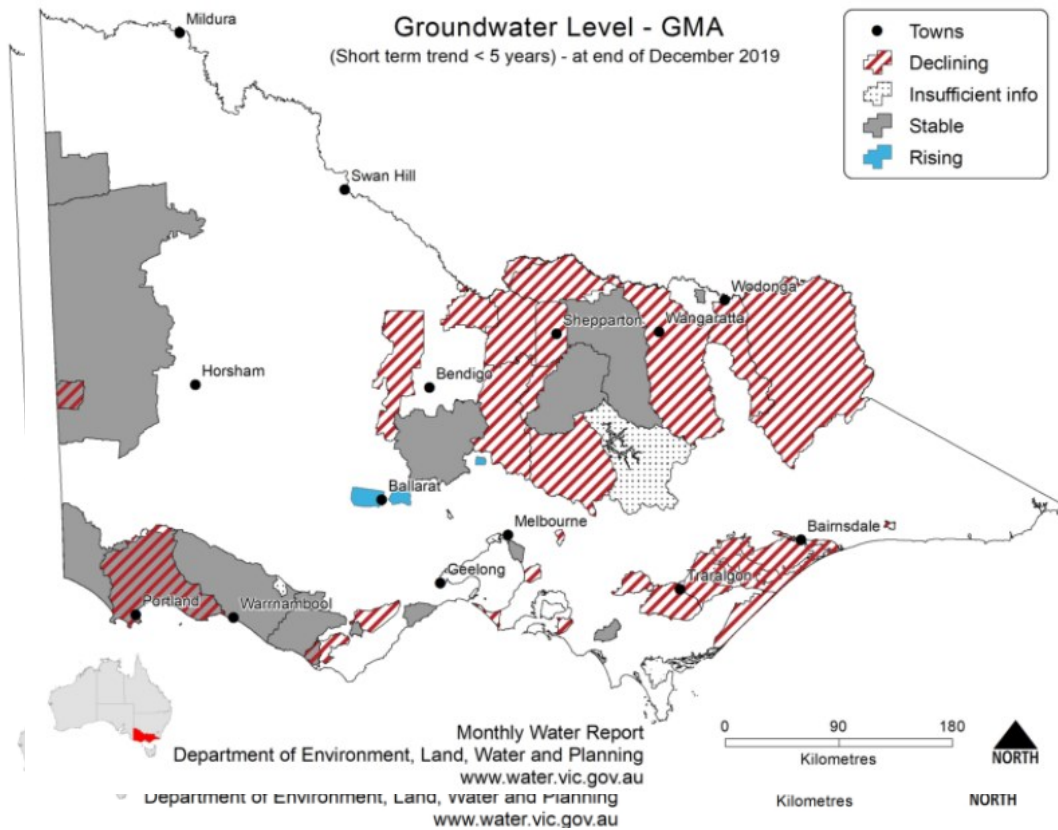
### Overview

There are four Groundwater Management Units in the Latrobe basin - Denison, Moe, Rosedale and Stratford. The Denison and nearby Sale aquifers are sand aquifers, whereas the Moe aquifer is predominantly basalt. Rosedale and Stratford are deeper sand aquifers.

Many of the sand aquifers contain good quality water and can also be high-yielding. A bedrock aquifer covers the highland area of the basin. It has limited quality and yields, and is generally only used for domestic and stock purposes.

The Department of Environment, Land, Water and Planning (DELWP) has State Observation Bore Network coverage in this area.

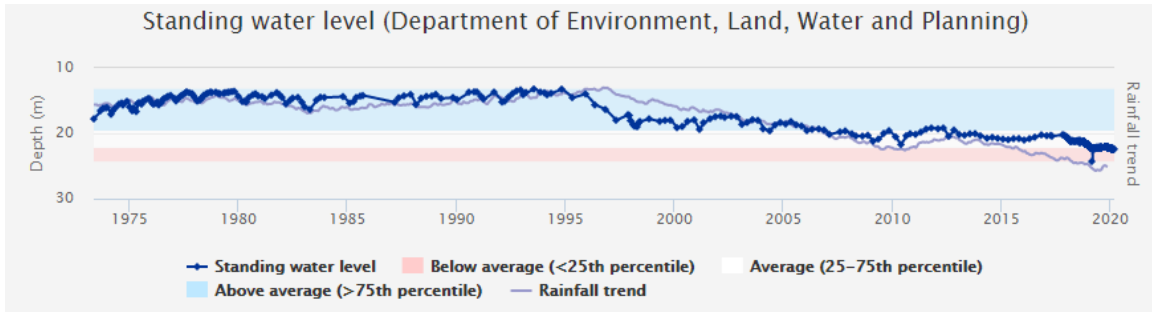
Follow this [link](#) if you would like to know more about groundwater management in your area.



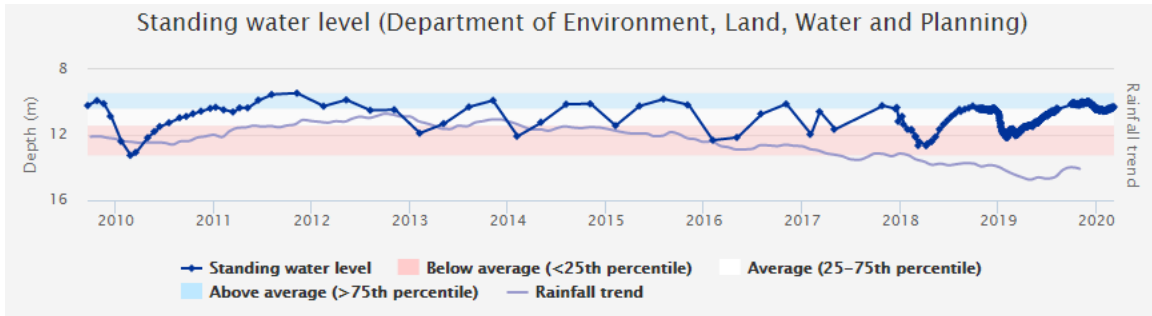
Use this [link](#) to view groundwater trends across Victoria.

## Moe

Moe GMA received 980mm of rain at the Willow Grove rain gauge station which was approximately 70mm more than the long-term average of 911mm. Groundwater usage last year was 567ML compared to the long-term average of 856ML. Average water levels this year are within the long-term average or below.



### 107970 - Millers Road Moe



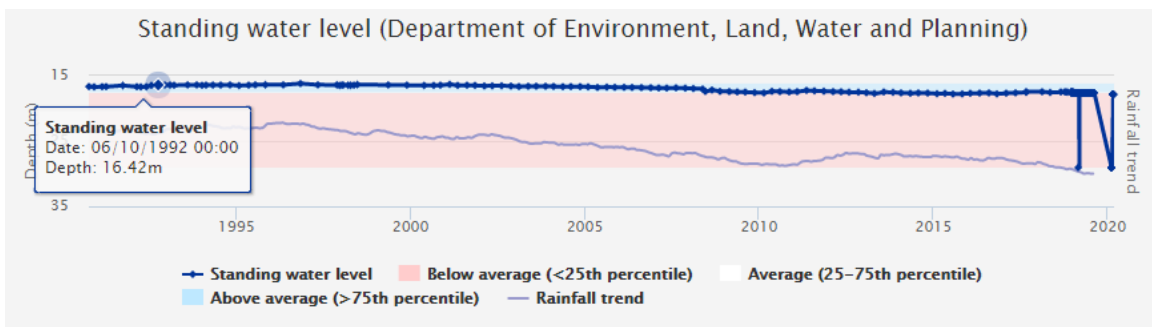
### WRK990055 - Willowgrove Road Moe

## Denison

Denison GMA received 542mm of rain at the Maffra rain gauge station which was approximately 30mm more than the long-term average of 516mm. Groundwater usage last year was 6,088ML compared to the long-term average of 7,251ML.

## Rosedale

Rosedale GMA received 870mm of rain at the Traralgon EPA rain gauge station which was approximately 170mm less than the long-term average of 618mm. Groundwater usage last year was 6,750ML compared to the long-term average of 6,627ML. Average water levels this year are below the long-term average (below 25th percentile)



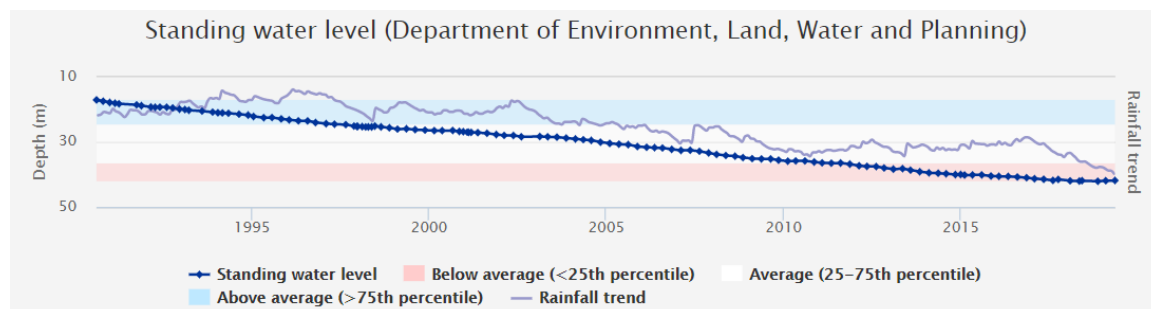
### 103811 – Bowmans Lane

## Stratford

Stratford GMA received 542mm of rain at the Maffra rain gauge station which was approximately 30mm more than the long-term average of 516mm.

Groundwater usage last year was 35ML compared to the 10 year average of 28ML.

Groundwater levels are slowly declining in this deeper aquifer, mainly due to the effects of offshore oil and gas extraction, and also because of Latrobe Valley mine dewatering.



### 47063 – Romawi Road

To find out more information about the bore depths in your area visit

[https://www.vvg.org.au/vvg\\_map.php](https://www.vvg.org.au/vvg_map.php)

## Groundwater figures

The table below compares last season's usage with the previous years.

Groundwater system	Number of licences	Licensed volume (ML)	Total Volume Extracted (ML)				
			2019-20	2018-19	2017-18	2016-17	2015-16
Moe GMA	93	3,619	567	785	904	915	1,222
Denison <sup>2</sup>	114	13,165	6,088	11,191	7,144	6,191	7,048
Rosedale <sup>1,2</sup>	60	12,726	6,750	9,411	7,959	6,713	6,198
Stratford <sup>1,2</sup>	9	836	35	110	18	15	22
Unincorporated	66	3,048	448	651	557	259	515
<b>Total</b>	<b>342</b>	<b>33,394</b>	<b>13,888</b>	<b>1,436</b>	<b>1,461</b>	<b>1,174</b>	<b>1,737</b>

1 Excludes entitlements for power generation 2 Partially contained within the Thomson Basin

## Water trading

The table below shows the number and volume (ML) of water trades. Temporary and permanent volume trades show water trades across different locations, as distinct from ownership changes that are part of land transfers.

1. Previous years water trade ML volumes , numbers and traded price can be found at: <http://waterregister.vic.gov.au/water-trading/take-and-use-licence-trading>

Basin / GMU	Permanent trade		Temporary trade	
	Number	Volume (ML)	Number	Volume (ML)
Moe GMU	0	0	1	30
Denison GMU	0	0	7	926.6
Rosedale GMU	6	353.5	3	280
Stratford GMU	1	50	0	0
Latrobe Basin	8	405.2	19	1230

## More information

For more information about rural water use in your area, please contact your local field officers, **Frank Mannuzza** on **0428 356 508** or **David Lewis** on **0427885504** or contact Southern Rural Water on 1300 139 510.

Southern Rural Water publishes local water reports for all basins. You can view these online at our website [www.srw.com.au](http://www.srw.com.au)

### ***PLEASE DON'T DRINK OUR WATER***

*ANY water from sources managed or licensed by Southern Rural Water, including irrigation storages, channels, rivers and creeks, groundwater and farm dams, is untreated. It should not be considered safe for human consumption without proper treatment.*