



Corangamite Basin Local Local Water Report 2019-20

Introduction

This is our annual Local Water Report for our Corangamite customers. This report provides information on:

- how our rivers fared last season (2019-2020)
- groundwater level trends;
- the number of irrigation licences in each of our systems;
- how much water irrigators used last season, compared with previous years; and
- emerging local water issues.

What happened with local lakes last season?

Lake Purrumbete

Lake Purrumbete levels were again higher than previous seasons due to solid inflows through winter and spring. It has had no bans for the past five years.

Lake Tooliorook

The levels of Lake Tooliorook were above the trigger level for irrigation for the first time in four years. Licence holders were able to access water due to the higher level of inflows into the lake as a result of good autumn and winter rains in the catchment of the lake.

Rosters and restrictions

When river, creek and groundwater levels drop, we often have to introduce rosters, restrictions or bans to ensure a fair distribution of available water to all licence holders.

You can find your area's hotline number and local management rules by visiting www.srw.com.au/customer/rosters-and-restrictions

Surface water figures

River system ¹	Number of licences	Licensed volume (ML)	Total Volume Extracted (ML)				
			2019-20	2018-19	2017-18	2016-17	2015-16
Lake Corangamite	3	96	-	-	-	32	49
Lake Colac	6	113	-	-	-	34	46
Raydion Creek	1	38	-	-	-	42	24
Total – Corangamite Basin Misc (Incl above)²	21	712	102	84	66	108	119

The table above compares last season's usage with the previous four years.

1 - Does not include farm dam registration licences.

2 – Represents change to total basin reporting over the last 2 years.

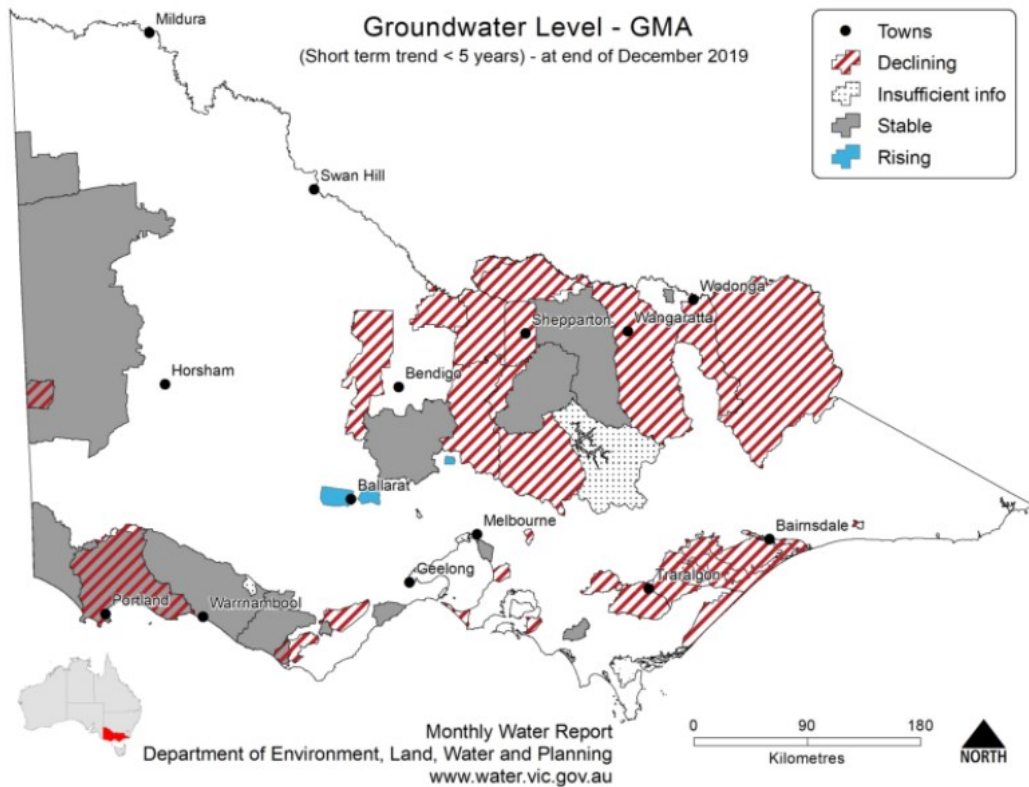
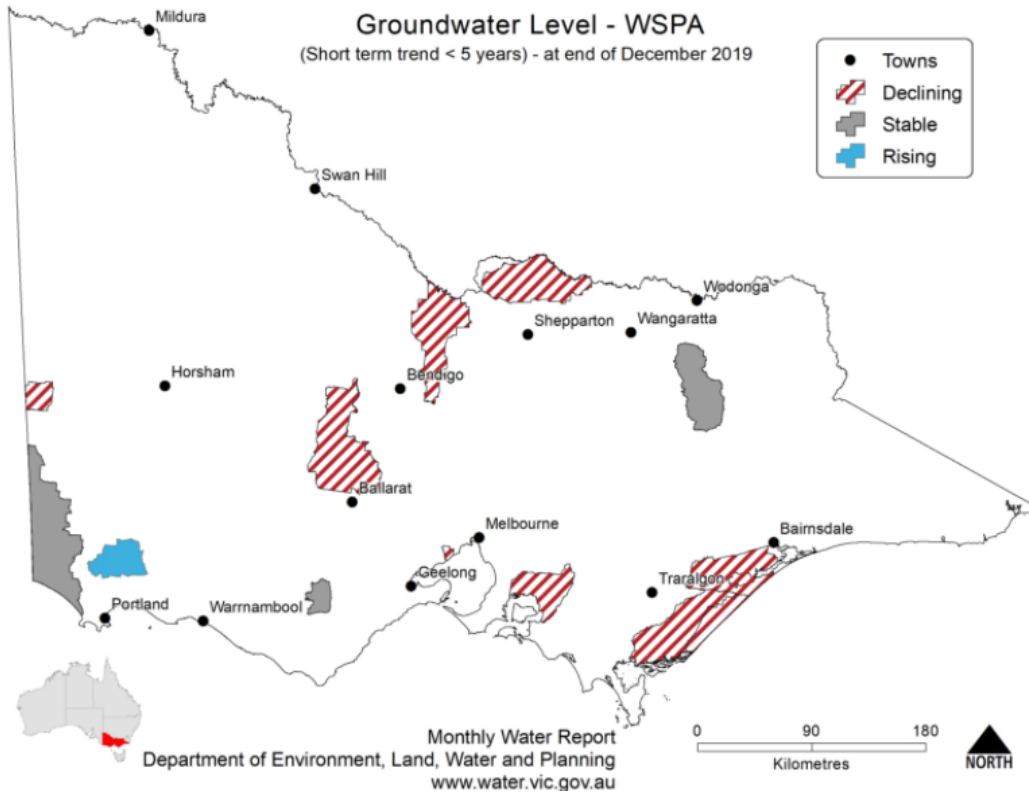
What happened with your local groundwater last season?

Overview

There are two Groundwater Management Units within the Corangamite basin - Colongulac and Warrion. These are basalt aquifers which have varying salinity and yields. Most of the remaining basin is also covered by basalt, but generally salinity is higher and yield is lower than in the management areas.

Within the management areas, groundwater is used for dairy, irrigation and industrial purposes, as well as domestic and stock use.

Follow this [link](#) if you would like to know more about groundwater management in your area.

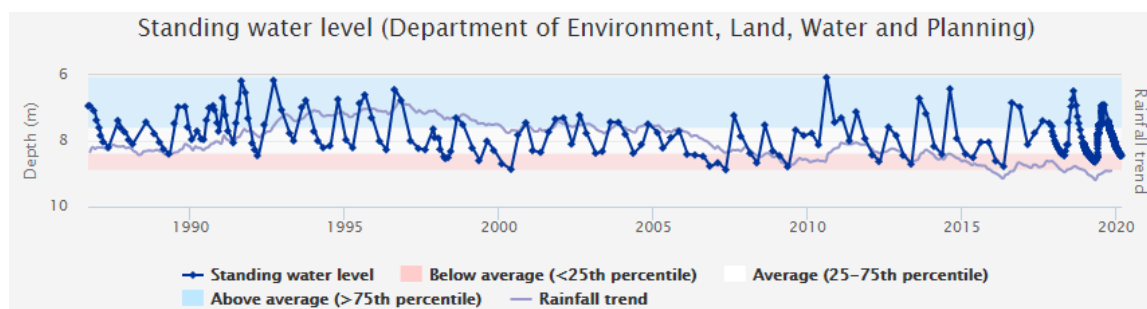


Use this [link](#) to view groundwater trends across Victoria.

Colongulac

Colongulac GMA received 838.mm of rain at the Camperdown rain gauge station which was approximately 70mm more than the long-term average of 771mm.

Groundwater usage last year was 1,138ML compared to the long-term average of 1,127ML. Water levels this year are average to above average.



89040 - Colongulac Pomborneit – Foxhow Road

Warrion

The Warrion Water Supply Protection Area is managed via a groundwater management plan. Annual reporting is a requirement of the plan. The 2019-20 Warrion Groundwater Management Annual Report is available [here](#).

To find out more information about the bore depths in your area visit https://www.vvg.org.au/vvg_map.php

Groundwater figures

Groundwater system	Number of licences	Licensed volume (ML)	Total Volume Extracted (ML)				
			2019-2020	2018-2019	2017-2018	2016-2017	2015-2016
Colongulac GMA	65	4,404	1,138	1,576	1,287	1,244	1,735
Warrion WSPA	131	14,075	2,913	3,854	3,466	3,702	5,348
Unincorporated GMA	51	521	28	40	86	106	87
Total	247	19,000	4,079	5,470	4,839	5,052	7,170

Water trading

Basin / GMU	Permanent trade		Temporary trade	
	Number	Volume (ML)	Number	Volume (ML)
Warrion WSPA	1	13	0	0
Colongulac GMA	0	0	0	0

The table above shows the number and volume (ML) of water trades. Temporary and permanent volume trades show water trades across different locations, as distinct from ownership changes that are part of land transfers.

Previous years water trade ML volumes, numbers and traded price can be found [here](#).

More information

For more information about rural water use in your area, please contact your local field officer **Anja Jeddi** on **0418 201 052** or phone Southern Rural Water on 1300 139 510.

Southern Rural Water publishes local water reports for all basins. You can view these online at our website www.srw.com.au/

PLEASE DON'T DRINK OUR WATER

ANY water from sources managed or licensed by Southern Rural Water, including irrigation storages, channels, rivers and creeks, groundwater and farm dams, is untreated. It should not be considered safe for human consumption without proper treatment.