



Safe Drinking Water Act 2003

Water Storage Manager Annual Report 2014/15

20 October 2015

Document Status



SRW
 PO Box 153
 MAFFRA VIC 3860
 Tel: 1300 139 510
 Fax: 03 5139 3150

| | |
|-------------------|---|
| Name of Document: | Safe Drinking Water Storage Manager Annual Report 2014/15 |
| File Name: | Safe Drinking Water Annual report 2014_15 Final |
| Document Version: | Draft |
| Date of issue: | 20 October 2015 |
| Approved by: | Clinton Rodda, Managing Director |

Document history

| Issue | Revision | Prepared By | Reviewed By | Date |
|--------------|----------|-------------|---------------|------------------|
| First draft | 1 | Jessica Cox | Craig Smith | 12 August 2015 |
| Second draft | 2 | Jessica Cox | Craig Smith | 2 September 2015 |
| Final draft | 3 | Jessica Cox | Clinton Rodda | 4 September 2015 |
| Final | 4 | Jessica Cox | Craig Smith | 20 October 2015 |

Contents

| | |
|---|-----------|
| Foreword | 2 |
| 1 Introduction | 3 |
| 1.1 Our business | 3 |
| 1.2 Our water supply systems | 4 |
| 2 Water Treatment and Quality Management Systems | 6 |
| 2.1 Water treatment..... | 6 |
| 2.2 Issues..... | 6 |
| 3 Emergency / Incident Management | 7 |
| 3.1 Incidents under section 22 of the Act | 7 |
| 3.2 Other Incidents | 7 |
| 4 Audit Findings | 9 |
| 5 Undertakings under section 30 of the Act | 10 |
| 6 Further Information | 11 |

Foreword

Southern Rural Water (SRW), as a water storage manager, is required under Section 26 of the *Safe Drinking Water Act 2003* (the Act) to provide the Secretary to the Department of Health and Human Services (DHHS) with a report each financial year. This report covers issues relating to the quality of untreated water and its management by SRW.

This 2014/2015 annual report covers the period from 1 July 2014 to 30 June 2015 and was developed in accordance with the Safe Drinking Water Regulation Guidance Note released by the DHHS in June 2015, and with regulation 15 of the Safe Drinking Water Regulations 2005.

1 Introduction

1.1 Our business

SRW's Headworks business is responsible for the harvest, storage and delivery of water to customers in accordance with the provisions of the Bulk Entitlement Orders.

We are responsible for harvesting and storing water in seven major storages. These include:

- Lake Glenmaggie, Lake Narracan and Blue Rock Lake which are located in Gippsland; and,
- Melton, Merrimu, Pykes Creek and Rosslynne Reservoirs which are located to the west of Melbourne.

The Headworks business also manages the recreational facilities at most of these storages. There is however, no primary contact recreation permitted at Merrimu and Rosslynne Reservoirs.

SRW stores untreated water which is used for:

- Irrigation and rural purposes;
- Urban water supply to Gippsland Water and Western Water; and,
- Industry including power generation in the Latrobe Valley.

Under the Safe Drinking Water Act, SRW is a water storage manager that supplies water to a water supplier. This report therefore focuses on SRW's role in providing untreated water to Gippsland Water and Western Water.

Lake Glenmaggie and Blue Rock Lake provide raw drinking water to Gippsland Water while Merrimu, Pykes Creek and Rosslynne Reservoirs provide raw drinking water to Western Water.

For the purposes of this report, 'raw drinking water' means untreated water harvested in SRW's storages and released to urban water suppliers.

The Board of SRW approved in May 2005 a raw drinking water policy that sets out what our reservoir based risk management plans are designed to implement. The policy was reviewed and updated in June 2012.

The policy states we shall:

- Take responsibility for our role as a water storage manager in the overall delivery of safe drinking water. We will improve the awareness and performance of our staff to minimise or prevent contamination of water in its storages;
- Use a risk-based approach where potential threats to raw drinking water are identified and managed;
- Report information relating to identified risks and issue to our stakeholders in a timely manner;
- Support research and development activities to improve understanding of water quality issues, especially issues related to catchment management to improve future management decisions;
- Ensure that this policy is understood and maintained by relevant staff and is freely available to all customers and members of the wider community.

During 2014/15, we continued the implementation of our risk management plans for storages harvesting untreated water for drinking.

We maintained our Blue Green Algae (BGA) communication to the public, including detailed BGA web pages, with general information on BGA, an up-to-date alert and media releases web page, as well as a dedicated BGA information line.

SRW is committed to working in partnership with stakeholders and relevant agencies to ensure that its decision-making and actions effectively support the supply of safe drinking water by water suppliers, as defined in the *Safe Drinking Water Act 2003*.

1.2 Our water supply systems

SRW operates four water supply systems that involve the supply of raw water to water suppliers. Detail of these four systems is included in Table 1.

Table 1: SRW water supply systems

| System | Catchments | Storage | Supply points/ Offtakes | Urban Water Supplier |
|---------------------------|---|-----------------------|---|----------------------|
| Werribee system | Lake Merrimu (Lerderberg River) | Merrimu Reservoir | Offtake @ tower (valve house) | Western Water |
| | Lake Merrimu (Goodmans Creek) Lake Merrimu Pykes Creek Reservoir and Werribee River | Pykes Creek Reservoir | Offtake @ tower (valve house) | |
| Rosslynne system | Rosslynne Reservoir (Jackson Creek) | Rosslynne Reservoir | Offtake @ tower (valve house) | Western Water |
| Thomson/Macalister system | Lake Glenmaggie | Lake Glenmaggie | Offtake to: Glenmaggie/ Coongulla @ Coongulla (in storage variable depth offtake line) Maffra, Stratford & Boisdale @ 15 km downstream of storage on Macalister River | Gippsland Water |
| Blue Rock system | Tanjil River | Blue Rock Lake | Offtake to: Willowgrove @ tower Moondarra Reservoir @ tower Moe @ 15km downstream on Tanjil River | Gippsland Water |

Each supply system, from catchment to the offtake to water supplier, is detailed in its related risk management plan. Maps of each SRW specific system have been

reproduced in Appendices 1 to 4 of this annual report. All systems have associated proclaimed catchments as listed in Table 1 and detailed in the appendices.

2 Water Treatment and Quality Management Systems

2.1 Water treatment

- ***15 (2) (d) “a summary of the process by which the water supplied by the water storage manager is disinfected or treated and any other processes applied to the water by the water storage manager, and any issues arising out of the application of these processes”.***
- ***15 (2) (e) “a list of all the chemicals and other substances, and any processes, used by a water storage manager to disinfect or treat the water supplied, or to be supplied, by it for drinking purposes;”***

SRW does not treat the water prior to its receipt by Western Water and Gippsland Water.

2.2 Issues

SRW does not use chemicals, substances or any process to disinfect or treat the water that it stores or supplies into its irrigation districts. Consequently, there are no issues to report.

3 Emergency / Incident Management

- **15(2)(a)**“*information about actions taken by the water storage manager in respect of each emergency, incident or event that has arisen that has affected –*
 - i. The quality of the water supplied for drinking purposes generally; and*
 - ii. The quality of the water supplied where that supply posed a risk to human health.”*

3.1 Incidents under section 22 of the Act

SRW had no reportable incidents in 2014/15 under section 22 of the Act.

3.2 Other Incidents

Under Department of Environment, Land, Water and Planning’s (DELWP) BGA Circular 2014/15, SRW is obliged to notify agencies such as urban water suppliers, the Environment Protection Authority (EPA) and DELWP of BGA blooms in storages and water bodies where we have Local Water Manager responsibilities. In addition, DHHS must be notified under Section 22 of the Act if contamination, such as a BGA bloom or a high turbidity event, occurs in a water body providing drinking water supply, where that event or bloom is likely to pose a health risk or cause widespread complaint.

However the BGA Circular 2014/15 acknowledges that since water storage managers do not generally treat and supply drinking water to the public in Victoria, they may not be best placed to determine whether BGA levels pose a public health at risk to drinking water supplies. This means that the water supplier (as defined under the Act) may be the most appropriate entity to notify DHHS of BGA incidents under Section 22.

SRW provides Gippsland Water, Western Water, DELWP and DHHS with the results of its BGA monitoring program.

There were two incidents in 2014/15 where BGA blooms exceeded level 2 for drinking water. These are summarised in Table 2.

Both Western Water and DHHS were notified of the incidents. However, Western Water advised that suitable operational procedures (e.g. sourcing alternative supply, altering the off-take level) and/or treatment processes were used which effectively negated the need for a Section 22 notification to DHHS. No issues arose from actions taken.

Table 2: Incidents where notification was made to stakeholders

| Location of Incident | Nature of Incident | Drinking water supply potentially affected | Date and Duration of Incident | Actions taken in response to incident (including communications) |
|---|--------------------------|--|--------------------------------------|---|
| Pykes Creek outlet sampling site | BGA Bloom Alert Level 2* | Myrniong township | 30/3/2015 – 13/4/2015 2 weeks | Routine notification sent to DELWP ¹ , MW ² and WW ³ . Additional weekly sampling was conducted. Fortnightly sampling continued as part of routine monitoring program. |
| Pykes Creek outlet and leeward sampling sites | BGA Bloom Alert Level 2* | Myrniong township | 20/4/2015 – 6/7/2015 11 weeks | Routine notification sent to DELWP, MW and WW. Additional weekly sampling was conducted. Fortnightly sampling continued as part of routine monitoring program. |
| BGA Bloom Alert Level 2 is a Level 2 Drinking Water trigger specified in DELWP's Sample Risk Management Plan and adopted in SRW's BGA Incident Management Plan. | | | | |

¹ Department of Environment Land, Water and Planning

² Melbourne Water

³ Western Water

4 Audit Findings

- ***15(2)(f) a summary of the findings of the most recent risk management plan audit and any issues that the approved auditors raised during the risk management plan audit.***

SRW was not required to undertake a regulatory audit during 2014-15.

5 Undertakings under section 30 of the Act

(c) a summary of every -

(ii) written undertaking by the water storage manager accepted by the Secretary under section 30 of the Act.

SRW did not have any undertakings under Section 30 of the Act with the DHHS during the reporting period.

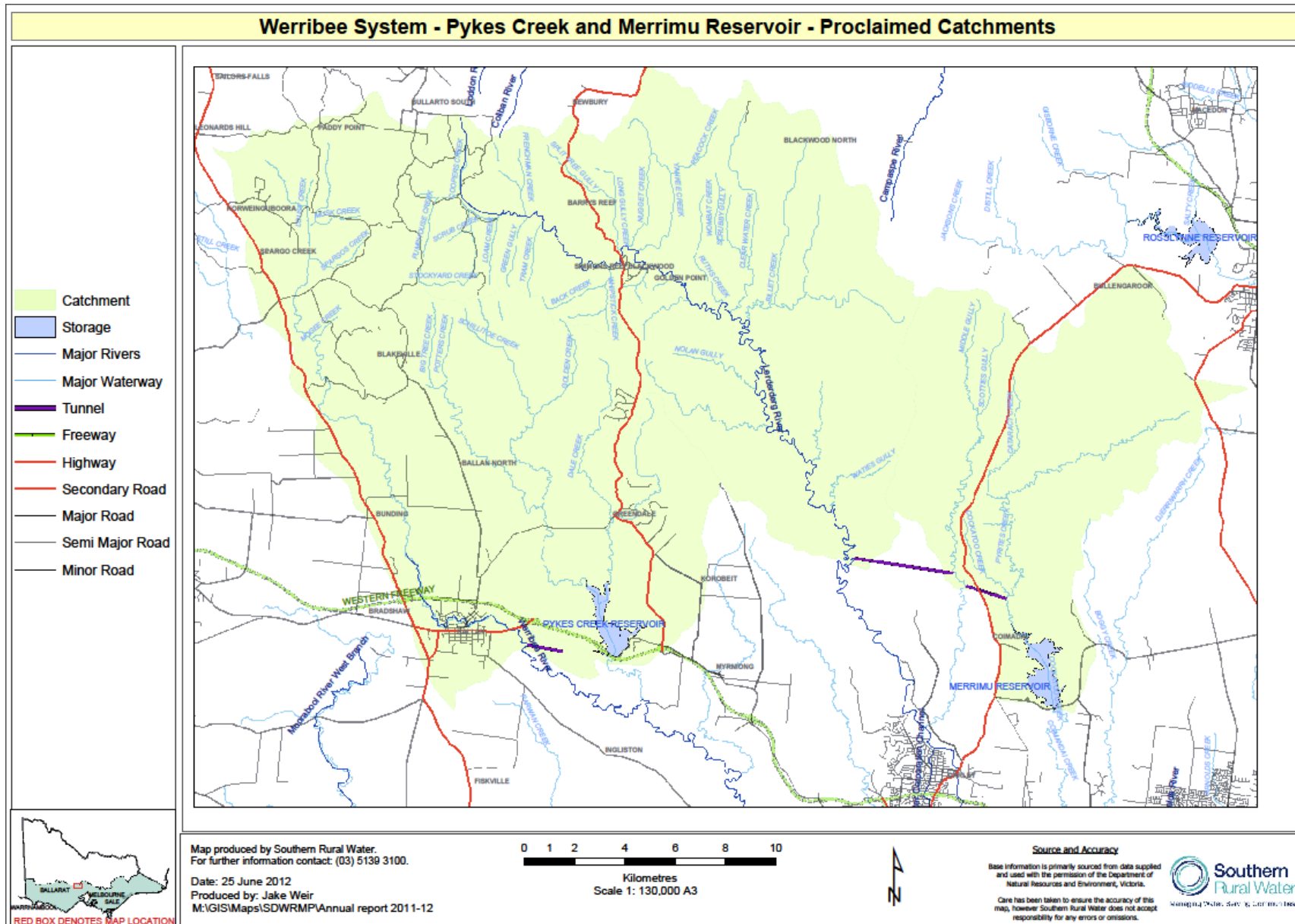
6 Further Information

Further information regarding SRW's responsibilities for BGA reporting, routine monitoring that is undertaken, current alerts and media releases, together with general information can all be found at SRW's website www.srw.com.au. This information is updated as required.

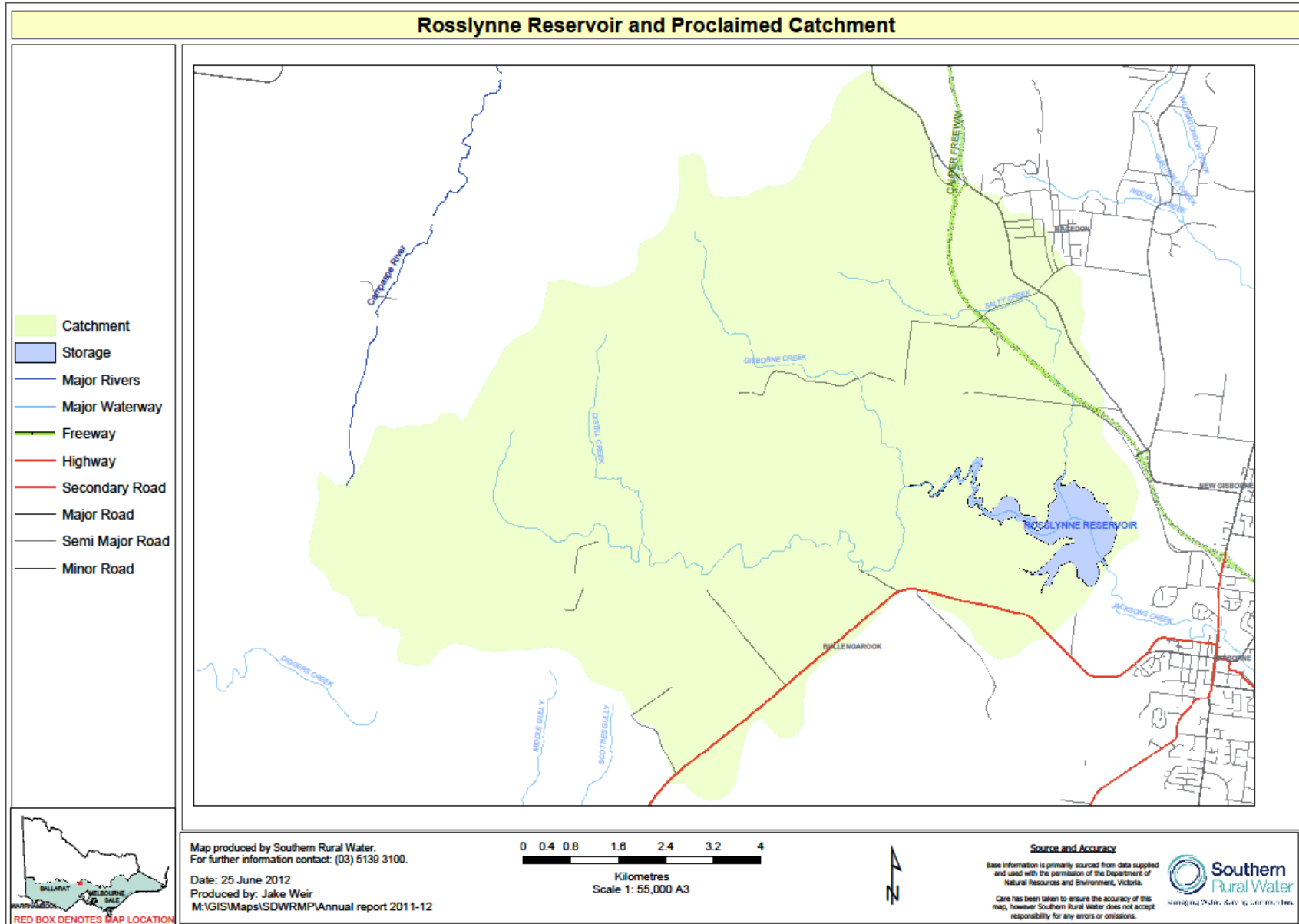
Members of the public can also access current bloom information by calling our dedicated BGA Information Line on 1300 781 806.

In addition, SRW can be contacted directly during business hours by email srw@srw.com.au or by telephone (03) 5139 3100.

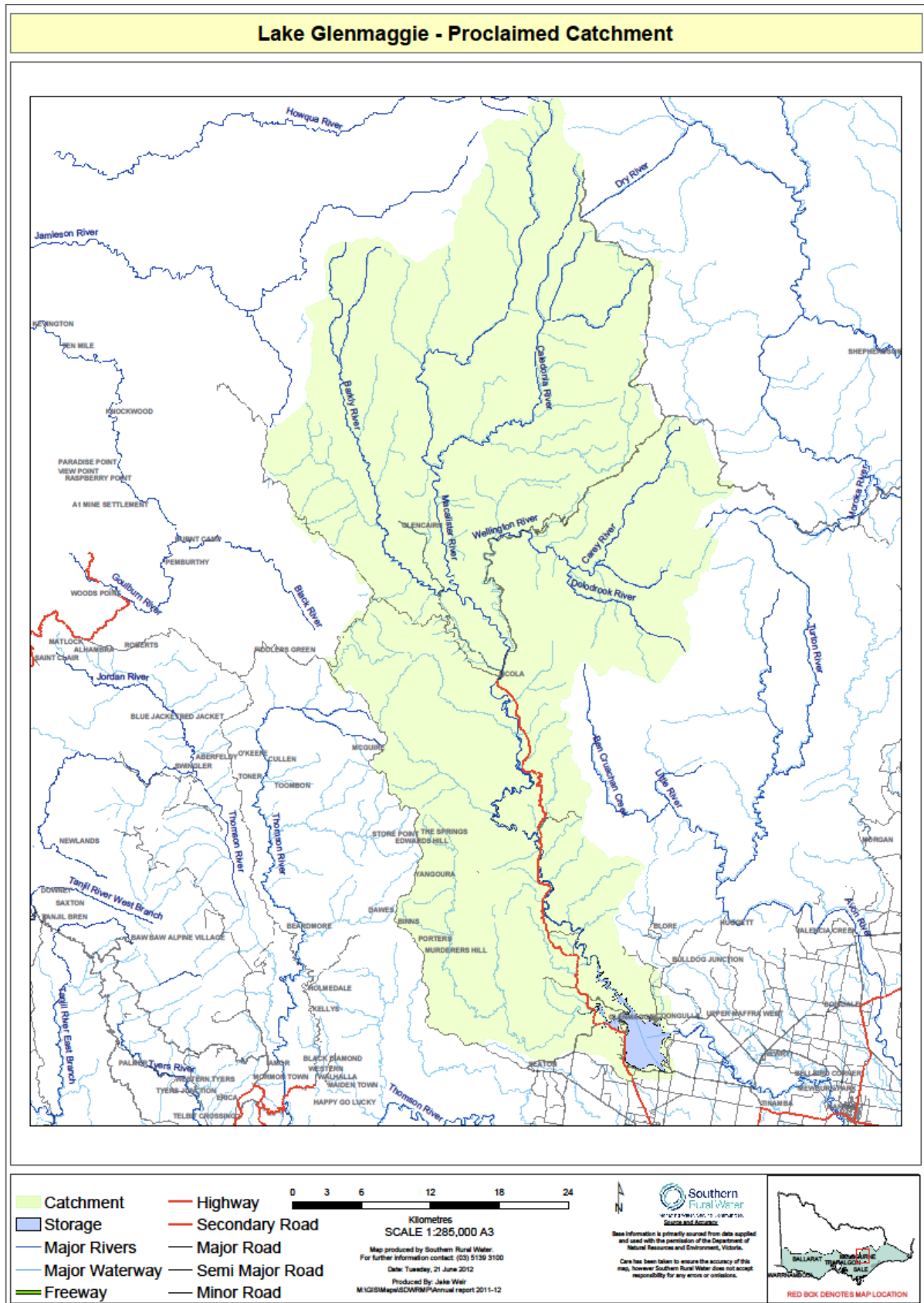
Appendix 1: Merrimu Reservoir, Pykes Creek Reservoir and associated Proclaimed Catchments



Appendix 2: Rosslyne Reservoir Proclaimed Catchment



Appendix 3: Lake Glenmaggie Proclaimed Catchment



Appendix 4: Blue Rock Lake and Tanjil River Proclaimed Catchment

