

# Werribee Maribyrnong Basin – Local Water Report 2019

## Introduction

This is our annual Local Water Report for our Werribee and Maribyrnong customers. This report provides information on:

- how our rivers fared last season (2018-19);
- groundwater level trends;
- the number of irrigation licences in each of our systems;
- how much water irrigators used last season compared with previous years;
- and
- emerging local water issues.

## What's happened with your local rivers?

### Werribee

The Werribee and Lerderderg systems experienced slightly below average rainfall towards the latter part of the season. Restrictions were implemented on the Lerderderg River from 10 January 2018 and remained in place for the remainder of the season.

Stage	Total days on Restriction/ Ban
Lerderderg River System	171

The above table show the restrictions for the 2018-19 season.

### Maribyrnong

The Maribyrnong Catchment was also stressed from the below average rainfall over the summer months. Creeks in the Maribyrnong Catchment (including Deep Creek and the Riddell's Creek System) started declining in late December. Stream levels were closely monitored however restrictions were required in January 2018 and also remained in place for the season.

The Turitable and Willimigongon Creeks were subject to a Water Shortage Declaration from early January.

Stage	Total days on Restriction/ Ban
Maribyrnong, Riddell's Creek system	171

The above table shows the restrictions for the 2018-19 season:

<sup>1</sup>Does not include farm dam registration licences.

## Surface water figures

River system <sup>1</sup>	Number of licences #	Licensed volume (ML)#	Total Volume Extracted (ML)				
			2018-19	2017-18	2016-17	2015-16	2014-15
Maribyrnong	102	1555	90	117	42	120	194
Werribee	35	884	12	27	8	5	5
Jacksons Creek	22	343	11	8	12	6	22
<b>Totals</b>		<b>2782</b>	<b>113</b>	<b>152</b>	<b>62</b>	<b>131</b>	<b>221</b>

The table above compares last season's usage with the previous four years.

<sup>1</sup>Does not include farm dam registration licences

## What happened with your local groundwater this season?

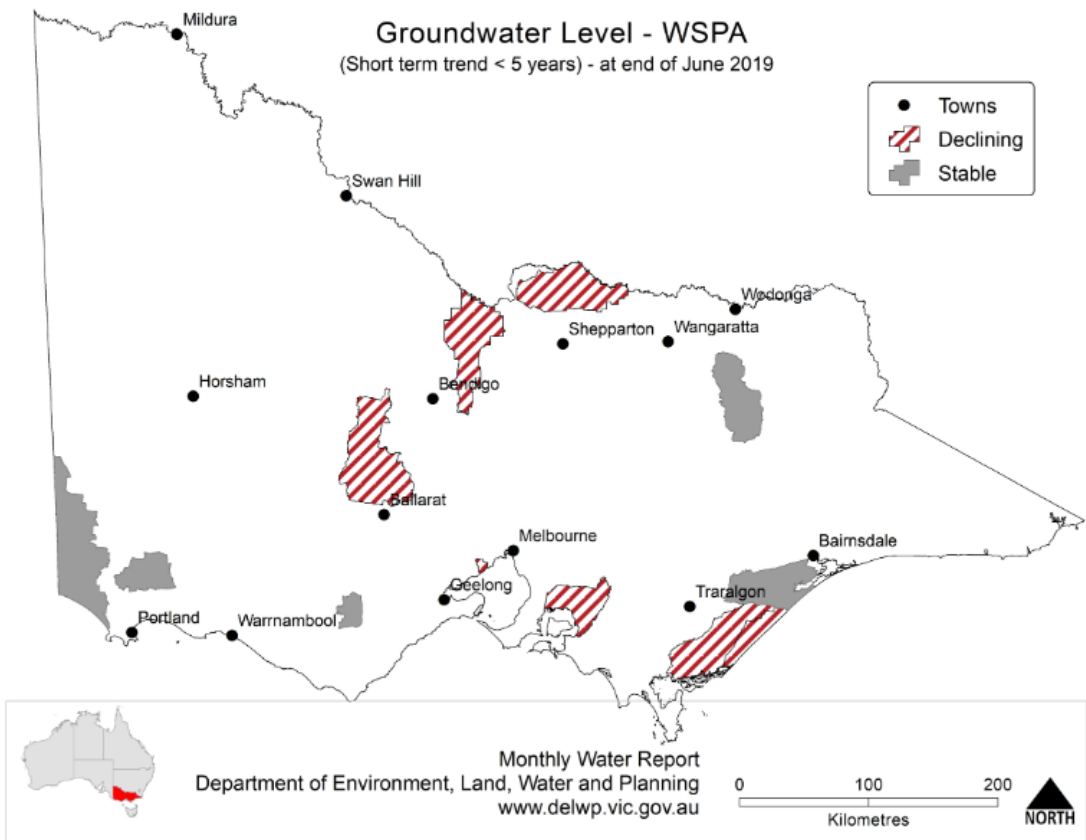
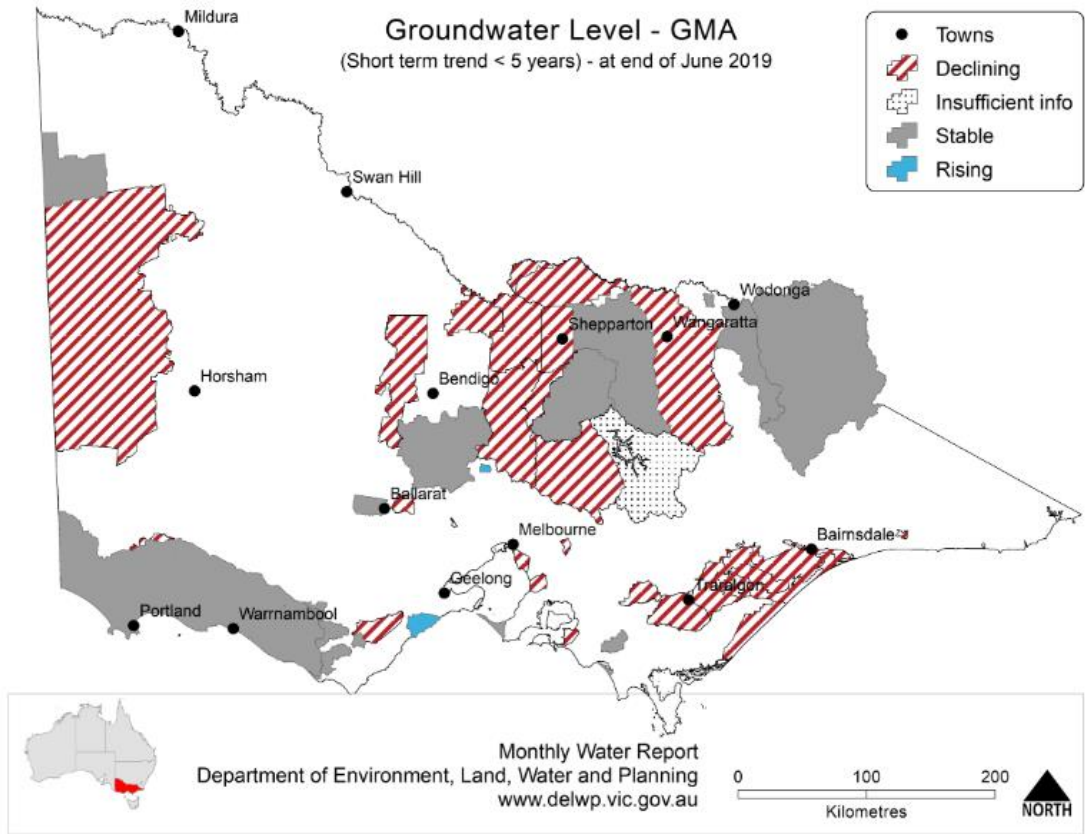
### Overview

There are four groundwater management units within the Maribyrnong and Werribee basins (Cut Paw Paw, Deutgam, Lancefield and Merrimu). The Deutgam and Merrimu aquifers are thin shallow alluvial deposits that are associated with river valleys, and Lancefield is a basalt aquifer.

The deeper Werribee Formation aquifer is also present within the Merrimu and Cut Paw Paw management areas. The bedrock aquifer covers part of the basin, has limited quality and yields, and is generally only used for domestic and stock purposes.

The Department of Environment, Land, Water and Planning (DELWP) has State Observation Bore Network coverage in this area.

Follow this [link](#) if you would like to know more about groundwater management in your area.



Use this [link](#) to view groundwater trends across Victoria.

## Cut Paw Paw

Cut Paw Paw GMA received 406mm of rain at the Flemington Racecourse rain gauge station which was approximately 180mm less than the long term average of 588mm.

Groundwater usage last year was 0ML compared to the long term average of 119ML. There are no active monitoring bores within Cut Paw Paw GMA

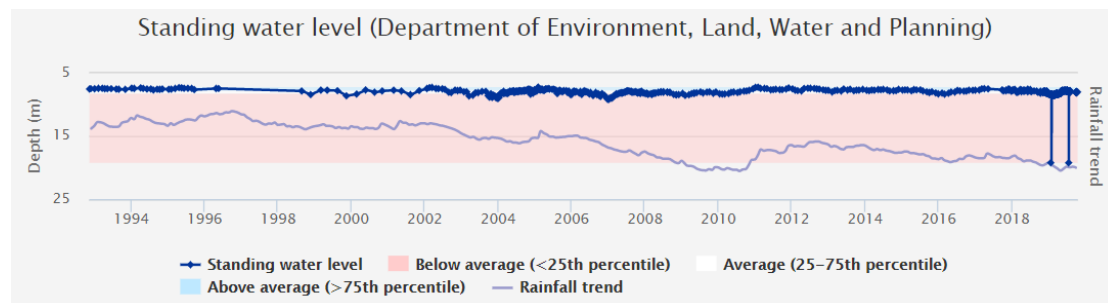
## Deutgam

Deutgam GMA received 420mm of rain at the Laverton RAAF rain gauge station which was approximately 110mm less than the long term average of 534mm.

Groundwater usage last year was 796ML compared to the long term average of 761ML.

Water levels this year are average to below average.

Allocations for the 2018/19 season were 50% of licenced volume.

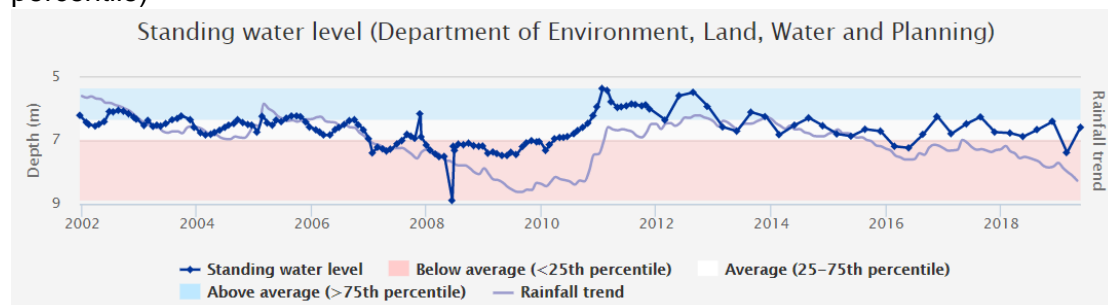


[112803](#) - Near Cuttriss Road Deutgam

## Merrimu

Merrimu GMA received 502mm of rain at the Merrimu Reservoir rain gauge station which was the same as the long term average of 502mm.

Groundwater usage last year was 0ML compared to the long term average of 128ML. Average water levels this year are within the long term average (within 25-75th percentile)



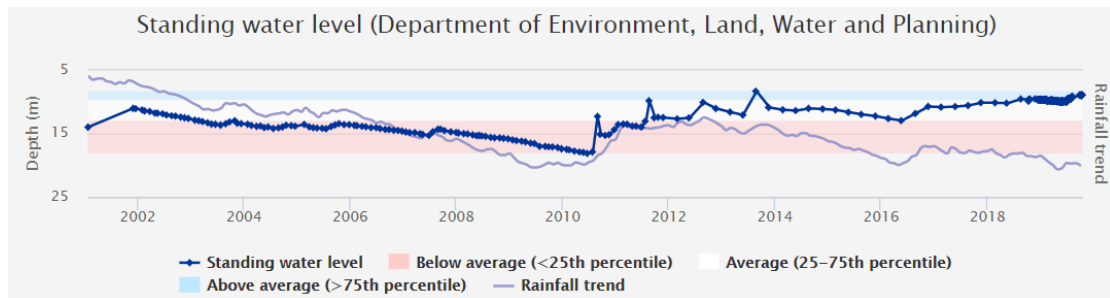
[144972](#) – Woolpack Road

## Lancefield

Lancefield GMA received 580mm of rain at the Romsey rain gauge station which was approximately 135mm less than the long term average of 715mm.

Groundwater usage last year was 282ML compared to the long term average of 321ML.

Average water levels this year are above the long term average (above 75th percentile)



[144979](#) - Collivers Road Lancefield

To find out more information about the bore depths in your area visit [https://www.vvg.org.au/vvg\\_map.php](https://www.vvg.org.au/vvg_map.php)

### Groundwater figures

The table below compares last season's usage with the previous years.

Groundwater system	Number of licences	Licensed volume (ML)	Total Volume Extracted (ML)				
			2018-19	2017-18	2016-17	2015-16	2014-15
Deutgam WSPA	145	4,981	796	912	527	1,278	1,406
Lancefield GMA	14	1,368	282	339	192	80	269
Merrimu GMA <sup>1</sup>	2	10	0	0	0	319	343
Cut Paw Paw GMA	3	511	0	18	26	65	246
Unincorporated	124	6,557	1017	961	1,043	1,500	1,757
Parwan GMA	24	1822	918	575	695	541	281
<b>Totals</b>	<b>312</b>	<b>15,249</b>	<b>3013</b>	<b>2,805</b>	<b>2,484</b>	<b>3,783</b>	<b>4,302</b>

<sup>1</sup>When Parwan GMA was established, most of the Merrimu entitlement was reallocated to this GMA, following a review of bore depths/geology

## Water trading

The table below shows the number and volume (ML) of water trades. Temporary and permanent volume trades show water trades across different locations, as distinct from ownership changes that are part of land transfers.

Previous years water trade ML volumes , numbers and traded price can be found at: <http://waterregister.vic.gov.au/water-trading/take-and-use-licence-trading>

Basin / GMU	Permanent trade		Temporary trade	
	Number	Volume (ML)	Number	Volume (ML)
Deutgam WSPA	0	0	5	70.5
Lancefield GMA	0	0	0	0
Merrimu GMA	0	0	0	0
Cut Paw Paw GMA	0	0	0	0
Werribee Basin	0	0	0	0
Maribyrnong Basin	2	158	0	0

### More information

For more information about rural water use in your area, please contact your local Field Officer **Alisha Clark** on **0411 107 810** or phone Southern Rural Water on 1300 139 510.

Southern Rural Water is publishing local water reports for all basins. You can view these online at our website ([www.srw.com.au](http://www.srw.com.au))

### ***PLEASE DON'T DRINK OUR WATER***

ANY water from sources managed or licensed by Southern Rural Water, including irrigation storages, channels, rivers and creeks, groundwater and farm dams, is untreated. It should not be considered safe for human consumption without proper treatment.