

# South Gippsland Basin – Local Water Report 2019

## Introduction

Welcome to our annual Local Water Report for our South Gippsland customers. This report provides an insight on:

- how our rivers have fared in the last season (2018-19);
- groundwater level trends;
- the number of irrigation licences in each of our systems;
- how much water irrigators used last season, compared with previous years; and
- emerging local water issues.

## What happened with your local rivers last season?

### Tarwin River

There were good flows in the river last season, so there was no need for irrigation restrictions.

### Tarra River and Griegs Creek

September through to early December the system has good flows. From mid-January until June most of the system was on restrictions for season.

#### Tarra River @ Yarram

Stage	Total Days
Stage 1 (100% Roster)	4
Stage 2 (75%)	2
Stage 5 (BAN)	65

#### Tarra River @ Sth Gippsland Water off-take

Stage	Total Days
Stage 1 (100% Roster)	8
Stage 2 (75%)	1
Stage 5 (BAN)	68

#### Griegs Creek

Stage	Total Days
BAN	19

## Bruthen Creek

This creek was on ban from 31 October and has not yet been lifted. Some rain in September helped farmers fill their winter fill dams.

Stage	Total Days
Ban	215

## Albert and Jack Rivers

Irrigators could water until mid-January. Both rivers were placed ban in late January and were not lifted.

Stage	Total Days
BAN	148

## Other river and creek systems

Below average start to the autumn /winter period, irrigation occurred until they were placed on bans from mid-summer when flows dropped off.

## River water usage

The table below compares last season's usage with the previous four years.

River system	Number of licences *	Licensed volume (ML)*	Total Volume Extracted (ML)				
			2018-19	2017-18	2016-17	2015-16	2014-15
Albert River	41	901.6	309	218	187	467	350
Bass River	28	165.3	28	26	0	9	53
Agnes River	33	409	15	11	6	6	12
Bruthen Creek	25	182	36	72	44	50	63
Franklin River	26	622	148	193	164	345	252
Merrimans Creek	74	938	341	431	375	372	409
Powlett River	25	182	4	1	6	15	9
Tarra River	82	2443	950	1,003	707	1,110	908
Tarwin River	315	4863	1,126	1,345	926	1,468	859
Misc SW Areas	5	284.8	13	14	27	43	29
<b>Total</b>	<b>654</b>	<b>10990.7</b>	<b>2,970</b>	<b>3,300</b>	<b>2,415</b>	<b>3,842</b>	<b>2,915</b>

\*Not including farm dam registration licences.

# What's happened with your local groundwater?

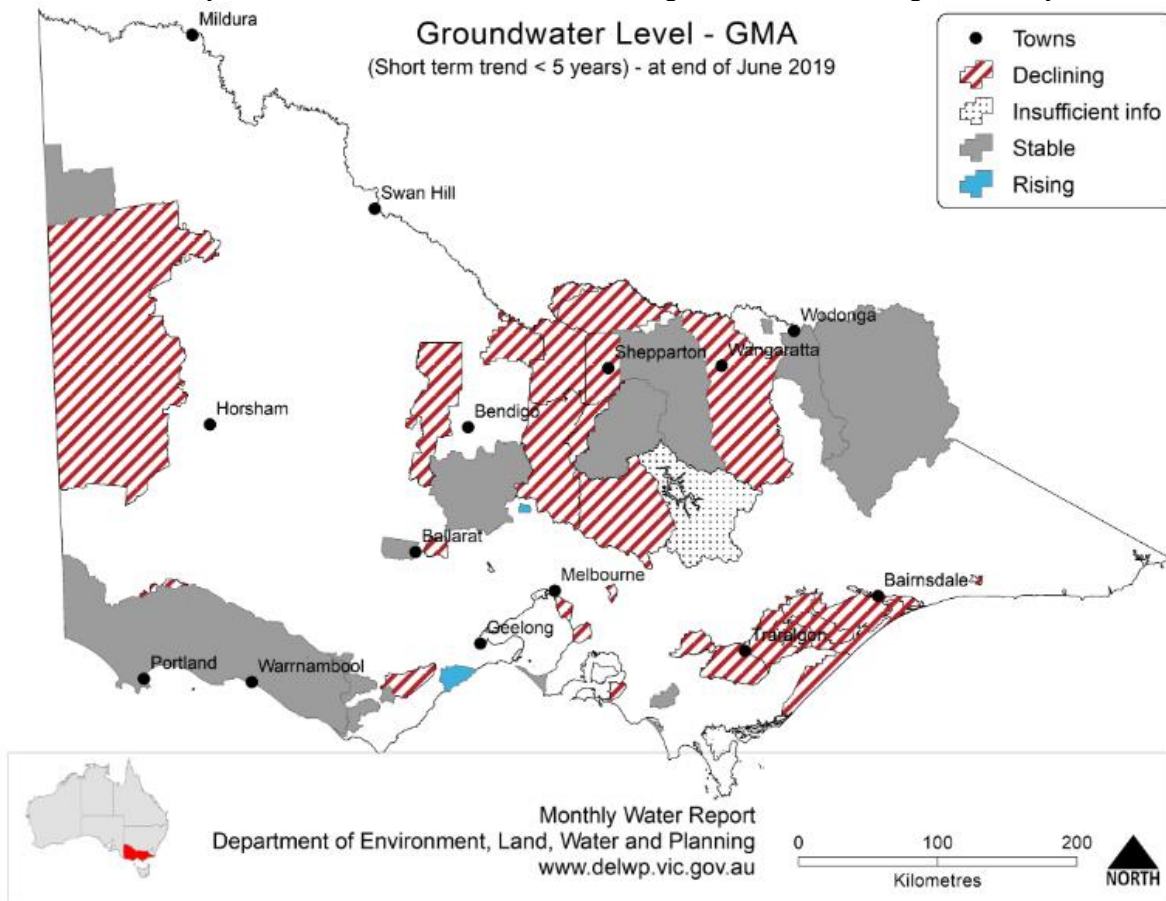
## Overview

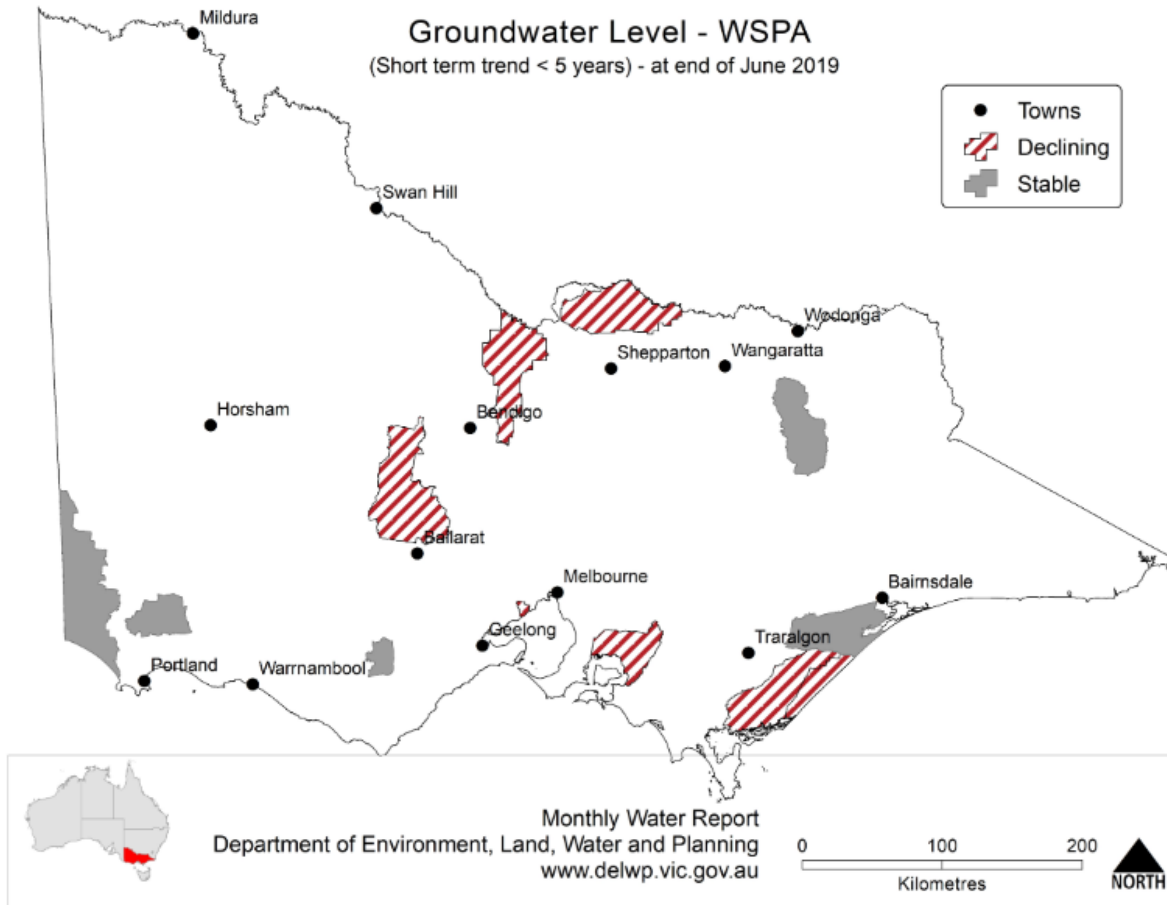
There are five Groundwater Management Units within the South Gippsland basin - Corinella, Giffard, Leongatha, Tarwin and Yarram.

Corinella and Leongatha are basalt aquifers, Tarwin and Giffard are shallow sand aquifers and Yarram is a deep sand aquifer. The South Gippsland basin is generally covered by the sand or basalt aquifers.

The bedrock aquifer rises to the surface on the Strzelecki Ranges, but has limited quality and yield, and is generally only used for domestic and stock purposes.

Follow this [link](#) if you would like to know more about groundwater management in your area

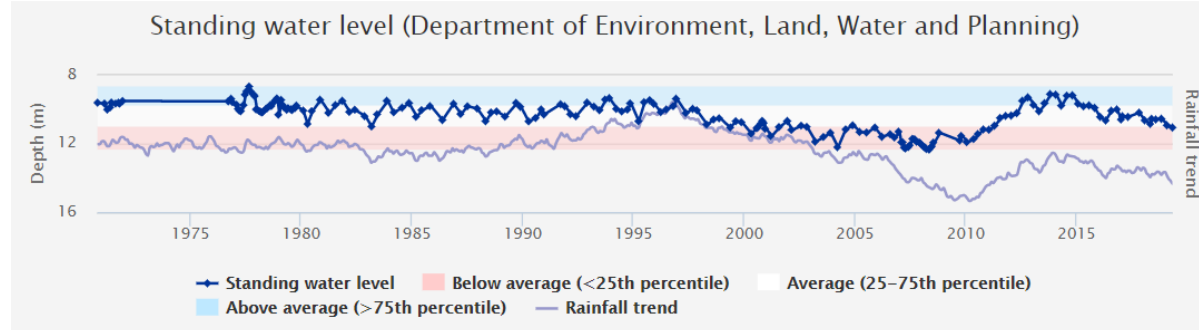




Use this [link](#) to view groundwater trends across Victoria.

### Corinella

Corinella GMA received 656mm of rain at the Rhyll rain gauge station which was approximately 40mm less than the long term average of 695mm. Groundwater usage last year was 63ML compared to the long term average of 65ML. Average water levels this year are within the long term average (within 25-75th percentile)

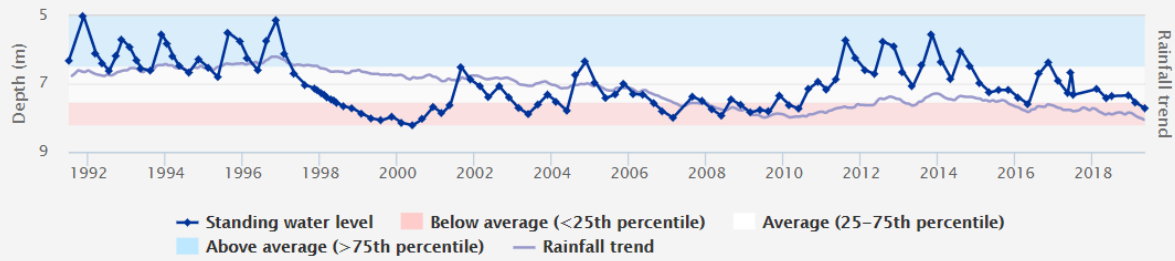


[56922](#) - Stanley Road

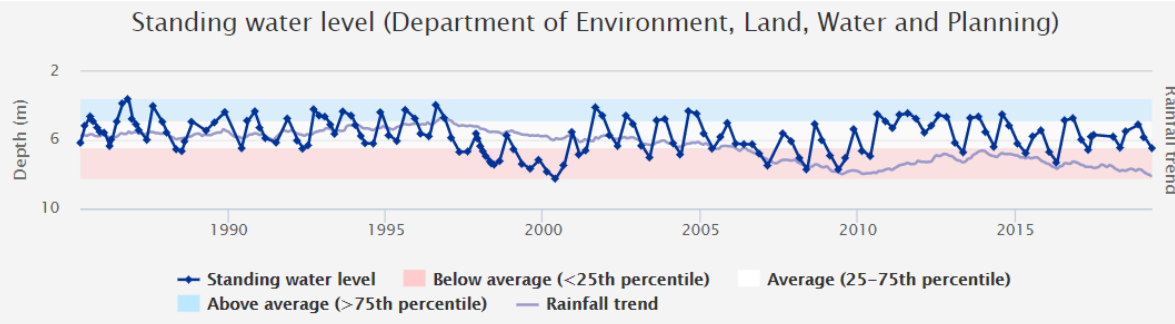
### Leongatha

Leongatha GMA received 1,011mm of rain at the Korumburra rain gauge station which was approximately 200mm less than the long term average of 1,203mm. Groundwater usage last year was 149ML compared to the long term average of 226ML.

Average water levels this year are within the long term average (within 25-75th percentile)  
 Standing water level (Department of Environment, Land, Water and Planning)



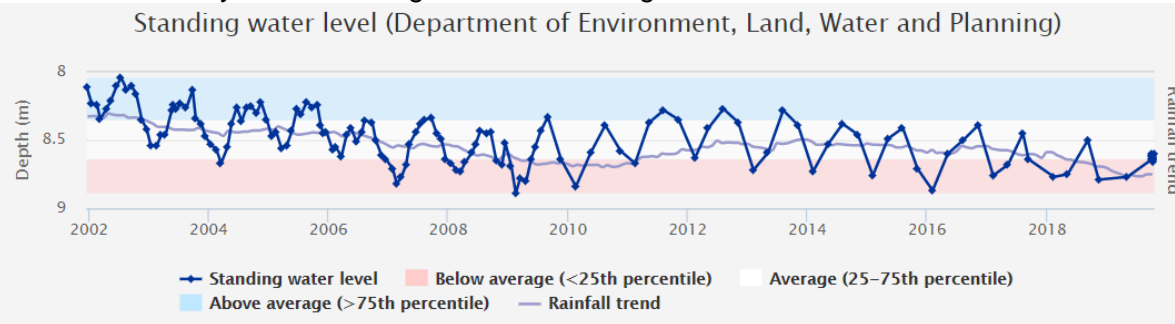
[75565](#) - Old Korumburra Road



[75403](#) - Howards Road

**Giffard**

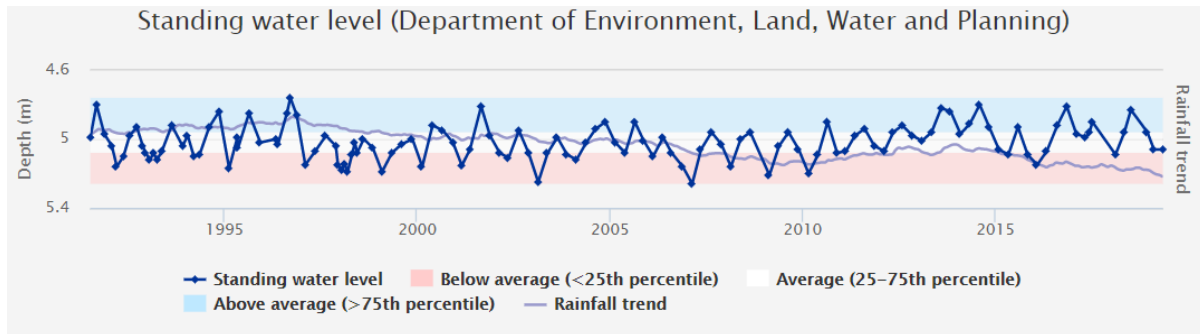
Giffard GMA received 328mm of rain at the Giffard rain gauge station which was approximately 130mm less than the long term average of 563mm. Groundwater usage last year was 5,548ML compared to the long term average of 2,473ML. Water levels this year are average to below average.



[145090](#) – Reeves Beach Road

**Tarwin**

Tarwin GMA received 1,071mm of rain at the Stony Creek rain gauge station which was approximately 100mm above the long term average of 961mm. Groundwater usage last year was 17ML compared to the long term average of 11ML. Average water levels this year are within the long term average (within 25-75th percentile)



[94809](#) – Paris Crescent

## Yarram

The Yarram GMA annual report is available to download [here](#).

To find out more information about the bore depths in your area visit our Groundwater Hub at [www.gwhub.srw.com.au](http://www.gwhub.srw.com.au)

## Groundwater figures

The table below compares last season's usage with the previous four years.

Groundwater system	Number of licences	Licensed volume (ML)	Total Volume Extracted (ML)				
			2018-19	2017-18	2016-17	2015-16	2014-15
Corinella GMA	12	661	63	56	66	72	49
Giffard GMA	16	5,429	5,548	3,784	1,856	2,312	877
Leongatha GMA	33	1,803	149	170	115	206	128
Tarwin GMA	3	57	17	15	5	7	8
Yarram WSPA	83	25,688	16,557	14,075	12,246	14,940	11,309
Unincorporated*	35	1,377	282	217	149	288	143
<b>Total</b>	<b>182</b>	<b>35,015</b>	<b>22,616</b>	<b>18,317</b>	<b>14,437</b>	<b>17,825</b>	<b>12,514</b>

\* within South Gippsland basin

## Water trading

The table below shows the number and volume (ML) of water trades. Temporary and permanent volume trades show water trades across different locations, as distinct from ownership changes that are part of land transfers.

Basin / GMU	Permanent trade		Temporary trade	
	Number	Volume (ML)	Number	Volume (ML)
South Gippsland Basin	1	7	4	52
Giffard GMA	0	0	7	920
Yarram GMA	0	0	10	1386

### More information

For more information about rural water use in your area, please contact your local field officer **Dave Lewis on 0427 885 504** or phone Southern Rural Water on 1300 139 510.

Southern Rural Water is publishing local water reports for all basins. You can view these online at our website ([www.srw.com.au](http://www.srw.com.au))

### ***PLEASE DON'T DRINK OUR WATER***

ANY water from sources managed or licensed by Southern Rural Water, including irrigation storages, channels, rivers and creeks, groundwater and farm dams, is untreated. It should not be considered safe for human consumption without proper treatment.