

# Latrobe Basin – Local Water Report 2019

## Introduction

Welcome to our annual Local Water Report for our Latrobe Basin customers. This report provides information on:

- how our rivers fared last season (2018-19);
- groundwater level trends;
- the number of irrigation licences in each of our systems;
- how much water irrigators used last season compared with previous years; and
- emerging local water issues.

## What happened with your local rivers last season?

Very low rainfall occurred throughout the catchment during the 2018 -2019 season with most rivers being placed on restrictions or bans in early January 2019. Smaller Creeks like the Traralgon and Middle Creek stopped flowing for over four months.

### Morwell River

The Morwell River was the only stream not to go on a complete irrigation ban during the 2018 -2019 season. During early January stage 1 restrictions were implemented and moved to stage 3 and 4 in February. It was rostered through to April where restrictions were lifted.

Stage	Total Days
Stage 1 (100% with rosters)	14
Stage 2 (75% with rosters)	5
Stage 3 (50% with rosters)	28
Stage 4 (25% with rosters)	42

### Middle Creek

Middle Creek was placed on an irrigation ban from late summer through to autumn with very little rain falling in the catchment. The stream ceased flowing during this period.

Stage	Total Days
BAN	120

### Narracan Creek and Little Naracan

Little Narracan and Narracan Creek stream flows were reduced due to low rainfall between January to March. An irrigation roster was activated in late January and was lifted in late April of 2019. During this time conditions were very dry, and rainfall conditions started to improve in May through to November 2019.

Stage	Total Days
Stage 1 Roster	70
Ban	14

## Ten Mile Creek

Once again, due to low rainfall and very dry conditions, Ten Mile Creek was placed on a direct stream irrigation ban from middle of January, and was lifted in the middle April 2019.

Stage	Total Days
BAN	89

## Moe River

The Moe River flows like most streams dropped off in early January . During the season it was placed on an irrigation ban for a total of 57 days.

## Upper Latrobe

The Upper Latrobe was placed on an irrigation ban for a period of 84 days, the first time a ban has been enforced since the 2006 -2007 drought.

## Rosters and restrictions

When river, creek and groundwater levels drop, we often have to introduce rosters, restrictions or bans to ensure a fair distribution of available water to all licence holders.

You can find your area's hotline number and local management rules by visiting [www.srw.com.au/customer/rosters-and-restrictions](http://www.srw.com.au/customer/rosters-and-restrictions)

## River water usage

The table below compares last season's usage with the previous four years:

River system <sup>1</sup>	Number of licences	Licensed volume (ML)	Total Volume Extracted (ML)				
			2018-19	2017-18	2016-17	2015-16	2014-15
Little Narracan	28	1524	1,091	983	937	1,254	859
Moe River	44	1014	578	529	473	788	421
Morwell River System	41	4804	2,109	1,985	1,835	2,500	1,540
Narracan Ck	82	3983	2,747	2,393	2,222	2,684	2,626
Upper Latrobe	43	768	411	291	214	253	177
Latrobe SW	441	13701	142	14	27	43	29
<b>Total<sup>2</sup></b>	<b>679</b>	<b>25,794</b>	<b>7,078</b>	<b>6,195</b>	<b>5,708</b>	<b>7,522</b>	<b>5,652</b>

<sup>1</sup> Does not include farm dam registration licences.

<sup>2</sup> – These figures do not include licences from the Lower Latrobe River which is supported by releases from Blue Rock Dam and are semi-regulated. This approach is consistent with previous years reporting.

# What happened with your local groundwater last season?

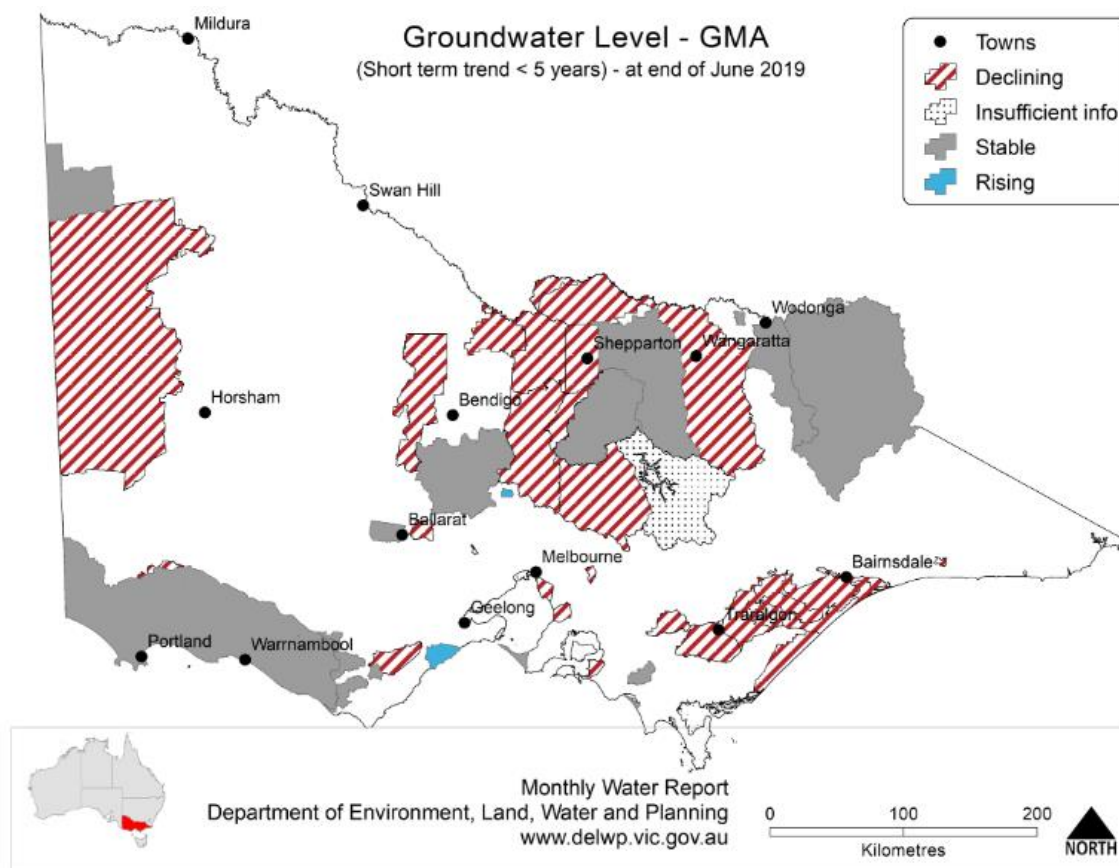
## Overview

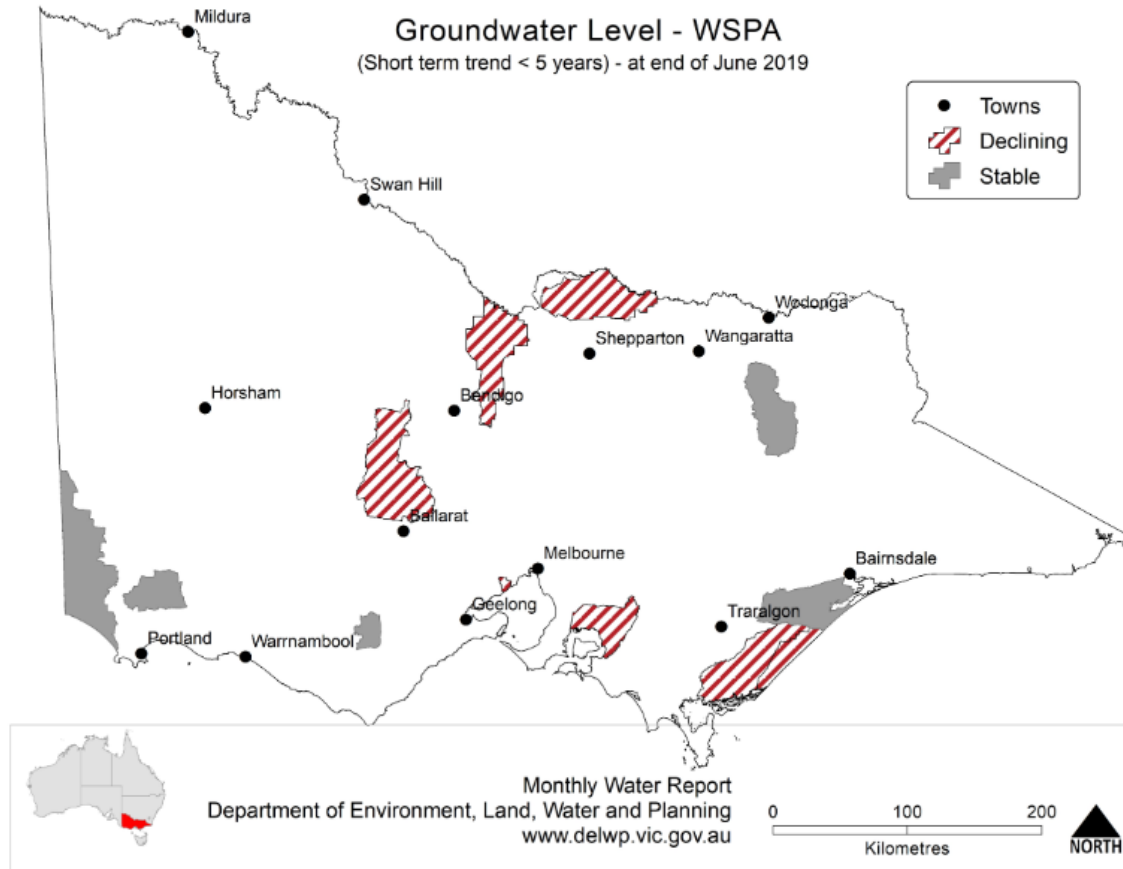
There are four Groundwater Management Units in the Latrobe basin - Denison, Moe, Rosedale and Stratford. The Denison and nearby Sale aquifers are sand aquifers, whereas the Moe aquifer is predominantly basalt. Rosedale and Stratford are deeper sand aquifers.

Many of the sand aquifers contain good quality water and also can be high yielding. A bedrock aquifer covers the highland area of the basin. It has limited quality and yields, and is generally only used for domestic and stock purposes.

The Department of Environment, Land, Water and Planning (DELWP) has State Observation Bore Network coverage in this area.

Follow this [link](#) if you would like to know more about groundwater management in your area.



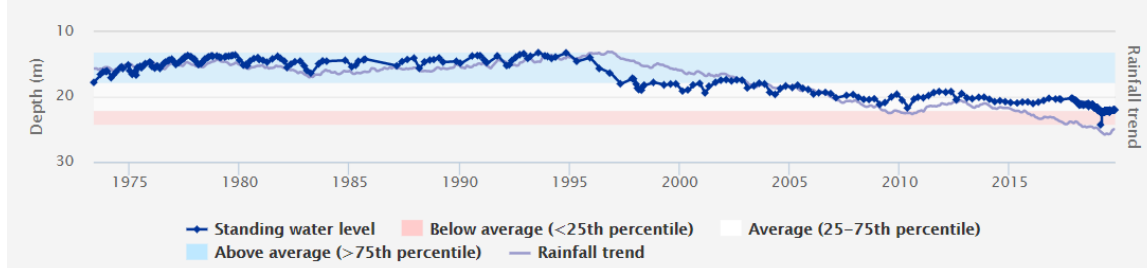


Use this [link](#) to view groundwater trends across Victoria.

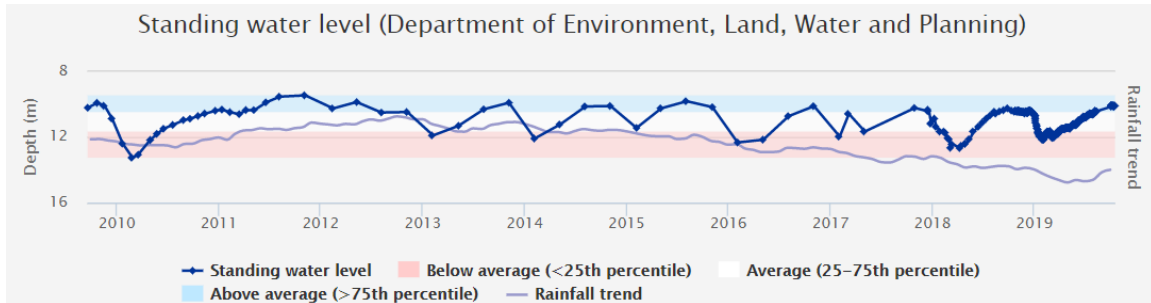
### Moe

Moe GMA received 321mm of rain at the Willow Grove rain gauge station which was approximately 400mm less than the long-term average of 723mm. Groundwater usage last year was 785ML compared to the long-term average of 878ML. Average water levels this year are within the long-term average or below.

Standing water level (Department of Environment, Land, Water and Planning)



[107970](#) - Millers Road Moe



[WRK990055](#) - Willowgrove Road Moe

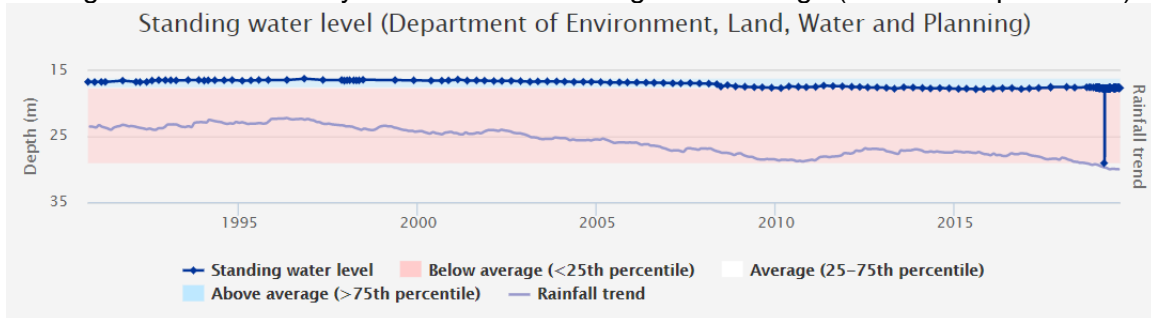
### Denison

Denison GMA received 372mm of rain at the Glenmaggie Weir rain gauge station which was approximately 250mm less than the long-term average of 630mm. Groundwater usage last year was 11,192ML compared to the long-term average of 7,324ML.

### Rosedale

Rosedale GMA received 443mm of rain at the Traralgon EPA rain gauge station which was approximately 170mm less than the long-term average of 613mm. Groundwater usage last year was 9,411ML compared to the long-term average of 6,619ML.

Average water levels this year are below the long-term average (below 25th percentile)

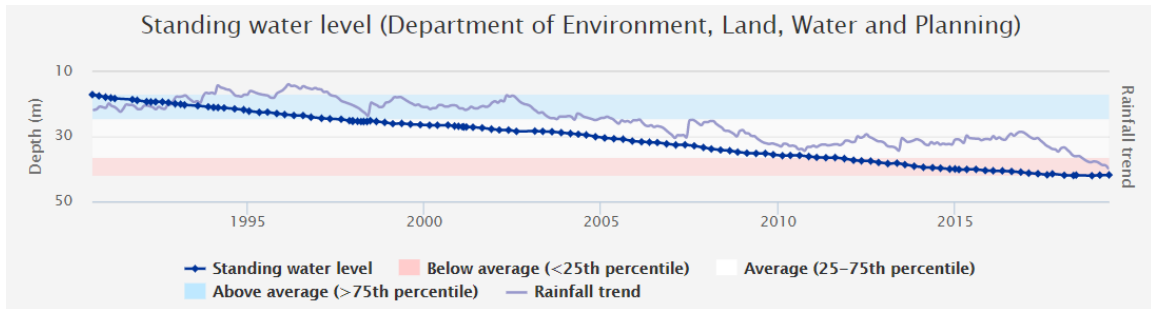


[103811](#) – Bowmans Lane

### Stratford

Stratford GMA received 390mm of rain at the Maffra rain gauge station which was approximately 140mm less than the long-term average of 531mm. Groundwater usage last year was 110ML compared to the 10 year average of 39ML.

Groundwater levels are slowly declining in this deeper aquifer, mainly due to the effects of offshore oil and gas extraction, and also because of Latrobe Valley mine dewatering.



[47063](#) – Romawi Road

To find out more information about the bore depths in your area visit

[https://www.vvg.org.au/vvg\\_map.php](https://www.vvg.org.au/vvg_map.php)

## Groundwater figures

The table below compares last season's usage with the previous years.

Groundwater system	Number of licences	Licensed volume (ML)	Total Volume Extracted (ML)				
			2018-19	2017-18	2016-17	2015-16	2014-15
Moe GMA	93	3,619	785	904	915	1,222	446
Denison <sup>2</sup>	114	13,165	11,191	7,144	6,191	7,048	5,303
Rosedale <sup>1,2</sup>	60	12,726	9,411	7,959	6,713	6,198	5,772
Stratford <sup>1,2</sup>	9	836	110	18	15	22	3
Unincorporated	66	3,048	651	557	259	515	458
<b>Total</b>	<b>342</b>	<b>33,394</b>	<b>1,436</b>	<b>1,461</b>	<b>1,174</b>	<b>1,737</b>	<b>914</b>

1 Excludes entitlements for power generation

2 Partially contained within the Thomson Basin

## Water trading

The table below shows the number and volume (ML) of water trades. Temporary and permanent volume trades show water trades across different locations, as distinct from ownership changes that are part of land transfers.

Previous years water trade ML volumes , numbers and traded price can be found at: <http://waterregister.vic.gov.au/water-trading/take-and-use-licence-trading>

Basin / GMU	Permanent trade		Temporary trade	
	Number	Volume (ML)	Number	Volume (ML)
Moe GMU	3	650	1	30
Denison GMU	3	250	34	2835
Rosedale GMU	5	247	5	210
Stratford GMU	1	41	2	13
Latrobe Basin	10	410.1	90	5680.4

### More information

For more information about rural water use in your area, please contact your local field officers, **Frank Mannuzza** on **0428 356 508** or **Jane Waller** on **0434 601 809**, or contact Southern Rural Water on 1300 139 510.

Southern Rural Water is publishing local water reports for all basins. You can view these online at our website ([www.srw.com.au](http://www.srw.com.au))

### **PLEASE DON'T DRINK OUR WATER**

*ANY water from sources managed or licensed by Southern Rural Water, including irrigation storages, channels, rivers and creeks, groundwater and farm dams, is untreated. It should not be considered safe for human consumption without proper treatment.*