

Hopkins Basin - Local Water Report 2019

Introduction

This is our annual Local Water Report for our Hopkins Basin customers. This report provides information on:

- how our rivers fared last season (2018-19);
- groundwater level trends in key areas;
- the number of irrigation licences in each of our systems;
- how much water irrigators used last season, compared with previous years; and
- emerging local water issues.

What happened with your local rivers last season?

Hopkins River

Below average rainfall was recorded over the winter period with the maximum flow of only 2,198 ML/day, recorded at the Hopkins Falls gauging station in mid-August. The Hopkins River experienced mild restrictions during last season with the maximum level of restriction imposed being stage 3 (50% daily restriction) which was in force for 28 days out of 271 days that the schedule was in place.

Stage	Total Days
Stage 1 (100% on Roster)	177
Stage 2 (75%)	66
Stage 3 (50%)	28
Total	271

Mt Emu Creek

The Mount Emu Creek experienced heavy restrictions over the irrigation season with a total ban on irrigation being imposed for 100 days over the irrigation period.

Winter rainfall leading up to the irrigation season saw a seasonal high flow of only 777 ML/day at the Ayreford Road gauging station in mid-August. This below-average winter flow contributed to the irrigation ban being imposed earlier than normal.

Stage	Total Days
Stage 1 (100% on Roster)	83
Stage 2 (75%)	26
Stage 3 (50%)	23
Stage 4 (25%)	41
Stage 5 (BAN)	100

For more information on the management of the Emu Creek, [click here](#) to read the local management rules.

Merri River

Winter rain was not all that substantial within the Merri River catchment with the maximum daily flow of 1,187 ML/day recorded in mid-August.

The irrigation schedule commenced on 1 October and was only on stage 1 for 6 days when stage 2 (20% reduction in daily allowable) was imposed. This sudden dry start to summer imposed an average long term impact on irrigators while still maintaining the minimum environmental flows at Woodford at all times. The table below are the level of restrictions for the 2018-19 season.

Stage	Total Days
Stage 1 (100% on Roster)	64
Stage 2 (80%)	69
Stage 3 (65%)	5
Stage 4 (50%)	22
Stage 5 (35%)	17
Stage 6 (25%)	12
Stage 6 (17.5%)	0
Stage 6 (10%)	0
Stage 6 (Ban)	0

For more information on the management of the Merri River click here to read the local management rules.

Brucknell Creek (Cudjee Creek)

The Brucknell Creek had strong inflows from groundwater into the system from the South West Limestone aquifer. This inflow helped maintain a constant base flow through the season resulting in No restrictions being imposed on any irrigators throughout the season

Stage	Total Days
Stage 1 (100% on Roster)	260

Rosters and restrictions

When river, creek and groundwater levels drop, we often have to introduce rosters, restrictions or bans to ensure a fair distribution of available water to all licence holders.

You can find your area's hotline number and local management rules by visiting www.srw.com.au/customer/rosters-and-restrictions

River system	Number of licences	Licensed volume (ML)	Total Volume Extracted (ML)				
			2018-19	2017-18	2016-17	2015-16	2014-15
Merri River	52	4802	1,833	1672	1,333	1,569	1248
Hopkins River System	103	6622	632	766	684	889	769
Totals	155	11,424	2,465	2,438	2,017	2,458	2017

The table above compares last season's usage with the previous four years.

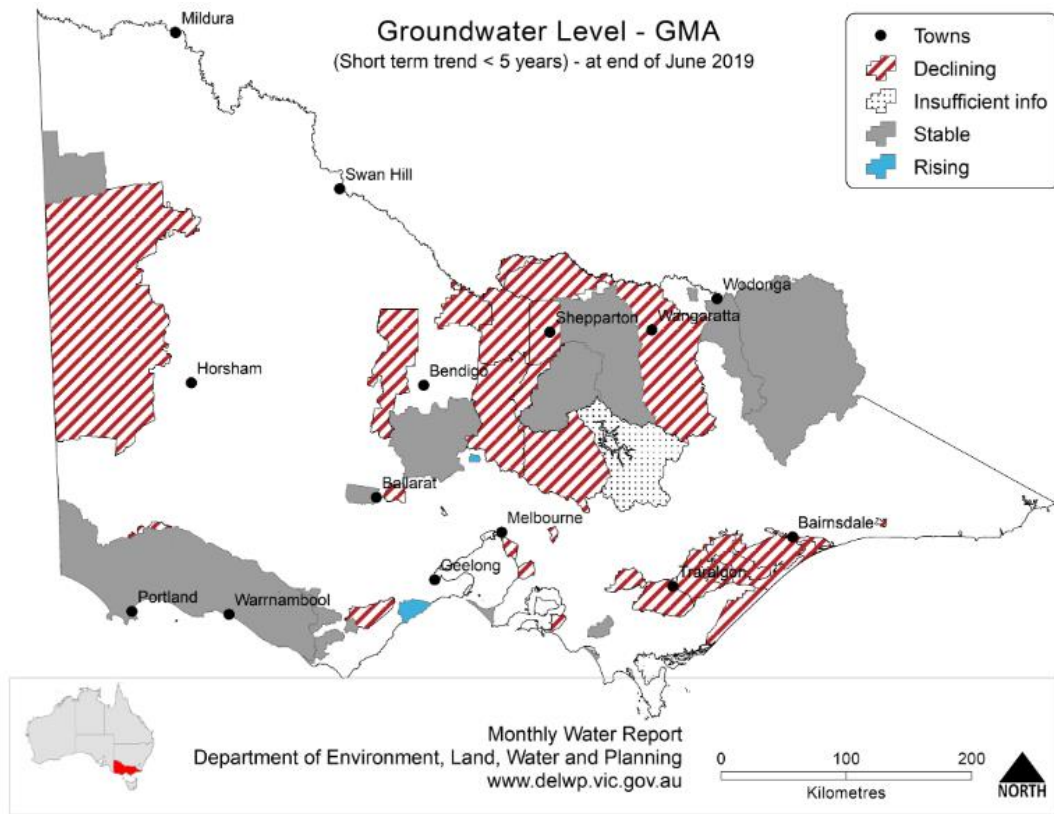
What happened with your local groundwater last season?

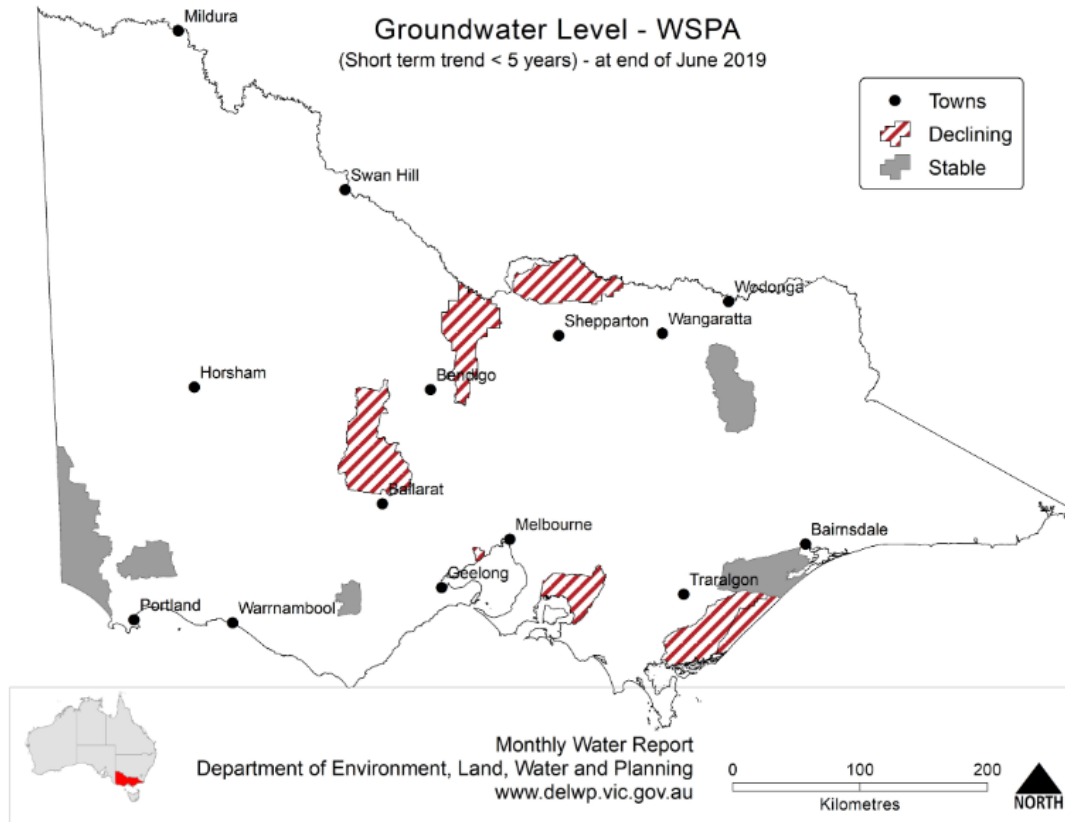
Overview

There are five groundwater management units (GMUs) within the Hopkins Basin – South West Limestone, Glenormiston and Cardigan.

This generally has water of good quality and high yield. The Glenormiston and Cardigan GMUs are basalt aquifers. Other parts of the basin are covered in basalt, and are usually accessed by stock and domestic users as this is a lower yielding aquifer with higher salinity.

Follow this [link](#) if you would like to know more about groundwater management in your area.



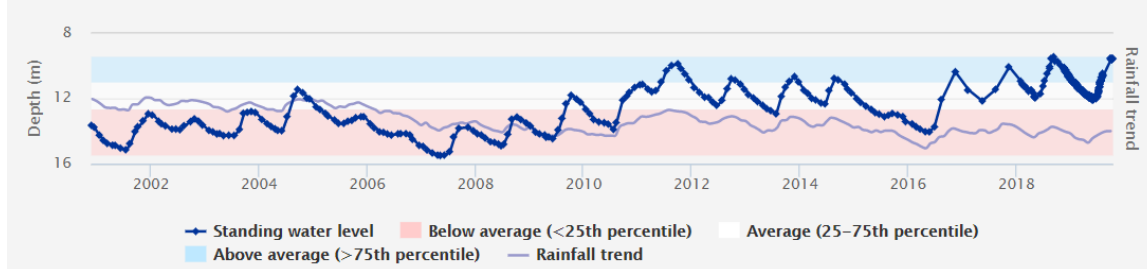


Use this [link](#) to view groundwater trends across Victoria.

South West Limestone

South West Limestone GMA received 883mm of rain at the Nullawarre rain gauge station which was the same as than long term average of 882mm. Groundwater usage last year was 26,099ML compared to the entitlement of 27,411ML. Water levels this year are average to above average. For more information on the management of the South West Limestone click [here](#) to read the Local Management Plan.

Standing water level (Department of Environment, Land, Water and Planning)



[141237](#) - South West Limestone

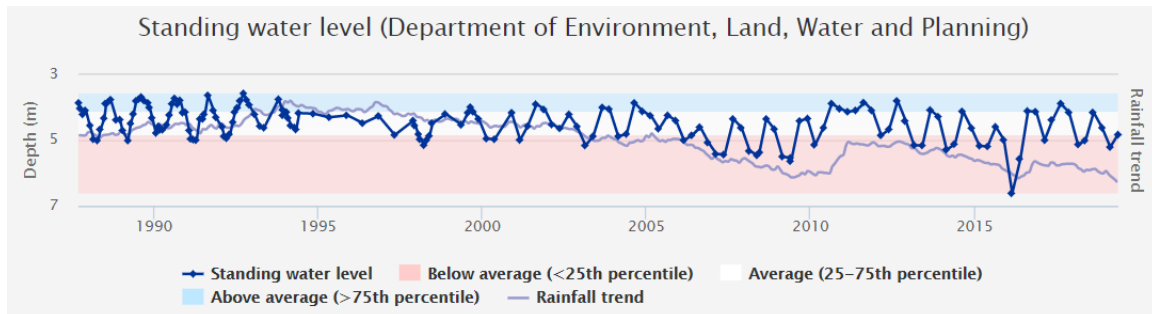
Glenormiston

Glenormiston GMA received 650mm of rain at the Terang rain gauge station which was approximately 130mm less than the long term average of 782mm. Groundwater usage last year was 1,211ML compared to the entitlement of 1,050ML. There are no active monitoring bores within Glenormiston GMA.

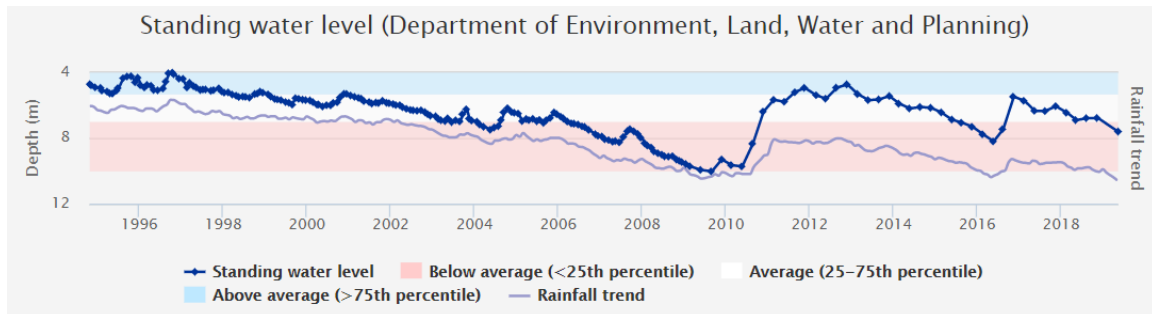
Cardigan

Cardigan GMA received 604mm of rain at the Ballarat Aerodrome rain gauge station which was approximately 80mm less than the long term average of 688mm.

Groundwater usage last year was 931ML compared to the long term average of 673ML. Water levels this year are average to below average.



Cardigan – Racecourse Road ([66622](#))



Cardigan – Draffin's Road ([122382](#))

To find out more information about the bore depths in your area visit https://www.vvg.org.au/vvg_map.php

How much groundwater was used:

Groundwater system	Number of licences	Licence d volume (ML)	Total Volume Extracted (ML)				
			2018-19	2017-18	2016-17	2015-16	2014-15
Cardigan GMU	20	3,887	931	742	751	933	784
Southwest Limestone GMU ^{1,2}	823	80,399	36,253	34,143	25,085	35,360	N/A
Glenormiston GMU	42	2,636	1,211	1,382	1,078	1,148	1,459
Totals³	884	86,922	38,395	36,267	26,914	37,441	2,243

The table above compares last season's usage with the previous four years.

1 Southwest Limestone GMU was introduced in 2015 to replace the Hawkesdale GMA, Heywood GMA, part of the Glenelg GMA and the abolished Nullawarre and Yangery WSPAs. Some entitlements that were recorded as Unincorporated have also been included within the Southwest Limestone GMA.

2 Figures represent the entitlements for the whole of the South West Limestone aquifer

3 Increases in total usage figures reflect the inclusion of the total SWL usage. Balance of unincorporated figures are not included in this total.

Water trading

Basin / GMU	Permanent trade		Temporary trade	
	Number	Volume (ML)	Number	Volume (ML)
Hopkins Basin	0	0	3	166
Cardigan GMA	0	0	0	0
Glenormiston GMA	0	0	0	0
Southwest Limestone GMA ³	8	460.2	24	2764.4

³ All trades within the GMU

The table above shows the number and volume (ML) of water trades. Temporary and permanent volume trades show water trades across different locations, as distinct from ownership changes that are part of land transfers.

Previous years water trade ML volumes, numbers and traded price can be found at: <http://waterregister.vic.gov.au/water-trading/take-and-use-licence-trading>

More information

For more information about rural water use in your area, please contact your local field officer **Gary Wills** on **0418 996 878** or phone Southern Rural Water on 1300 139 510.

PLEASE DON'T DRINK OUR WATER

ANY water from sources managed or licensed by Southern Rural Water, including irrigation storages, channels, rivers and creeks, groundwater and farm dams, is untreated. It should not be considered safe for human consumption without proper treatment.