

# East Gippsland – Local Water Report 2019

## Introduction

Welcome to our annual Local Water Report for East Gippsland Basin customers. This report provides information on:

- how our rivers have fared in the last season (2018-19)
- groundwater level trends
- the number of irrigation licences in each of our systems
- how much water irrigators used last season, with some comparison to previous years
- emerging local water issues

## What happened with your local rivers last season?

Last season water was again very scarce for customers within the East Gippsland Basin. The Tambo upstream from the Little River faced restrictions from 2 January finally lifting 2 May with only a couple of short periods of respite in between. The lower Tambo customers experienced bans which has not occurred since formal rostering began in 2007. Overall usage though was up by more than 30% over previous years.

Although flows were relatively low for the Snowy River, no restrictions were required however some of our customers were affected by the closure of the river mouth. This results in lower land areas becoming inundated with brackish water and can restrict usage below the Princes Highway bridge. The Buchan and Cann Rivers also experienced periods of bans.

### Tambo River - Swifts Creek region

Stage	Total Days
Ban	110

### Tambo River downstream of Ramrod Creek

Stage	Total Days
Stage 1	5
Stage 2	10
Stage 3	2
Stage 4	10
Stage 5	5
Ban	15

### Buchan River

Stage	Total Days
Stage 1	15
Ban	30

## Cann River

Stage	Total Days
BAN	19

## Rosters and restrictions

When river, creek and groundwater levels drop, we often have to introduce rosters, restrictions or bans to ensure a fair distribution of available water to all licence holders.

You can find your area's hotline number and local management rules by visiting [www.srw.com.au/customer/rosters-and-restrictions](http://www.srw.com.au/customer/rosters-and-restrictions)

## Surface water figures

The table below compares last season's usage with the previous four years.

River system	Number of licences <sup>1</sup>	Licensed volume (ML) <sup>1</sup>	Total Volume Extracted (ML)				
			2018 -19	2017-18	2016-17	2015-16	2014-15
Tambo	69	3628	903	633	244	227	71
Snowy	53	3763	1434	869	473	471	242
East Gippsland Basin <sup>2</sup>	10	540	64	49	95	56	27
<b>Total</b>	<b>132</b>	<b>7931</b>	<b>2401</b>	<b>1,551</b>	<b>812</b>	<b>754</b>	<b>340</b>

<sup>1</sup>Does not include farm dam registrations

<sup>2</sup> Includes usage from Cann River, Bemm River, Genoa River

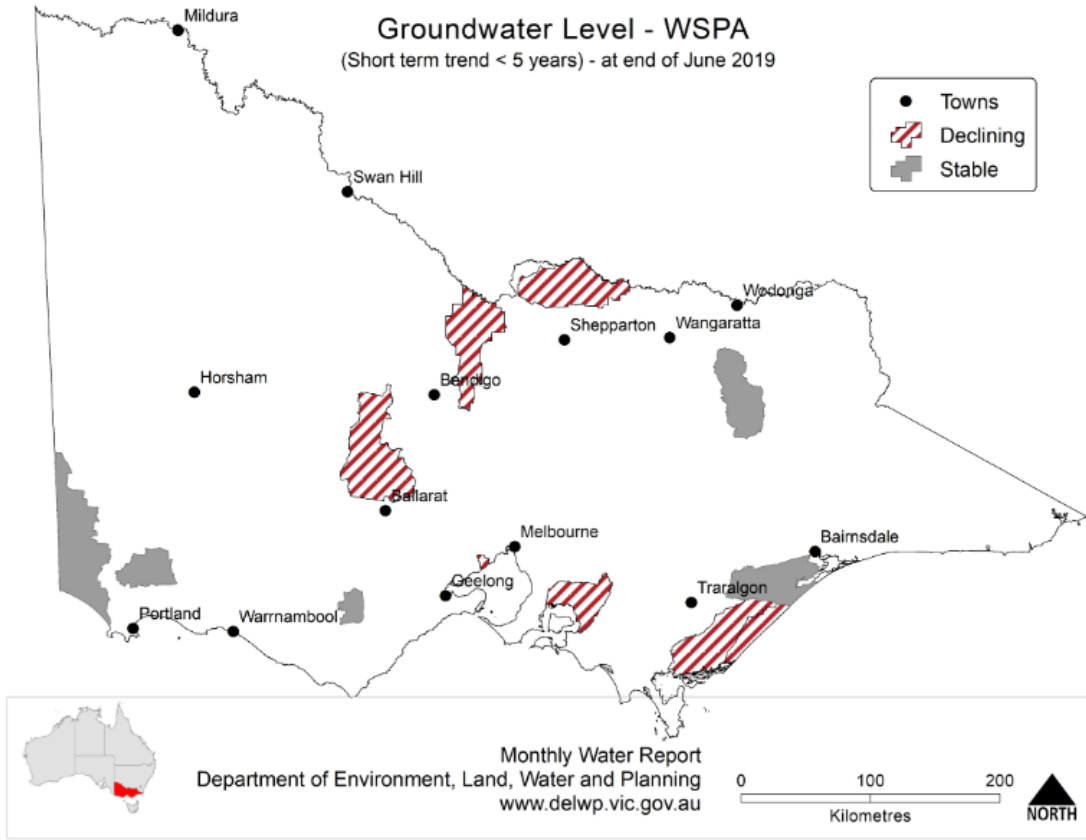
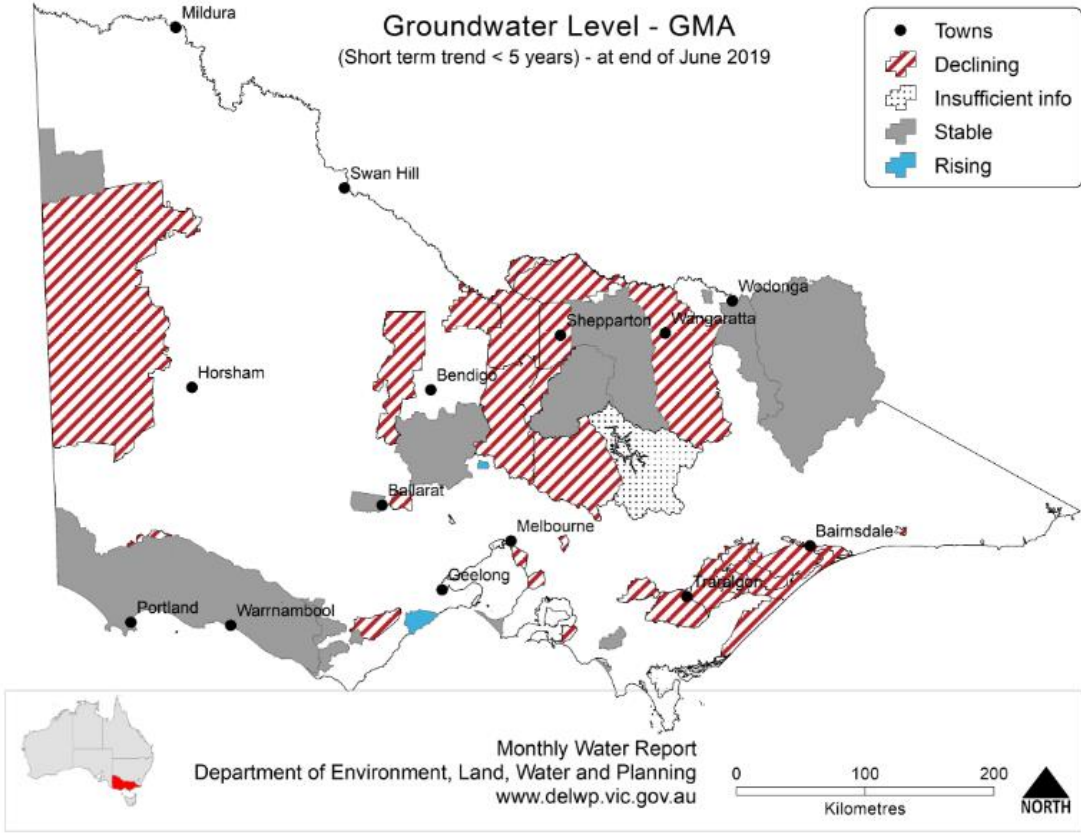
## What's happened with your local groundwater?

### Overview

There are two groundwater management areas within the East Gippsland basin - Orbost and Stratford.

The Orbost aquifer is a thin shallow alluvial deposit that is associated with river valleys, while the Stratford aquifer is a deep sand aquifer. The bedrock aquifer, which covers most of the basin, has limited quality and yields and is generally only used for domestic and stock purposes.

Follow [this link](#) if you would like to know more about groundwater management in your area

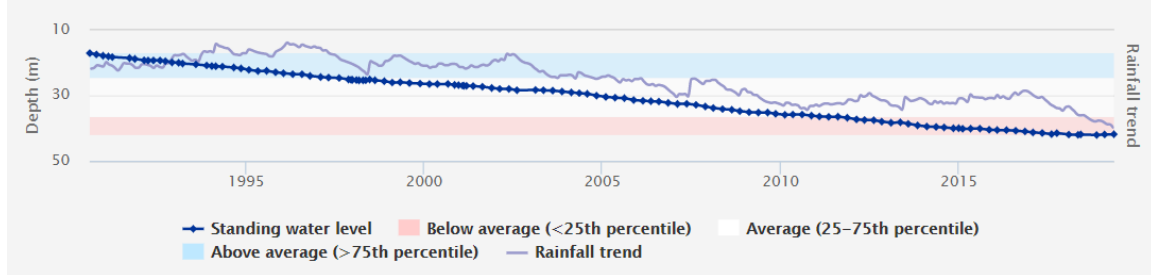


Use [this link](#) to view groundwater trends across Victoria.

## Stratford

Stratford GMA received 390mm of rain at the Maffra rain gauge station which was approximately 140mm less than the long-term average of 531mm. Groundwater usage last year was 110ML compared to the 10 year average of 39ML. Groundwater levels are slowly declining in this deeper aquifer, mainly due to the effects of offshore oil and gas extraction, and also because of Latrobe Valley mine dewatering.

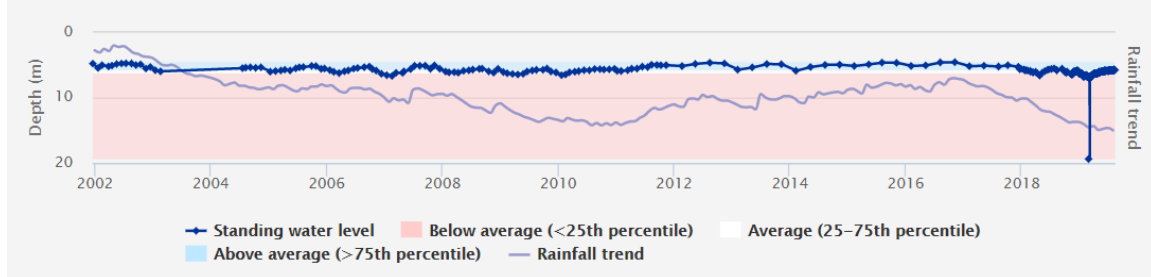
Standing water level (Department of Environment, Land, Water and Planning)



## Orbost

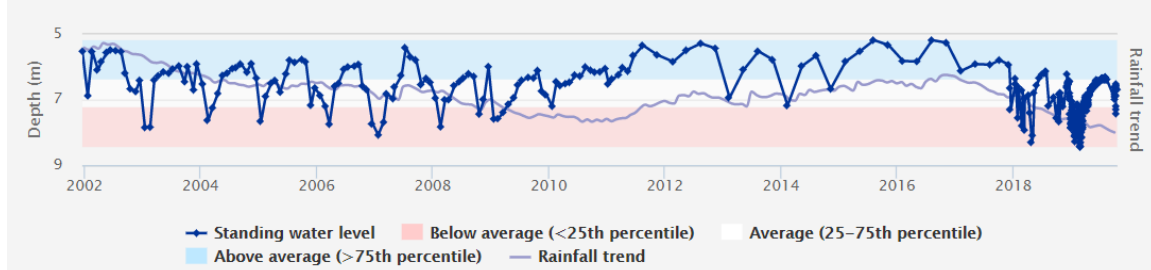
Orbost GMA received 370mm of rain at the Orbost rain gauge station which was approximately 400mm less than the long-term average of 770mm. Groundwater usage last year was 545ML compared to the long-term average of 314ML. Water levels this year are average to below average.

Standing water level (Department of Environment, Land, Water and Planning)



## Buchan/Orbost Road, Orbost ([115732](#))

Standing water level (Department of Environment, Land, Water and Planning)



## Buchan/Orbost Road, Orbost ([144467](#))

To find out more information about the bore depths in your area visit [https://www.vvg.org.au/vvg\\_map.php](https://www.vvg.org.au/vvg_map.php)

## Groundwater figures

The table below compares last season's usage with the previous four years.

Groundwater system	Number of licences	Licensed volume (ML)	Total Volume Extracted (ML)				
			2018 - 19	2017-18	2016-17	2015-16	2014-15
Stratford GMA <sup>1</sup>	9	836	110	18	15	22	3
Orbost GMA	4	1,217	545	537	104	154	150
Unincorporated	29	1,603	1,319	1,176	593	582	391
<b>Totals</b>	<b>42</b>	<b>3,656</b>	<b>1,974</b>	<b>1,731</b>	<b>712</b>	<b>758</b>	<b>544</b>

<sup>1</sup> Does not include power generation licences.

## Water trading

The table below shows the number and volume (ML) of water trades. Temporary and permanent volume trades show water trades across different locations, as distinct from ownership changes that are part of land transfers.

Previous years water trade ML volumes , numbers and traded price can be [found here](#).

Basin / GMU	Permanent trade		Temporary trade	
	Number	Volume (ML)	Number	Volume (ML)
Tambo Basin	4	70	1	50
Snowy Basin	1	17	3	41
East Gippsland Basin	0	0	0	0
Orbost GMA	0	0	0	0
Stratford GMA	1	41	2	13

## More information

For more information about river flows closer to the summer months and rural water use in your area, please contact your local field officer **Nick Krajnc** on **0429 404 751** or phone Southern Rural Water on 1300 139 510.

Southern Rural Water is publishing local water reports for all basins. You can view these online at our website ([www.srw.com.au](http://www.srw.com.au))

### **PLEASE DON'T DRINK OUR WATER**

ANY water from sources managed or licensed by Southern Rural Water, including irrigation storages, channels, rivers and creeks, groundwater and farm dams, is untreated. It should not be considered safe for human consumption without proper treatment.