

Bunyip and Mornington Peninsula Basin – Local Water Report 2019

Introduction

Welcome to our annual Local Water Report for our Bunyip and Mornington Peninsula customers. This report provides information on:

- how our rivers fared last season (2018-19);
- groundwater level trends;
- the number of irrigation licences in each of our systems;
- how much water irrigators used last season, compared with previous years; and
- emerging local water issues.

What happened with your local rivers last season?

Bunyip/Tarago River system

The Bunyip/Tarago system maintained steady flows early in the season, however releases from the Tarago Reservoir were required from January to March to support irrigation demand from the river system.

Lang Lang River/Minnieburn system

The Lang Lang River system also maintained relatively steady flows early in the season before dropping in February and increasing in April. Active irrigators were placed on pumping restrictions during this time.

Other creeks and streams

A majority of the creeks and streams kept reasonable flows throughout the first half of the season. However, drier conditions were experienced during early summer through to the end of the season with lower than usual winter flows.

Drainage

The drainage system in the Koo Wee Rup – Longwarry Flood Protection District is the responsibility of Melbourne Water.

Melbourne Water, along with Cardinia, Casey and Baw Baw Shire Councils and the local community, look after the district's drains and flood protection structures using funds collected through a special rate by South East Water.

Melbourne Water looks after the precept drains and the carrier drains, while council looks after the council-owned drains and the community is responsible for any private drains.

Rosters and restrictions

When river, creek and groundwater levels drop, we often have to introduce rosters, restrictions or bans to ensure a fair distribution of available water to all licence holders.

You can find your area's hotline number and local management rules by visiting www.srw.com.au/customer/rosters-and-restrictions

Surface water figures

The table below compares last season's usage with the previous four years.

River system	Number of licences #	Licensed volume (ML)#	Total Volume Extracted (ML)				
			2018-19	2017-18	2016-17	2015-16	2014-15
Bunyip Tarago	373	7239	2,728	2,149	1,931	2,631	1,923
Lang Lang River	49	1048	449	430	402	431	320
Cardinia Creek	41	745	143	184	181	371	356
Watsons Creek	10	764	303	205	325	196	217
Toomuc Creek	14	219	71	89	93	106	98
Deep Creek	7	150	57	25	42	25	39
Clyde Creek	4	449	261	220	20	41	95
Yallock Creek	41	829	405	419	453	404	307
Dandenong Creek	27	1025	983	828	507	719	429
Main Creek	12	80	44	55	60	45	17
Stony Creek	25	374	20	20	17	20	21
Bunyip Basin Misc	6	107	372	275	314	298	262
Peninsula Basin Misc	64	1653	405	517	530	577	508
Totals	689	14970	6,241	5,416	4,875	5,864	4,592

Does not include farm dam registration licences

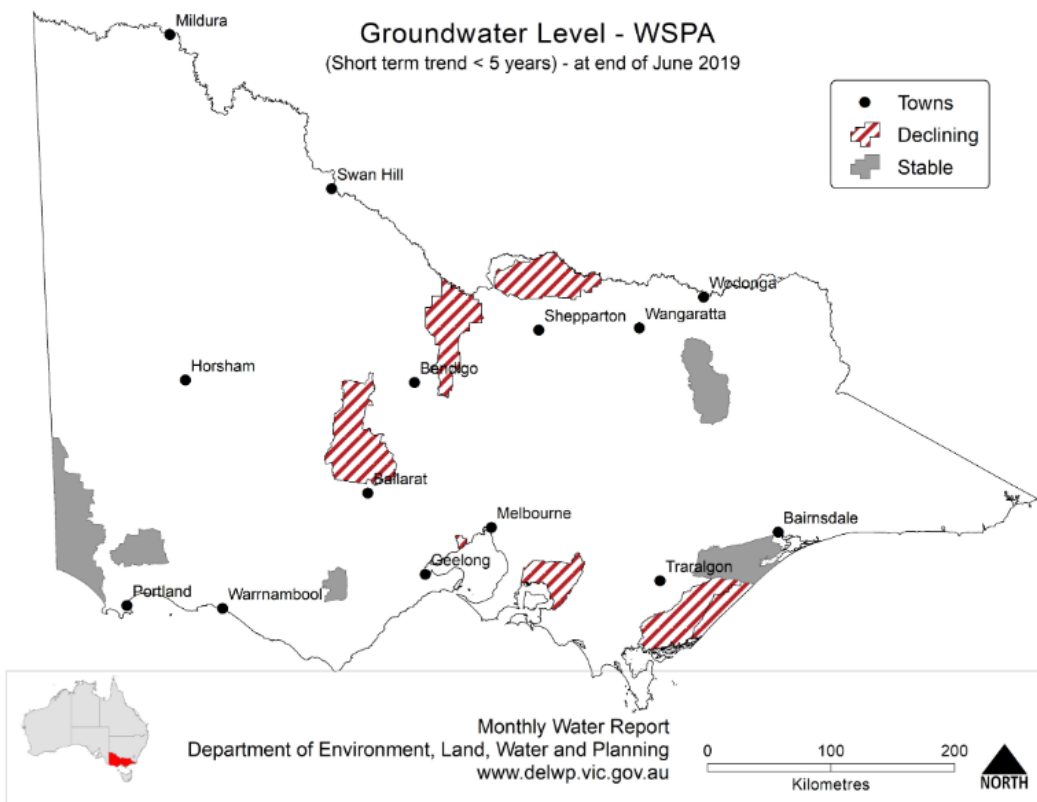
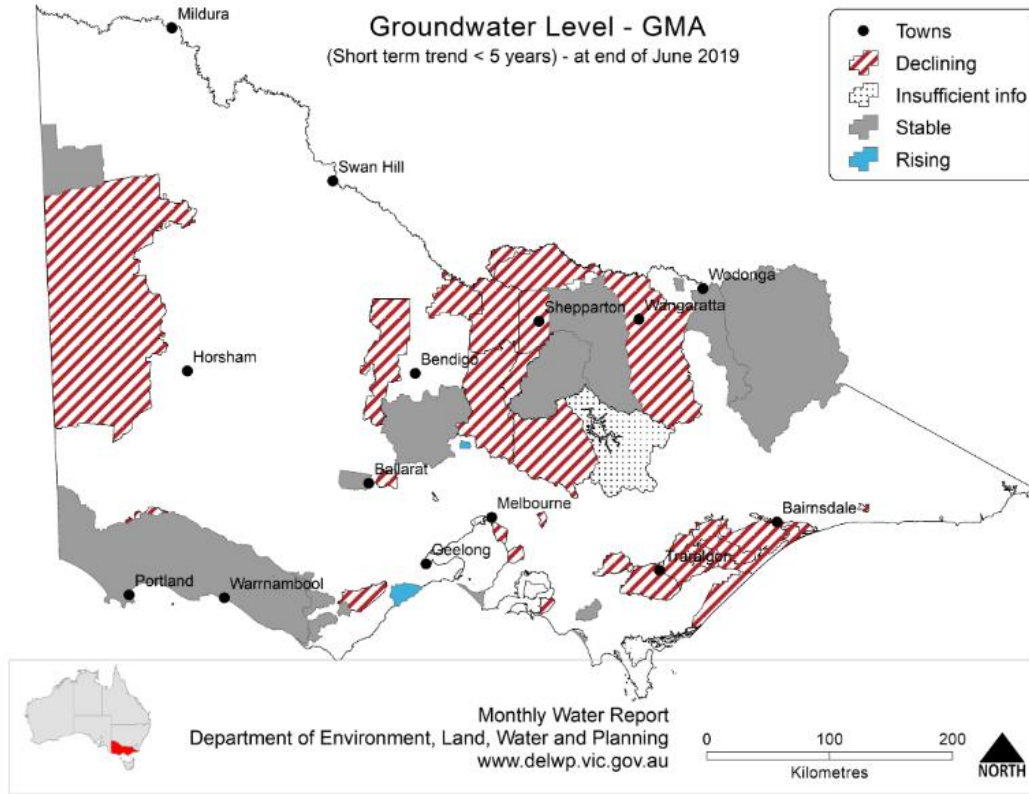
What happened with your local groundwater last season?

Overview

There are four Groundwater Management Units within the Bunyip and Peninsula basin - Frankston, Moorabbin, Nepean and Koo Wee Rup. The main aquifers in Frankston Moorabbin and Nepean are shallow and sandy. In Koo Wee Rup, the main aquifer is deep and confined.

Water quality and yield can vary greatly across the region and groundwater is generally used for irrigation or domestic and stock purposes. The Department of Environment, Land, Water and Planning (DELWP) has limited State Observation Bore Network coverage in Frankston and Moorabbin, but has quite extensive coverage in Nepean and Koo Wee Rup.

Follow this [link](#) if you would like to know more about groundwater management in your area.



Use this [link](#) to view groundwater trends across Victoria.

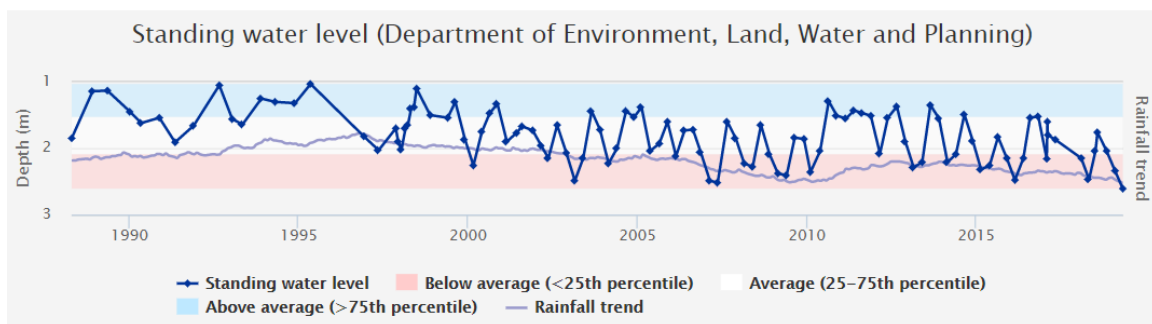
Koo Wee Rup Water Supply Protection Area (WSPA)

The 2018-19 annual report for the Koo Wee Rup Water Supply Protection Area is available to download [here](#).

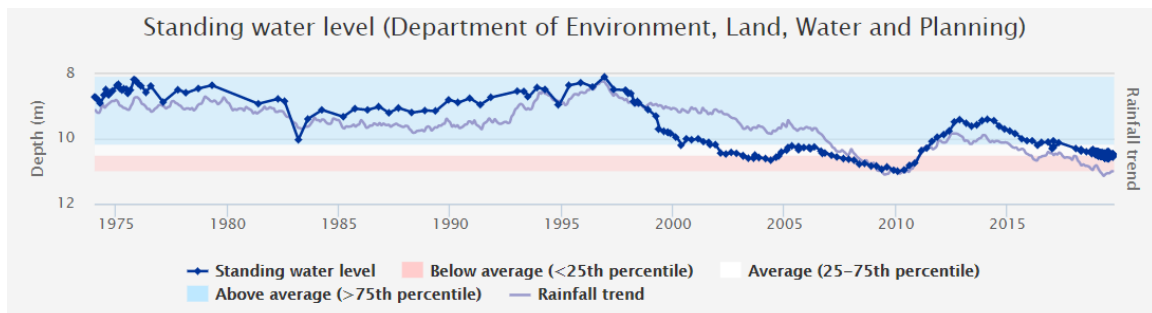
For more information on the management of the Koo Wee Rup Water Supply Protection Area click [here](#) to read the Groundwater Management Plan

Frankston

Frankston GMA received 622mm of rain at the Bonbeach rain gauge station which was approximately 90mm less than the long term average of 708mm. Groundwater usage last year was 183ML compared to the long term average of 171ML. Water levels this year are average to below average.



Frankston – Stevensons Road Road ([76210](#))

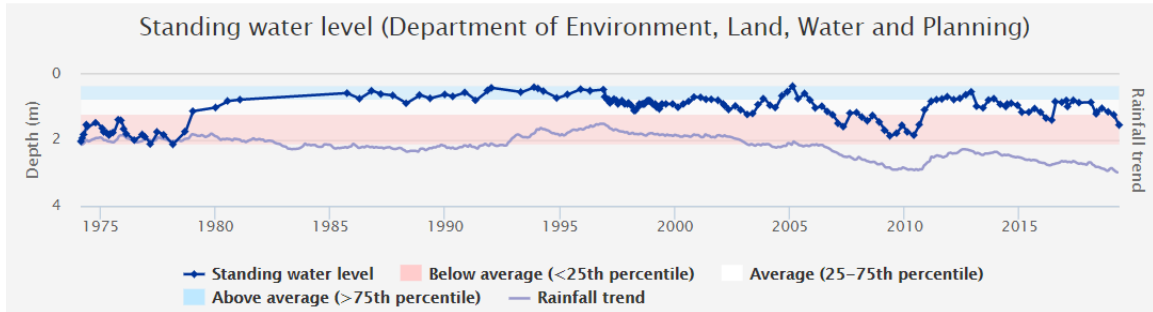


Frankston - Dandenong Hasting Road ([62949](#))

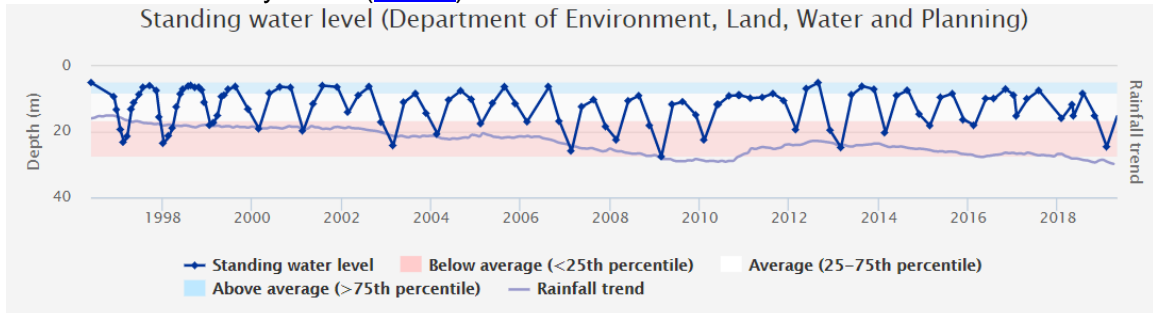
Moorabbin

Moorabbin GMA received 555mm of rain at the Moorabbin Airport rain gauge station which was approximately 150mm less than the long term average of 705mm. Groundwater usage last year was 1,228ML compared to the long term average of 1,151ML.

Water levels this year are average to below average.



Moorabbin – Bunney Road ([81425](#))



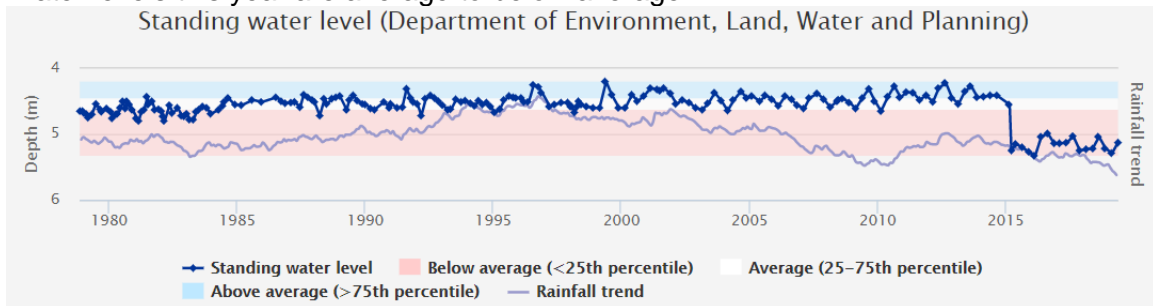
Moorabbin – Farm Road ([127480](#))

Nepean (Morningside Peninsula)

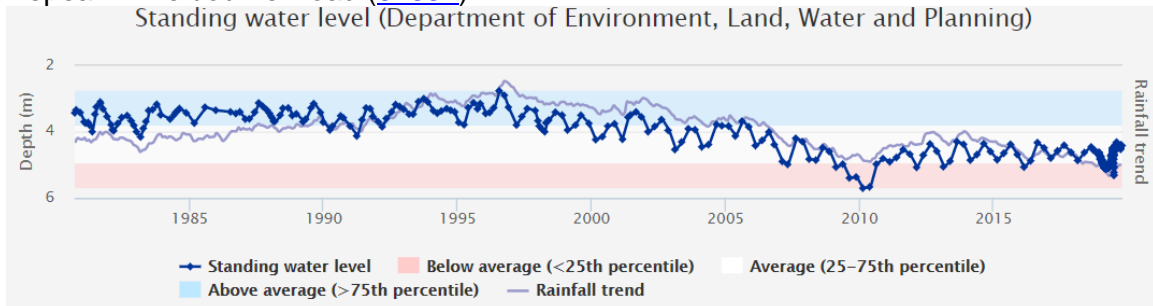
Nepean GMA received 728mm of rain at the Rosebud rain gauge station which was approximately 50mm less than the long term average of 782mm.

Groundwater usage last year was 2,856ML compared to the long term average of 3,002ML.

Water levels this year are average to below average.



Nepean – Melbourne Road ([84884](#))



Nepean – Boneo Road ([100023](#))

To find out more information about the bore depths in your area visit:

https://www.vvg.org.au/vvg_map.php

Groundwater figures

Groundwater system	Number of licences	Licensed volume (ML)	Total Volume Extracted (ML)				
			2018-19	2017-18	2016-17	2015-16	2014-15
Koo Wee Rup WSPA Zone 1	340	12,575	361	385	338	495	257
Koo Wee Rup WSPA Zone 2A			236	210	182	241	208
Koo Wee Rup WSPA Zone 2B			875	682	705	992	920
Koo Wee Rup WSPA Zone 3			2	5	22	20	16
Koo Wee Rup WSPA Zone 4			392	393	346	539	388
Koo Wee Rup WSPA Zone 5			347	217	239	319	278
Koo Wee Rup WSPA Zone 6			27	27	21	34	20
Koo Wee Rup WSPA Zone 7			1,724	1,532	1,650	1,707	1,610
Unincorporated			225	10,317	1,500	991	1,028
Frankston GMA	28	2212	183	119	148	301	50
Moorabbin GMA*	53	2604	1,228	1,212	925	1,293	1,171
Nepean GMA	75	6104	2,856	3,024	2,304	2,961	2,417
Totals	721	33,812	9,731	8,797	7,098	10,336	8,866

The table above compares last season's usage with the previous four years.

*Also included in the Yarra Basin

Water trading for 2018-19

The table below shows the number and volume (ML) of water trades. Temporary and permanent volume trades show water trades across different locations, as distinct from ownership changes that are part of land transfers.

Previous years water trade ML volumes , numbers and traded price can be found at:

<http://waterregister.vic.gov.au/water-trading/take-and-use-licence-trading>

Basin / GMU	Permanent trade		Temporary trade	
	Number	Volume (ML)	Number	Volume (ML)
Koo Wee Rup WSPA	4	112.2	21	8025
Moorabbin GMA	0	0	5	99
Nepean GMA	1	5	6	81
Bunyip Basin	10	243.5	10	361.6

More information

For more information about rural water use in your area, please contact your local field officers: **Frank Crameri on 0427 564 367** or **Mathew Grivas on 0427 317 436** or phone Southern Rural Water on 1300 139 510.

Southern Rural Water is publishing local water reports for all basins. You can view these online at our website (www.srw.com.au)

PLEASE DON'T DRINK OUR WATER

ANY water from sources managed or licensed by Southern Rural Water, including irrigation storages, channels, rivers and creeks, groundwater and farm dams, is untreated. It should not be considered safe for human consumption without proper treatment.