



## How to read water meters

Metering is an important part of water management.

It allows:

- water users to manage their water efficiently
- water to be managed efficiently and flexibly
- water to be shared equitably
- an accurate record of water usage
- improved compliance with licence volumes.

Southern Rural Water reads all meters at least twice per year (between 1 July and 30 June). We encourage you to read your meter regularly to monitor and record your water use.

### **Waterline - [www.srw.com.au/worder/](http://www.srw.com.au/worder/)**

You can now check your usage and enter your own meter reads online using Waterline. Things to note when reading your meter and entering usage online:

- always enter the meter read in megalitres (ML)
- always enter the meter read to one decimal place only - do not round meter reads up or down.

For more information on Waterline contact us on **1300 139 510** or visit **[www.srw.com.au](http://www.srw.com.au)**

### **Example**

A meter reading 123.456 should be entered as 123.4ML; do not enter it as 123.456ML, 123ML or 124.0ML.

### **Maintaining access to meters**

You are responsible for keeping your meter site free from obstruction so that our field officers can easily and safely access the meter for reading or repairs.

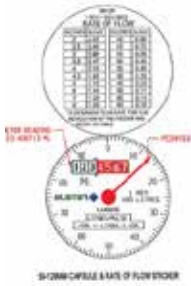
Your meter may be hard to access because of a locked gate, or the area may be overgrown with grass and weeds near the meter site. If we can't get to your meter safely, we will ask you to clean the area and make it accessible.

**It is an offence to tamper with a meter. Please check with SRW before starting any works or upgrades to your meter or pump installation as changes may affect the meter selection.**

R2000 Series



- R2000 meters come in a range of sizes
- the size is shown in millimeters (mm) on the body of the meter.



How to read a 50-125mm R2000

- read the numbers from left to right
- the black numbers are megalitres (ML) and the red numbers are the decimal points
- the example to the left shows a reading of 123.4 ML.



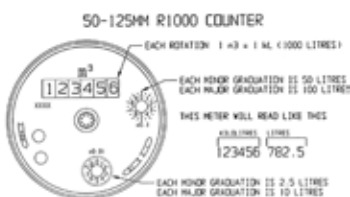
How to read a 150-300mm R2000

- read the numbers from left to right
- the black numbers are megalitres (ML) and the red numbers are the decimal points
- the example to the left shows a reading of 1234.5 ML.

R1000 Series

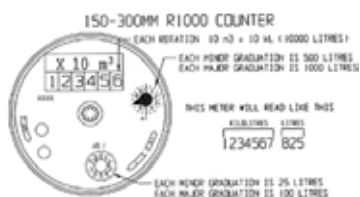


- R1000 meters come in a range of sizes
- the size is shown in millimeters (mm) on the body of the meter.



How to read a 50-125mm R1000

- read the numbers from left to right
- the reading is in cubic meters (m<sup>3</sup>) rather than megalitres, so you will need to divide the number by 1000 to convert to megalitres (ML)
- the above example shows a reading of 123456 m<sup>3</sup>. Divided by 1000, this equals 123.4ML.



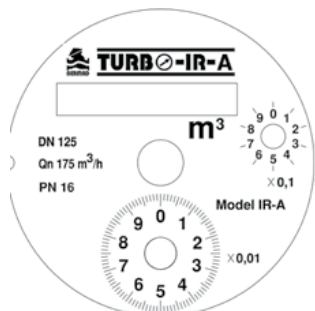
**How to read a 150-300mm R1000**

- read the numbers from left to right
- the reading is in cubic meters x 10 (m<sup>3</sup>x10) rather than megalitres, so you will need to divide the number by 100 to convert to megalitres (ML)
- the above example shows a reading of 123456 m<sup>3</sup>. Divided by 100, this equals 1,234.5ML.

**Bermad Turbo IR Series**

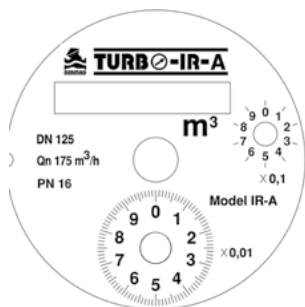


- Turbo IR meters come in a range of sizes
- the size is shown in millimetres (mm) on the body of the meter.



**How to read a 50-125mm Bermad Turbo IR**

- read the numbers from left to right
- the reading is in cubic meters (m<sup>3</sup>) rather than megalitres, so you will need to divide the number by 1000 to convert to megalitres (ML)
- for example, if the reading was showing 123456 m<sup>3</sup>. Divided by 1000, this equals 123.4ML.



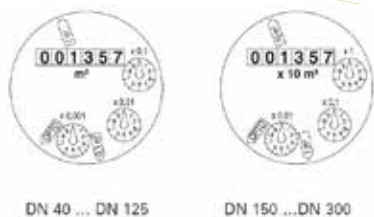
**How to read a 150-300mm Bermad Turbo IR**

- read the numbers from left to right
- the reading is in cubic meters x 10 (m<sup>3</sup>x10) rather than megalitres, so you will need to divide the number by 100 to convert to megalitres (ML)
- the above example, shows a reading of 123456 123456 m<sup>3</sup>. Divided by 100, this equals 1,234.5ML.

**Sensus WP Dynamic Series**



- Sensus WP Dynamic meters come in a range of sizes
- the size is shown in millimetres (mm) on the body of the meter.



**How to read a 40-125mm WP Dynamic**

- read the numbers from left to right
- the reading is in cubic meters (m<sup>3</sup>) rather than megalitres, so you will need to divide the number by 1000 to convert to megalitres (ML). Example, 123456m<sup>3</sup> equals 123.4ML.

**How to read a 150-300mm WP Dynamic**

- read the numbers from left to right
- the reading is in cubic meters X 10 (m<sup>3</sup> X 10) rather than megalitres, so you will need to divide the number by 100 to convert to megalitres (ML). Example, 123456 m<sup>3</sup> x 10 equals 1,234.5ML.

**S2000 Series**



- S2000 meters come in a range of sizes
- the size is shown in millimetres (mm) on the body of the meter.

**How to read an S2000**

- read the numbers from left to right
- the reading is in kilolitres (KL) rather than megalitres, so you will need to divide the number by 1000 to convert to megalitres (ML)
- a meter showing a reading 654321 KL divided by 1000 equals 654.3ML.

**Multi Jet Meters**



- Multi Jet Meters are available in the following sizes:  
 20mm (3/4")  
 25mm (1")  
 30mm (1 1/4")  
 40mm (1 1/2")  
 50mm (2")



**How to read Multi Jet Meter**

- read the numbers from left to right
- the reading is in cubic meters (m<sup>3</sup>) rather than megalitres, so you will need to divide the number by 1000 to convert to megalitres (ML)
- a meter showing a reading 65432 m<sup>3</sup> divided by 1000 equals 65.4ML.