

Recreational facilities

There is no entry fee into Melton Reservoir. Picnic areas cannot be reserved.

All of our recreational facilities including Melton Reservoir have a carry-in carry-out policy, meaning any litter you bring with you must be taken home with you.

Certain activities are prohibited at our reservoirs and recreational areas to protect water quality and the environment. These include stalls and markets, horse riding, abseiling, shooting, archery, paraflying, construction of jetties / pontoons and aircraft landing on the water without written permission.

All native animals and plants are protected by law.

Visitor conduct

For the safety and comfort of all visitors, please:

- consider your fellow guests and keep noise to a minimum
- obey all signs and notices
- comply with directions of SRW officers and security personal
- keep picnic areas and BBQ's clean
- keep within the speed limits
- use toilet facilities provided.

More information

For more information, contact us on **1300 139 510** or visit **www.srw.com.au**

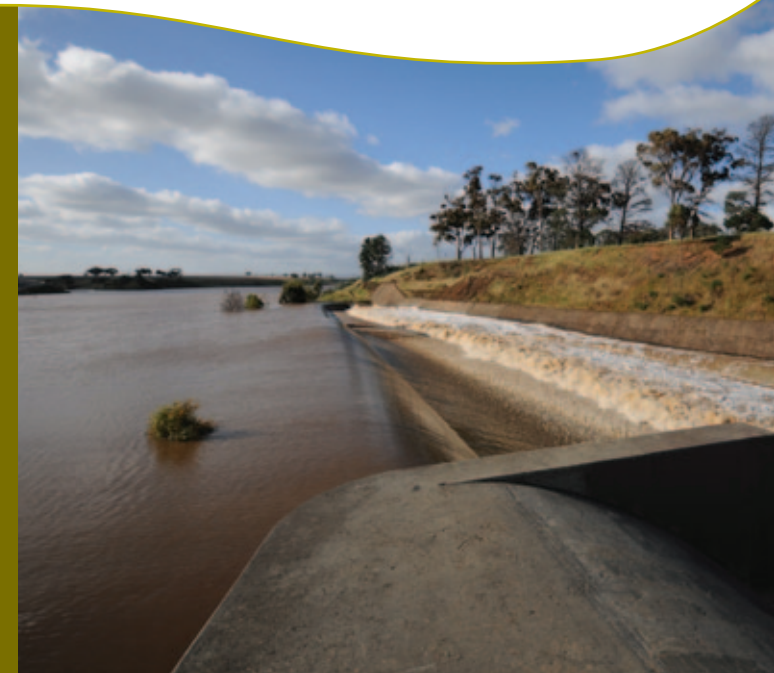
Melton Reservoir

Phone **1300 139 510**
Email **srw@srw.com.au**
Website **www.srw.com.au**

**88 Johnson Street
Maffra 3860**

**1 Tower Road
Werribee 3030**

**132 Fairy Street
Warrnambool 3280**









Melton Reservoir

Southern Rural Water's public recreation area, off Exford Road, is open from 8.30am to 4.30pm daily.

Boating is not permitted upstream of the railway bridge for safety reasons. The water here is shallow and has numerous submerged snags including trees and fencing. Passive recreation, including walking and fishing, is encouraged.

Downstream of the railway bridge, boating is restricted to members of the Melbourne Runabout and Speed Boat Club, which has strict controls to ensure safe boating on such a narrow water body. There is no other boating access in this area because of the steep banks and abutment to private land.

Legend

-  Freeway
-  Road
-  Railway
-  Prohibited access upstream of bridge.
-  Area licensed to Melbourne Runabout and Speed Boat Club. Apply at www.mrsbc.com.au to become a member.
-  Public recreational area is open from 8.30am to 4.30pm daily.



Recreational area facilities

